

SLIDING CLOSER SYSTEM

# NK. SLIDER model CV-series

Suitable for 10Kg to 60Kg door weight

**NSC-C W 60V-22**

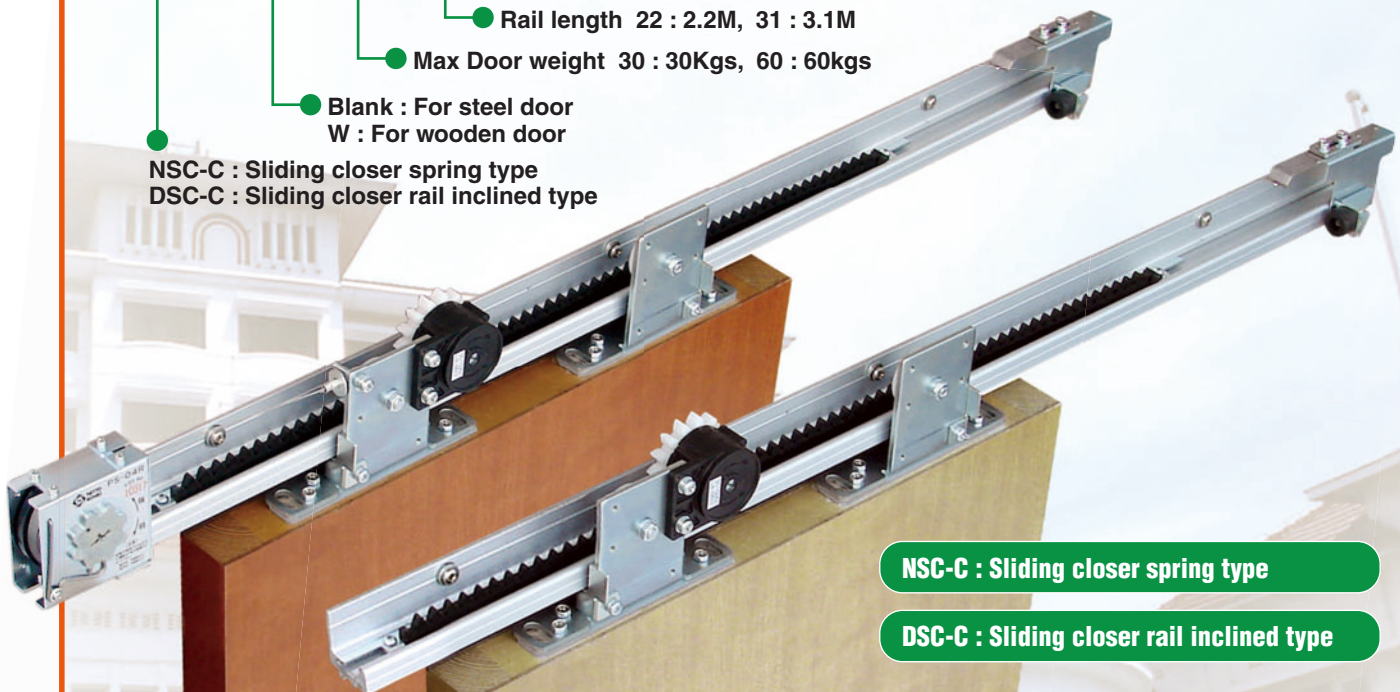
● Rail length 22 : 2.2M, 31 : 3.1M

● Max Door weight 30 : 30Kgs, 60 : 60kgs

● Blank : For steel door  
W : For wooden door

NSC-C : Sliding closer spring type

DSC-C : Sliding closer rail inclined type



**NSC-C : Sliding closer spring type**

**DSC-C : Sliding closer rail inclined type**

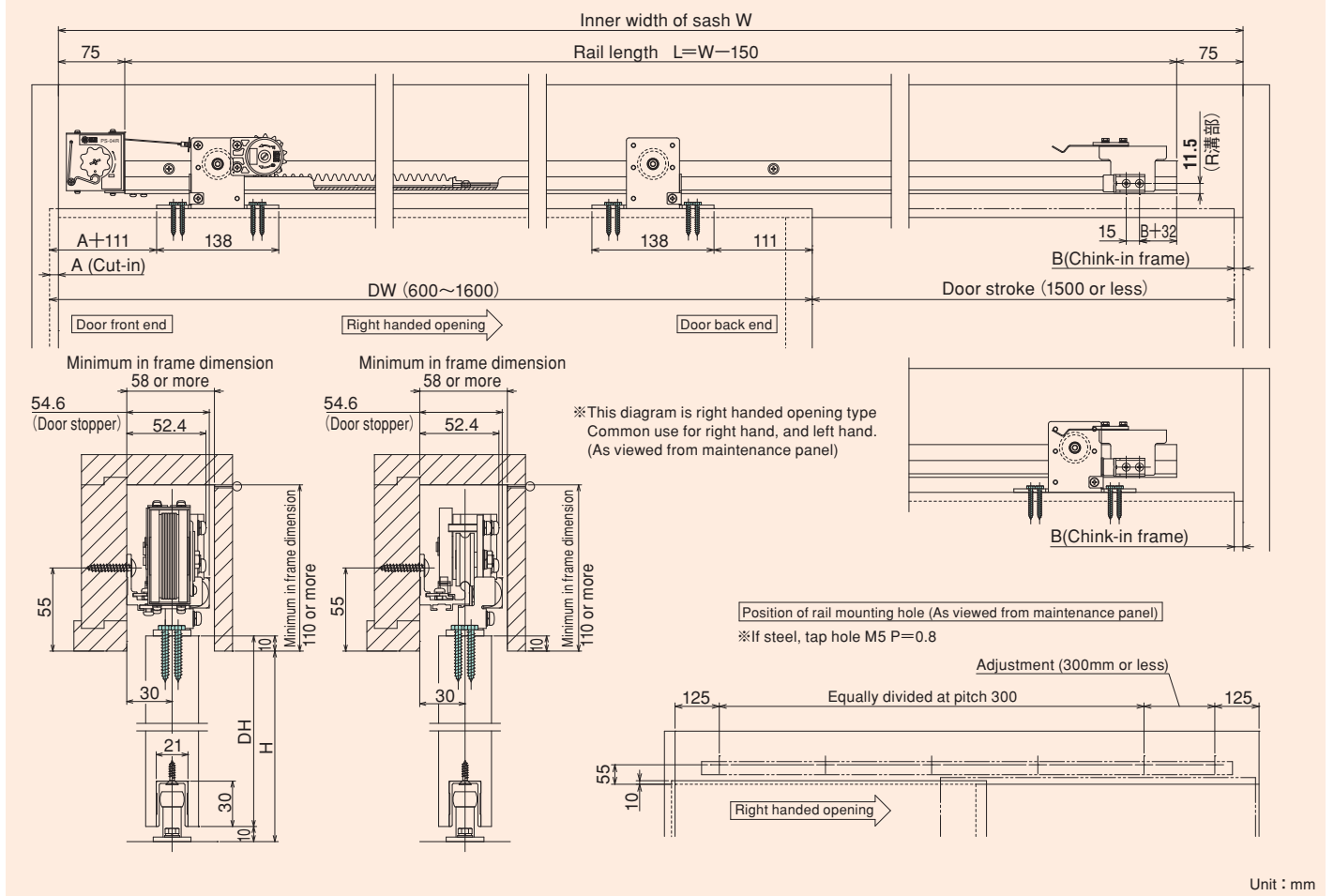
## Feature

- 1 Compact size.  
Minimum in-frame dimension more than 110mm × 58mm (for NSC series), and 130mm × 58mm (for DSC series)
- 2 Easy installation. All work for frame side is drilling screw hole only. You can install by driver only.
- 3 Control rack set is installed at T-groove on Rail.  
This control rack set is replaceable for your easy maintenance (PAT.P).
- 4 Common use for right hand, and left hand.
- 5 Primary door opening torque is very light (Less than 15N).  
Aged people, children, handicapped people can open door easily.
- 6 Brake is fluid friction mechanism. One way clutch achieved accurate, small, and long product life.

## Specification

Model		Rail inclined type				Spring type	
		DSC-C30V-22 DSC-CW30V-22	DSC-C30V-31 DSC-CW30V-31	DSC-C60V-22 DSC-CW60V-22	DSC-C60V-31 DSC-CW60V-31	NSC-C60V-22 NSC-CW60V-22	NSC-C60V-31 NSC-CW60V-31
Applicable Door	Weight	10~30kg		30~60kg		10~60kg	
	Width	600-1,200mm	1,200-1,600mm	600-1,200mm	1,200-1,600mm	600-1,200mm	1,200-1,600mm
Max stroke		Less than 1500mm					
Brake unit		SC-C03V		SC-C06V		SC-C06V	
Spring type		—				PS-04	
Minimum in frame dimension		130mm (H) × 58mm (D)				110mm (H) × 58mm (D)	
Rail length		2.2M	3.1M	2.2M	3.1M	2.2M	3.1M
Closing drive system		Rail inclination (3.5/300)				Spiral spring	
Controlling system		Fluid friction resistance type					
Closing direction		Common					
Initial opening force		Less than 15N					
Endurance		500,000 times open/close					

## Installation diagrams NSC-CW60V



★ Specifications and designs are subject to change at any time without notice.



**Head Office**  
9-4, Nakaikagami 2-chome,  
Ohta-ku, Tokyo 146-8555 Japan  
Phone : +81-3-3755-1111 Fax : +81-3-3753-8791

- ▶ URL : [www.nitto-kohki.co.jp/e](http://www.nitto-kohki.co.jp/e)
- ▶ E-mail : [overseas@nitto-kohki.co.jp](mailto:overseas@nitto-kohki.co.jp)

DISTRIBUTED BY