

■ Outside



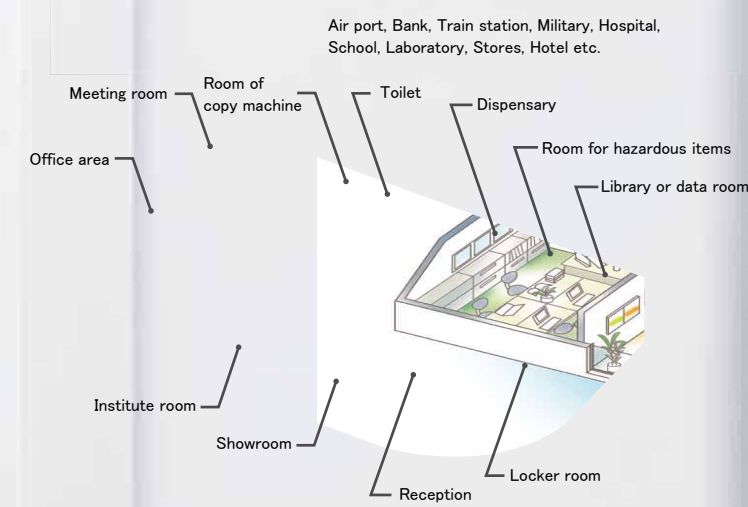
Protection cover is closed.



Protection cover is opened

Suitable places of installation

- Public & Commerce**
- Possible to control numerous passengers' incoming & outgoing.
 - Keeps locked condition by auto lock system.
 - No need to get spare key.
 - No extra cost is required to maintain security.

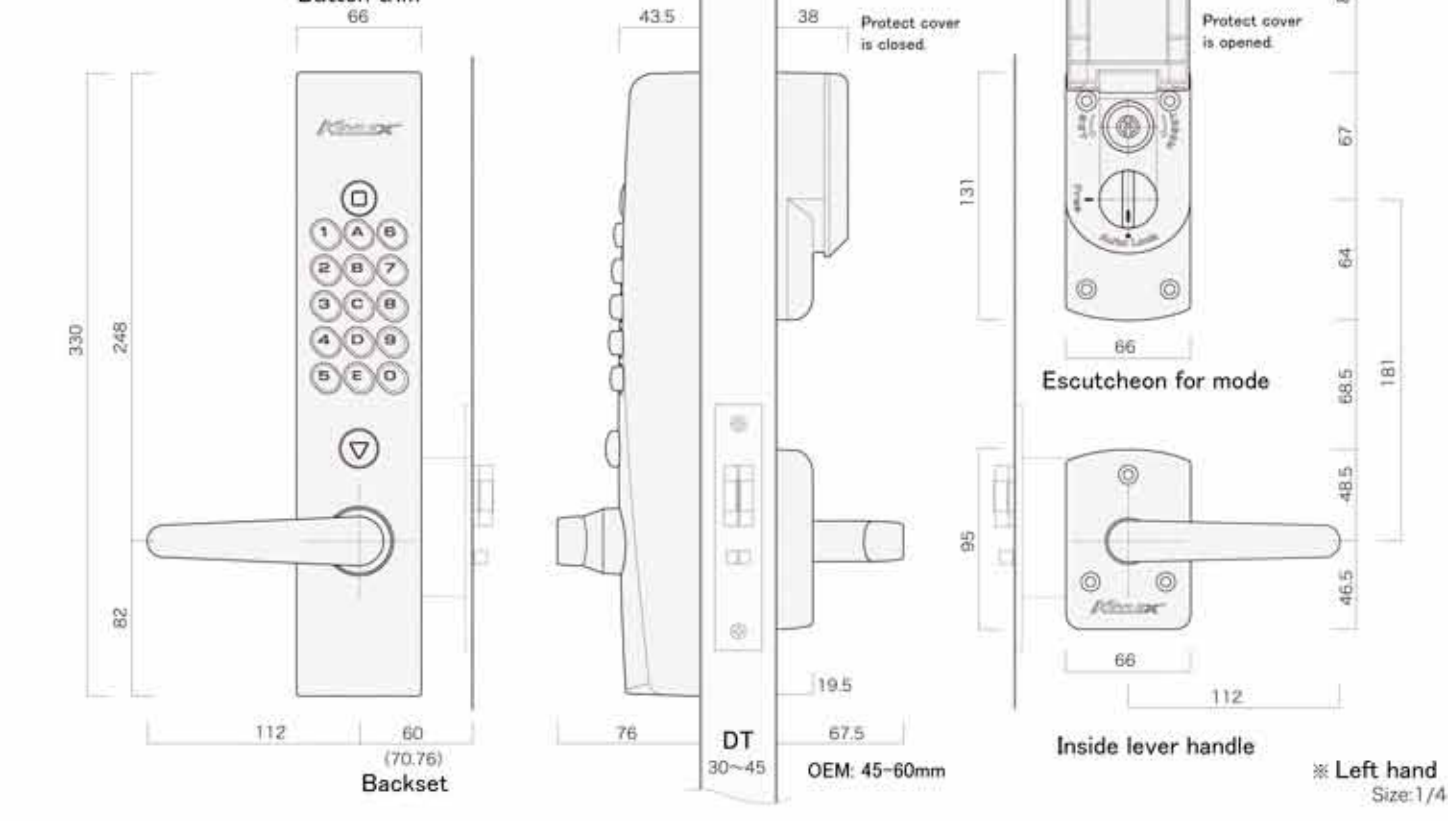


- Apartment for rent
Dormitory**
- Comfortable and safe facility can be appealed to resident.
 - No need to change cylinder everytime new resident comes.

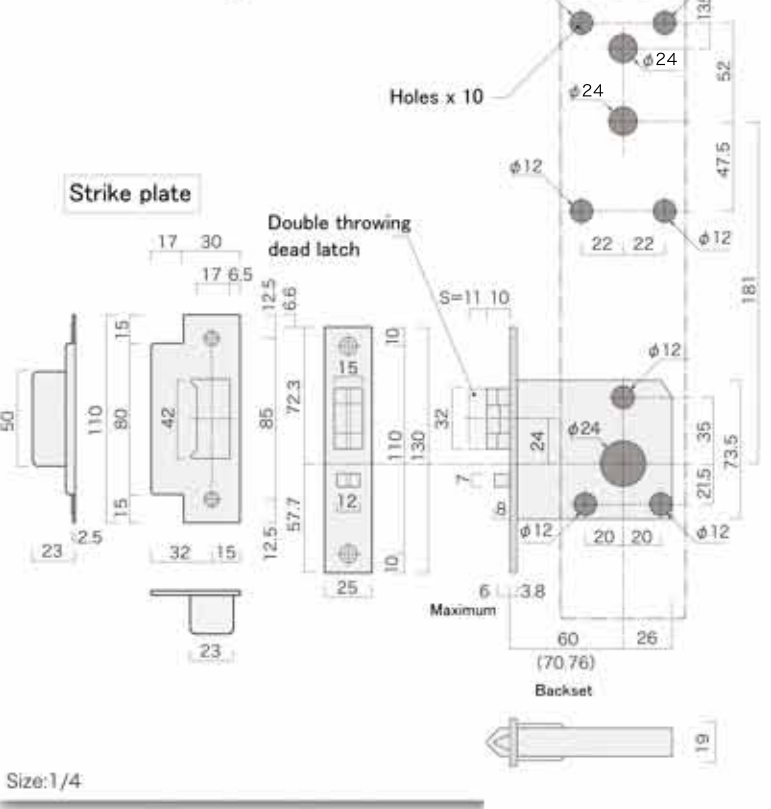
- Residence**
- Save your absent minded from locking.
 - Gives visual deterrent effect against burglar attack or entry.

■ Drawing

Auto lock & Cylinder switch type
Article: K423C



■ Lock drawing and Notch



Size: 1/4

■ Variation

Article	Article No.	Finish
Auto lock & plug swich type	K423P	AS, AB
		WB
Auto lock & cylinder switch type	K423C	AS, AB
		WB
Auto lock with key, cylinder switch type	K423CM	AS, AB
		WB
Auto lock with dead lock, cylinder switch type	K423CD	AS, AB
		WB
Auto lock with key, plug switch type (Made to order)	K423PM	AS, AB
		WB
Auto lock with dead lock, plug switch type (Made to order)	K423PD	AS, AB
		WB

- Available both side button trim.
- Adaptable below cylinders.
 1. MIWA LA cylinder*
 2. GOAL LX cylinder
 3. HORI T-1d cylinder
- * Unadaptable MIWA disc cylinder
- Gross Weight: 4.5 kgs. (K423CM)

ISO 9001,14001
株式会社長沢製作所
NAGASAWA MANUFACTURING CO.,LTD.
<http://www.nagasawa-mfg.co.jp>



KEYLEX[®] 4000 Prime

Entirely mechanical key-less lock

COOL & TOUGHNESS

New Concept & Design



■ FEATURES OF KEYLEX 4000

No electrical work

KEYLEX does not use electricity, so no electrical wiring is required and electrical problems such as power failure, flat batteries, and electrical malfunction can be avoided.

Quick to change code

Changeable the code without taking off lock body from a door.

High visibility and durability buttons

Buttons are made of ZDC.

Fail safe mechanism

Even if the latch bolt is broken, latching function works for a while by support plate. Then it informs necessary timing to replace with red marks indication.

Anti-panic function

An anti-panic function allows the door to be opened with just one action.

High security and weather proof

Lever handle is equipped with slipping clutch mechanism to avoid damage and nullifies forced attack or vandalism from outside. Buttons are designed so that the set code can not be identified even after many years of use. And a body is designed to keep durability in severe circumstances.

Changeover to free passage

A free passage function can be enabled when using the door frequently.

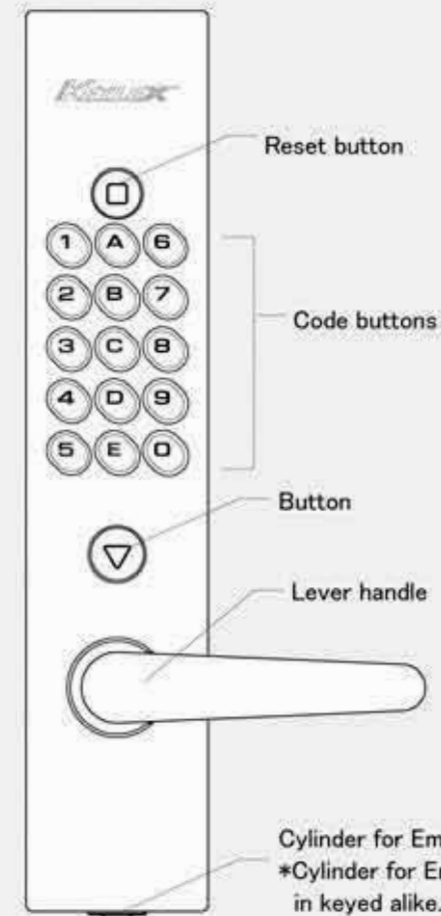


*Cylinder type: 2 pcs of key are attached. (K423P has not keys because of no cylinder.)

Button trim

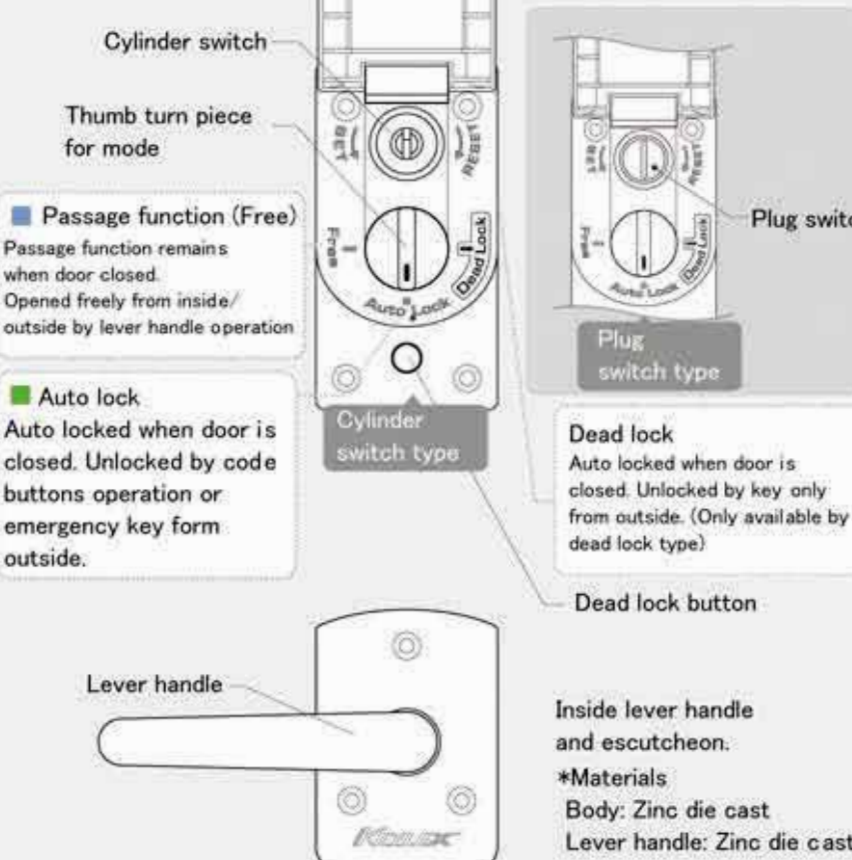
■ Exterior

*Materials
Lock body: Aluminium die cast
Button: Zinc die cast
Lever handle: Zinc die cast



■ Interior

*Materials
Body: Zinc die cast
Cover: ABS resin



Dead lock
Auto locked when door is closed. Unlocked by key only from outside. (Only available by dead lock type)

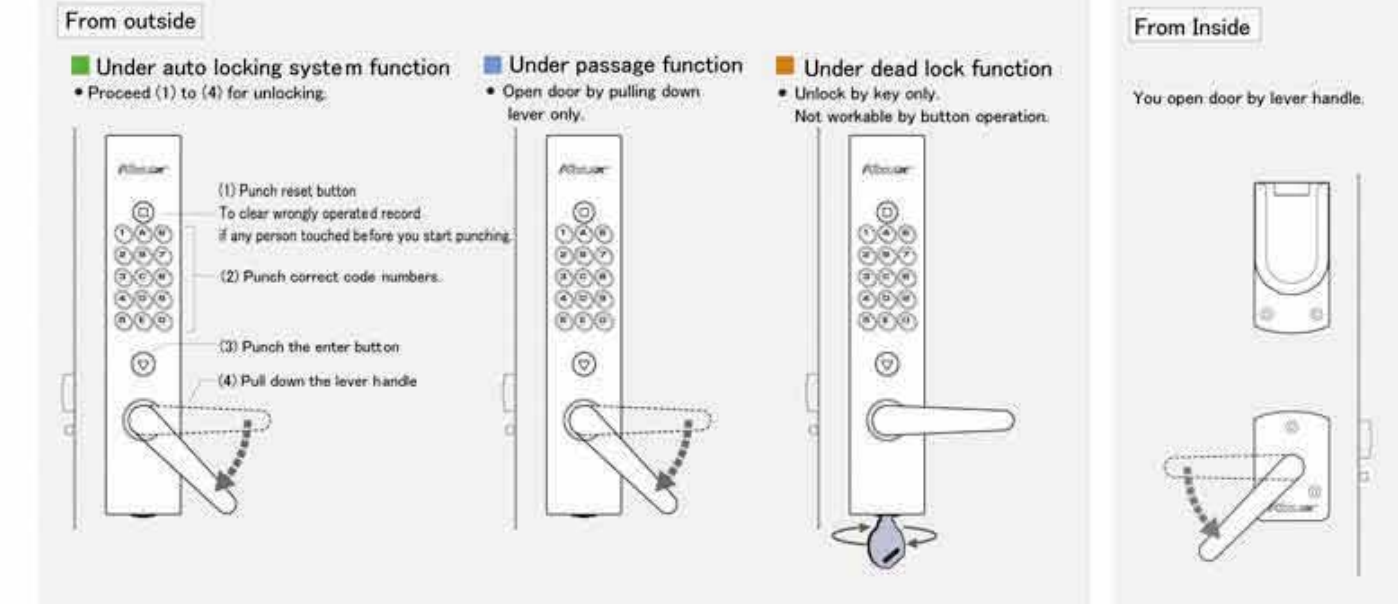
Dead lock button

Inside lever handle and escutcheon.
*Materials
Body: Zinc die cast
Lever handle: Zinc die cast

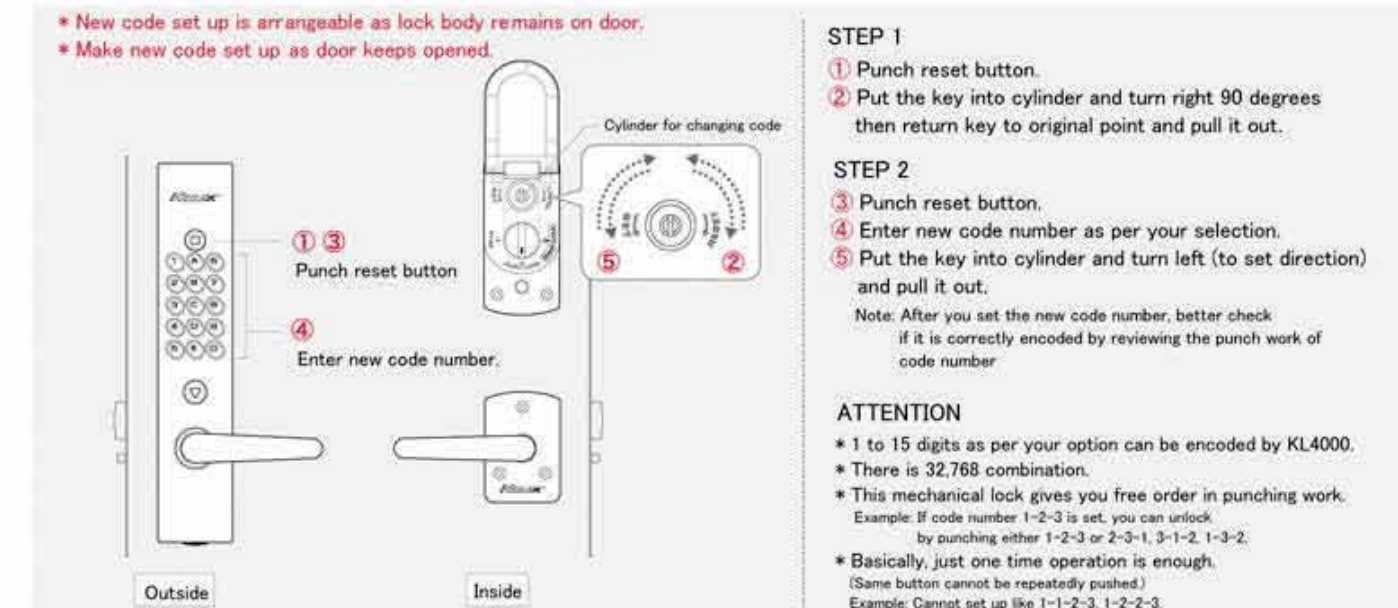
■ Color variation



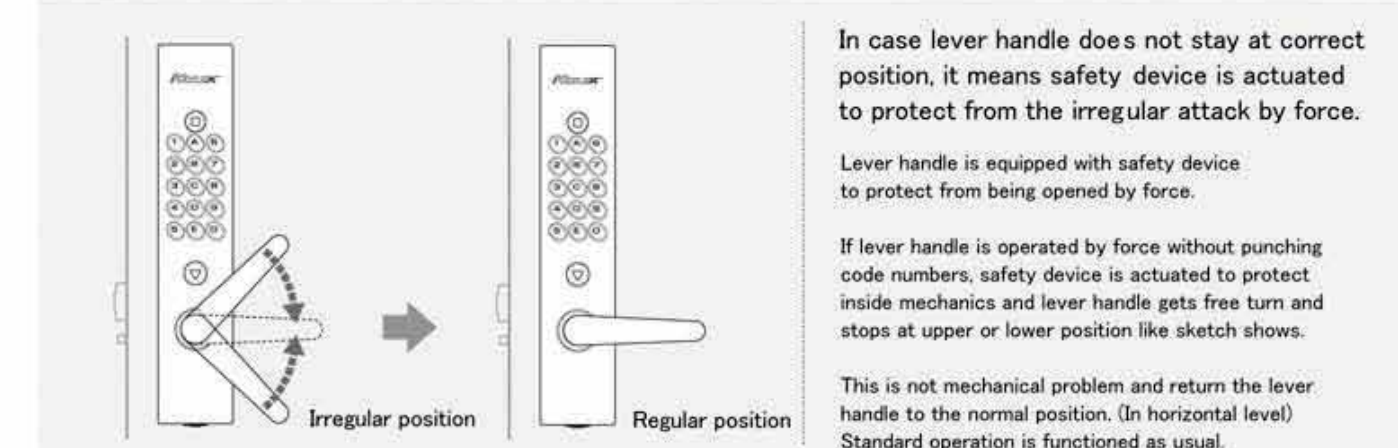
■ For unlocking



■ Steps for changing code number For security, regular change of code is recommended.



■ Correct position of lever handle



In case lever handle does not stay at correct position, it means safety device is actuated to protect from the irregular attack by force.

Lever handle is equipped with safety device to protect from being opened by force.

If lever handle is operated by force without punching code numbers, safety device is actuated to protect inside mechanics and lever handle gets free turn and stops at upper or lower position like sketch shows.

This is not mechanical problem and return the lever handle to the normal position. (In horizontal level) Standard operation is functioned as usual.