

OHTORI KIKO



*Diamond*

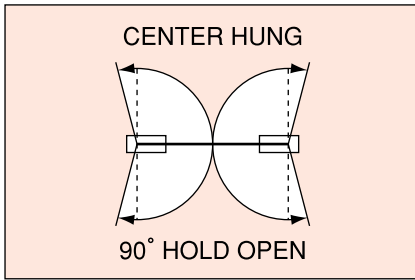
# FLOOR HINGES

- PIVOT HINGES
- AUTO HINGES
- DOOR SELECTORS
- ROTARY DOOR STOPPERS
- SPRING HINGES





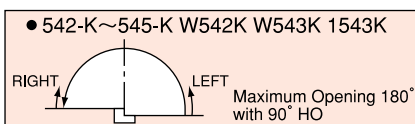
## CENTER HUNG Double Action



Model		MAXIMUM DOOR		PAGE
(90°)Hold Open	Non-Hold Open	WIDTH×HEIGHT(mm)	WEIGHT (kg)	
<b>■TIMBER and STEEL DOORS</b>				
ST-81	T-81	950×2,100	120	5
ST-82	T-82	1,050×2,100	200	5
ST-83	T-83	1,200×2,250	250	5
ST-210N	T-210N	800×1,800	55	6
ST-220N	T-220N	900×2,100	80	6
D-22	22	950×2,100	110	6
D-23	23	1,000×2,100	130	6
1001-S	1001	900×2,100	70	7
1002-S	1002	950×2,100	100	7
1003-S	1003	1,050×2,400	120	7
1051-S	1051	900×2,100	70	7
1052-S	1052	950×2,100	100	7
1053-S	1053	1,050×2,400	120	7
ST-33	T-33	1,050×2,100	160	8
ST-335	T-335	1,050×2,400	160	8
ST-44	T-44	1,050×2,400	200	9
ST-45	T-45	1,200×2,400	250	9
ST-46	T-46	1,500×2,700	280	9
SH-30	H-30	950×2,100	120	9
SH-40	H-40	1,050×2,400	185	9
<b>■TEMPERED GLASS DOORS</b>				
ST-181	T-181	914×2,134	120	11
ST-182	T-182	1,067×2,134	200	11
ST-183	T-183	1,200×2,134	250	11
1001-SG	1001-G	762×2,134	70	12
1002-SG	1002-G	914×2,134	100	12
1003-SG	1003-G	1,067×2,134	120	12
ST-133	T-133	1,067×2,134	160	12
D-122	122	762×2,134	110	13
SH-130	H-130	914×2,134	120	13
SH-140	H-140	1,067×2,438	185	13
ST-144	T-144	1,067×2,134	200	14
ST-145	T-145	1,219×2,438	250	14

## OFFSET HUNG Single Action

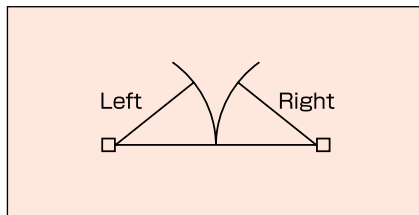
HO and NHO, double functions in one bddy.



Model		MAXIMUM DOOR		PAGE
(90°)Hold Open	Non-Hold Open	WIDTH×HEIGHT(mm)	WEIGHT (kg)	
<b>■STEEL DOORS</b>				
	542K	950×2,100	70	16
	543K	1,050×2,200	110	16
	544K	1,200×2,300	150	16
	545K	1,600×2,400	185	16
<b>■TIMBER DOORS</b>				
	W542K	950×2,100	70	16
	W543K	1,050×2,200	110	16
<b>■TEMPERED GLASS DOORS</b>				
	1543K	914×2,134	110	16

# PIVOT HINGES

## OFFSET HUNG



Model	MAXIMUM DOOR		PAGE
	WIDTH×HEIGHT(mm)	WEIGHT (kg)	
<b>■ OFFSET HUNG</b>			
11D	900×2,100	80	19
11CD	900×2,100	80	19
11C	900×2,100	80	19
13CD	1,050×2,200	120	20
13C	1,050×2,200	120	20
2CAD	1,500×2,400	180	20
2CA	1,500×2,400	180	20
3CAD	1,800×3,000	300	21
3CA	1,800×3,000	300	21
11B	900×2,100	80	21
13B	1,050×2,200	120	22
2BC	1,500×2,400	180	22
2B	1,500×2,400	180	22
3BC	1,800×3,000	300	23
3B	1,800×3,000	300	23
S-4B	4,000×5,000	1,000	23
SW-11D	900×2,200	80	24
SW-11CD	900×2,100	80	24
SW-11C	900×2,100	80	24
SW-11B	900×2,100	80	25

※S-4B is also applicable to maximum door weight up to 1,000kg. Specify if required.

## CENTER HUNG

Model	MAXIMUM DOOR		PAGE
	WIDTH×HEIGHT(mm)	WEIGHT (kg)	
<b>■ CENTER HUNG</b>			
S-1AF	900×2,100	100	25
S-1A	900×2,100	100	26
S-2A	1,500×2,400	180	26
S-3A	1,800×3,000	300	27
S-4A	4,000×5,000	1,000	27

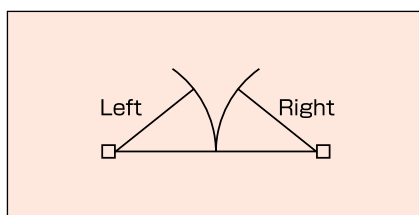
※S-4A, is also applicable to maximum door weight up to 1,000kg. Specify if required.

# AUTO HINGES

## CONCEALED type CENTER HUNG Single Action

### ■ FEATURES

- Suitable for fire doors
- Easy to install
- Fully concealed
- Outstanding durability
- Simple speed adjustment



MAXIMUM OPENING ANGLE	Model	DOOR DIMENTIONS		PAGE
		WIDTH×HEIGHT×DEPTH	WEIGHT (kg)	
<b>■ WICKET DOOR</b>				
CENTER HUNG 180° LEFT or RIGHT	AH-8K	800×1,850×36	40	29
<b>■ FIRE DOOR</b>				
CENTER HUNG 180° LEFT or RIGHT	AH-8	800×2,000×36	50	29
	AH-10	1,000×2,100×40	85	30
	AH-12	1,200×2,100×40	100	30
	AH-14	1,400×2,100×40	130	30
	AH-16	1,600×2,400×45	160	31
	AH-18	1,800×2,400×50	200	31
	AH-22	2,200×2,400×50	240	31
	AH-26	2,600×2,600×55	310	32
	AH-30	3,000×2,600×55	410	32
	AH-30H	3,000×2,600×55	510	32
	AH-35	3,500×2,800×60	650	33
	AH-40	4,000×3,000×65	800	33

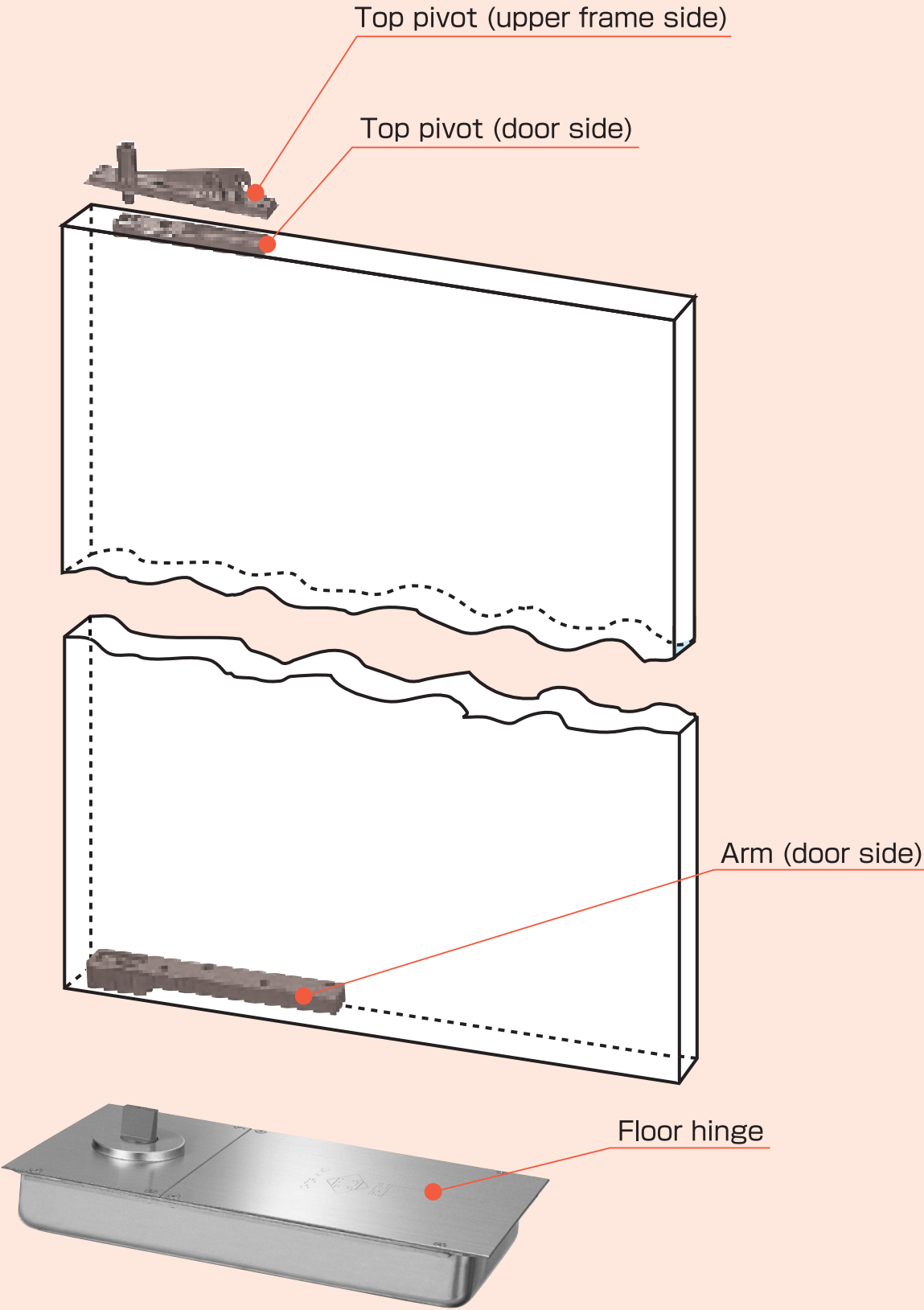
Please note that the specifications on this leaflet may be improved without notice.

# FLOOR HINGES



## CENTER HUNG Double Action

STANDARD SETTING OF DIA FLOOR HINGES FOR WOOD OR STEEL FRAMED DOORS:

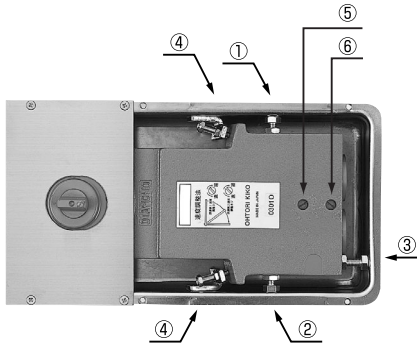




# ST-81·T-81/ST-82·T-82/ST-83·T-83

## Thermo Constant All Seasons.

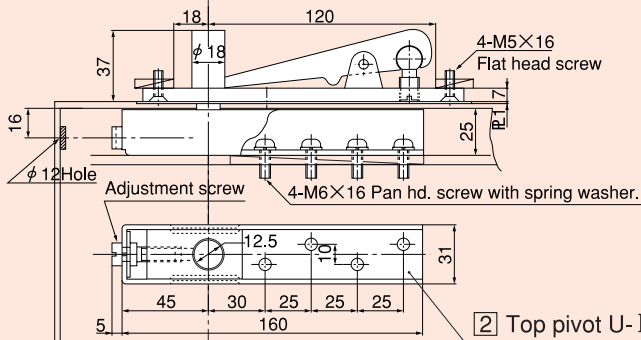
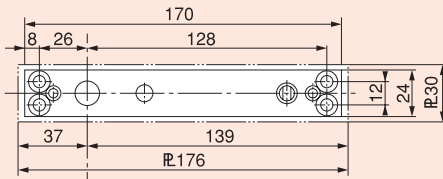
No speed adjustment required between (-10°~50°)



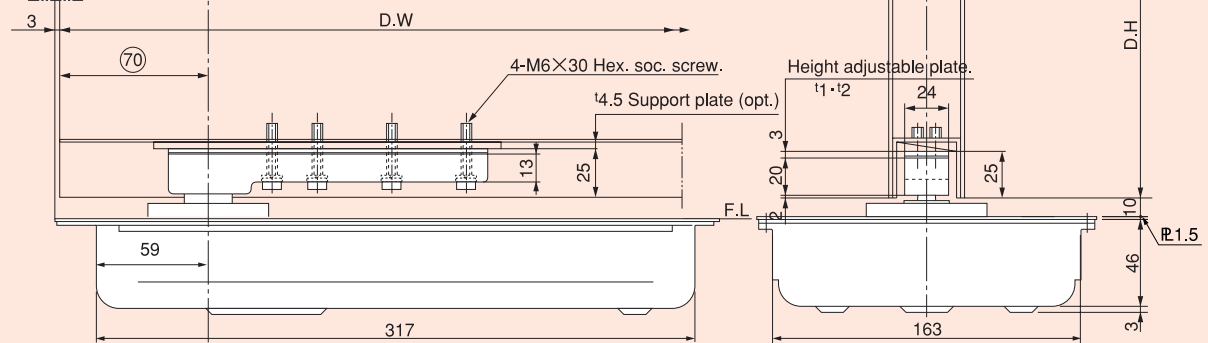
- ① Door closure position adjusting screw
- ② Door closure position adjusting screw
- ③ Door moving direction adjusting screw
- ④ Door moving direction adjusting screw
- ⑤ Door closing speed adjusting valve
- ⑥ Door closing speed adjusting valve

Model		Maximum Door	Weight
(90°) Hold Open	Non-Hold Open	Width×Height (mm)	(kg)
ST-81	T-81	950×2,100	120
ST-82	T-82	1,050×2,100	200
ST-83	T-83	1,200×2,250	250

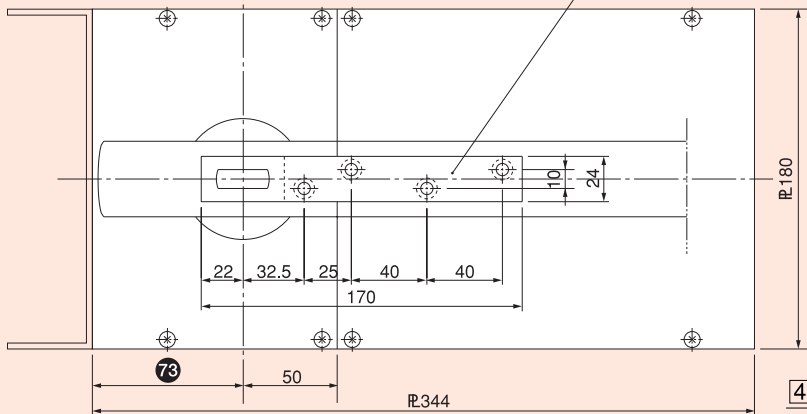
1 Top pivot (upper frame side)



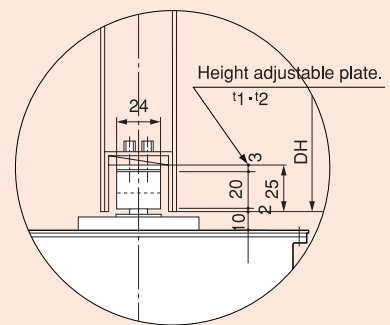
2 Top pivot U-II (door side)



3 Arm (door side)

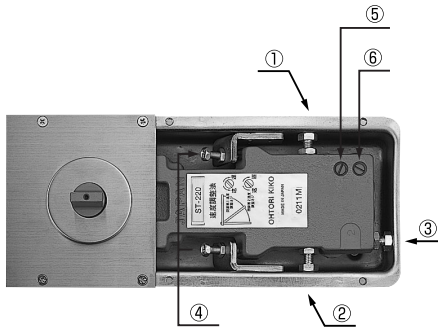


4 Floor hinge body only (floor side).



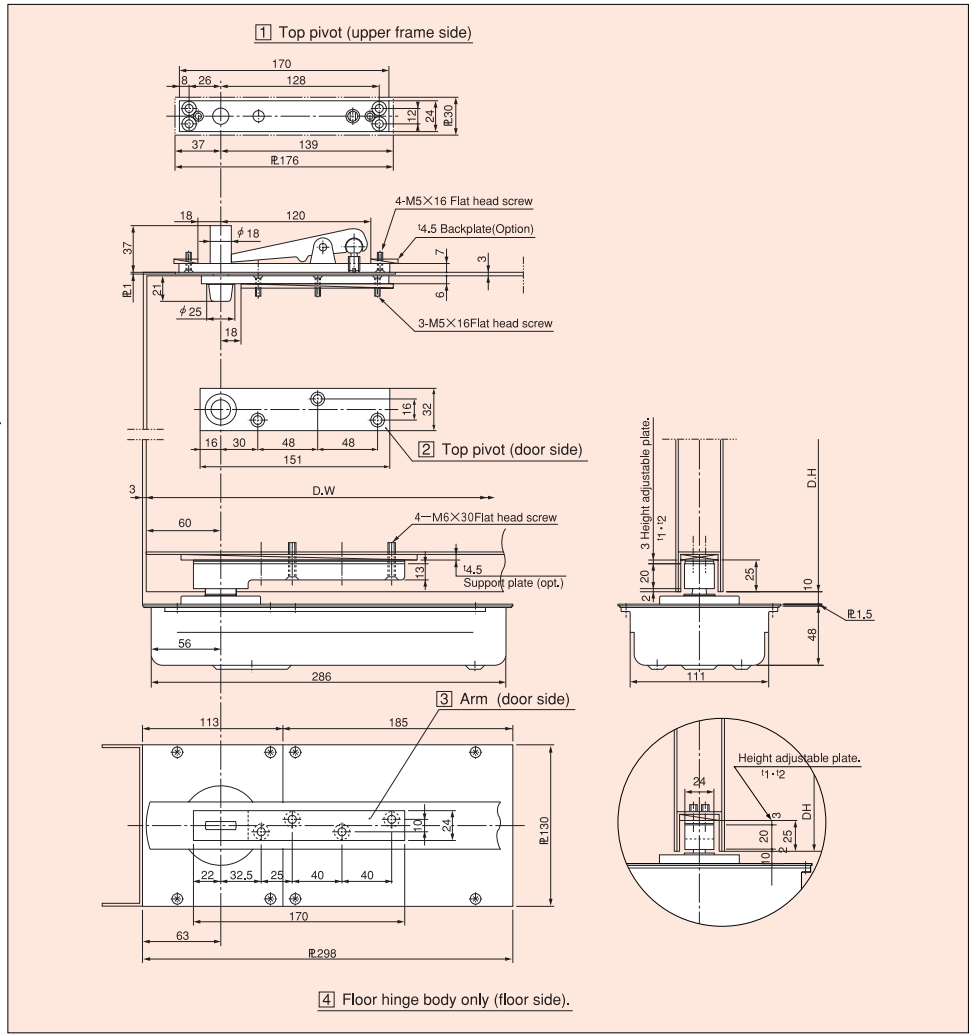
Note: For ST-81, 82 and 83 series, the dimension between spindle center of floor plate and vertical frame is 73mm. Specify if "63mm" is necessary.

# ST-210N·T-210N ST-220N·T-220N

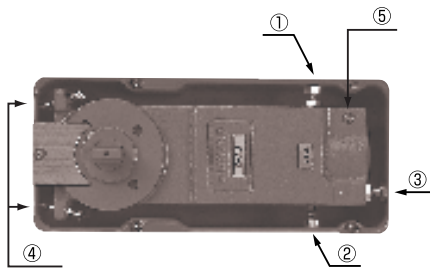


- ① Door closure position adjusting screw
- ② Door closure position adjusting screw
- ③ Door moving direction adjusting screw
- ④ Door moving direction adjusting screw
- ⑤ Door closing speed adjusting valve
- ⑥ Door closing speed adjusting valve

Model		Maximum Door	Weight
(90°) Hold Open	Non-Hold Open	Width×Height (mm)	(kg)
ST-210N	T-210N	800×1,800	55
ST-220N	T-220N	900×2,100	80

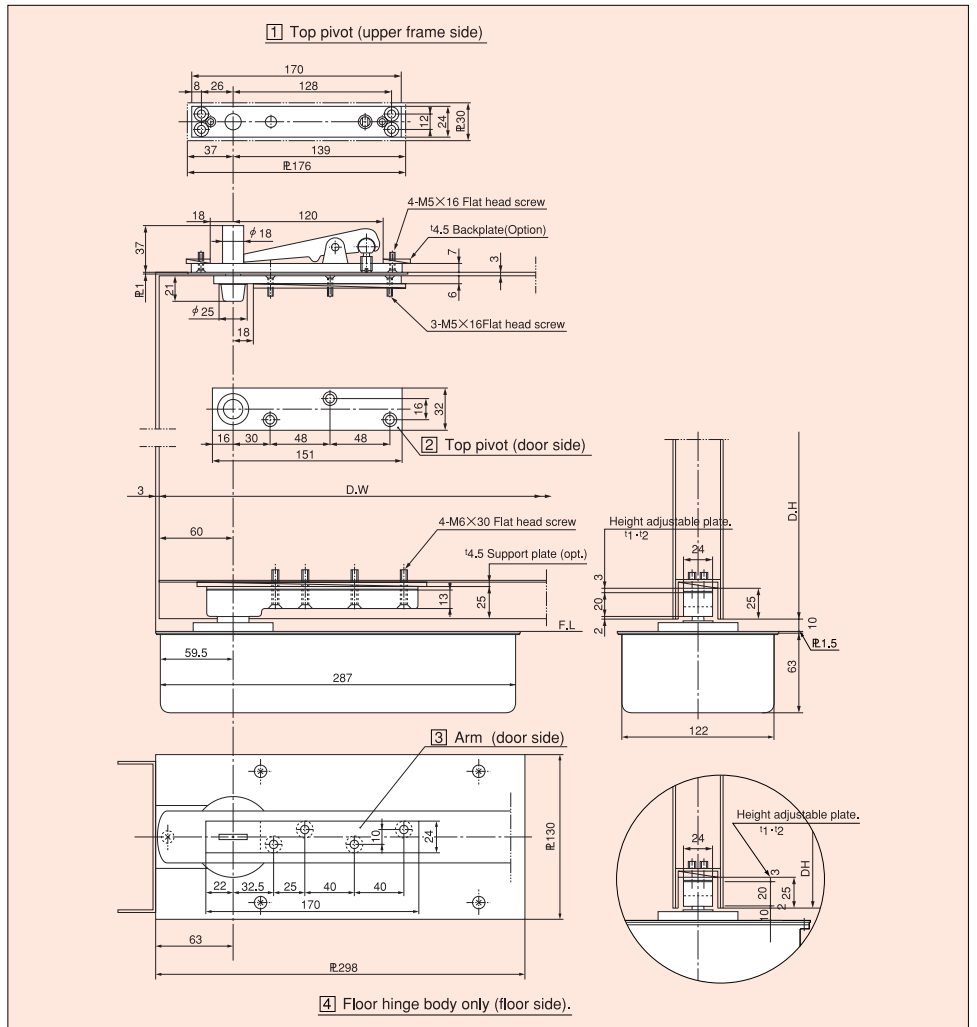


# D-22·22 D-23·23

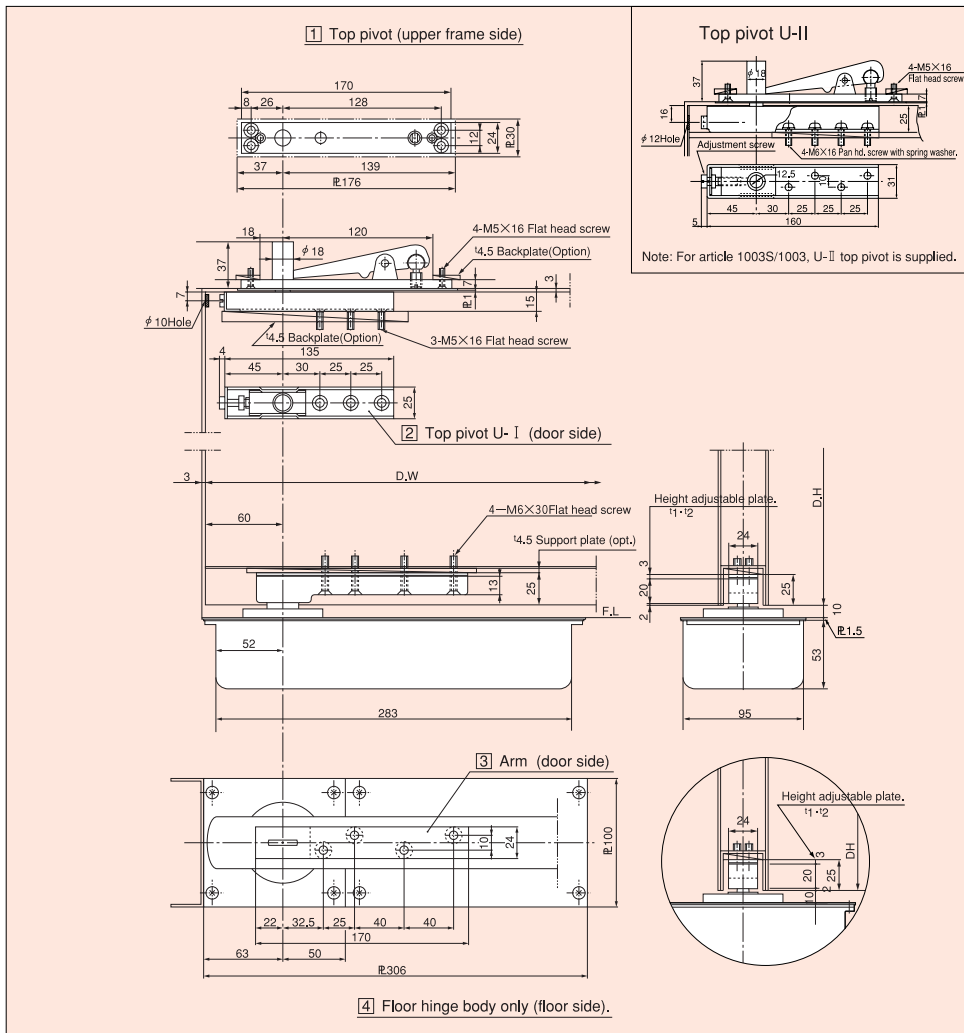


- ① Door closure position adjusting screw
- ② Door closure position adjusting screw
- ③ Door moving direction adjusting screw
- ④ Door moving direction adjusting screw
- ⑤ Door closing speed adjusting valve

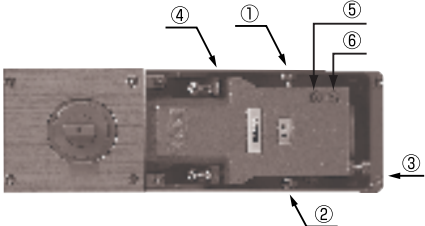
Model		Maximum Door	Weight
(90°) Hold Open	Non-Hold Open	Width×Height (mm)	(kg)
D-22	22	950×2,100	110
D-23	23	1,000×2,100	130





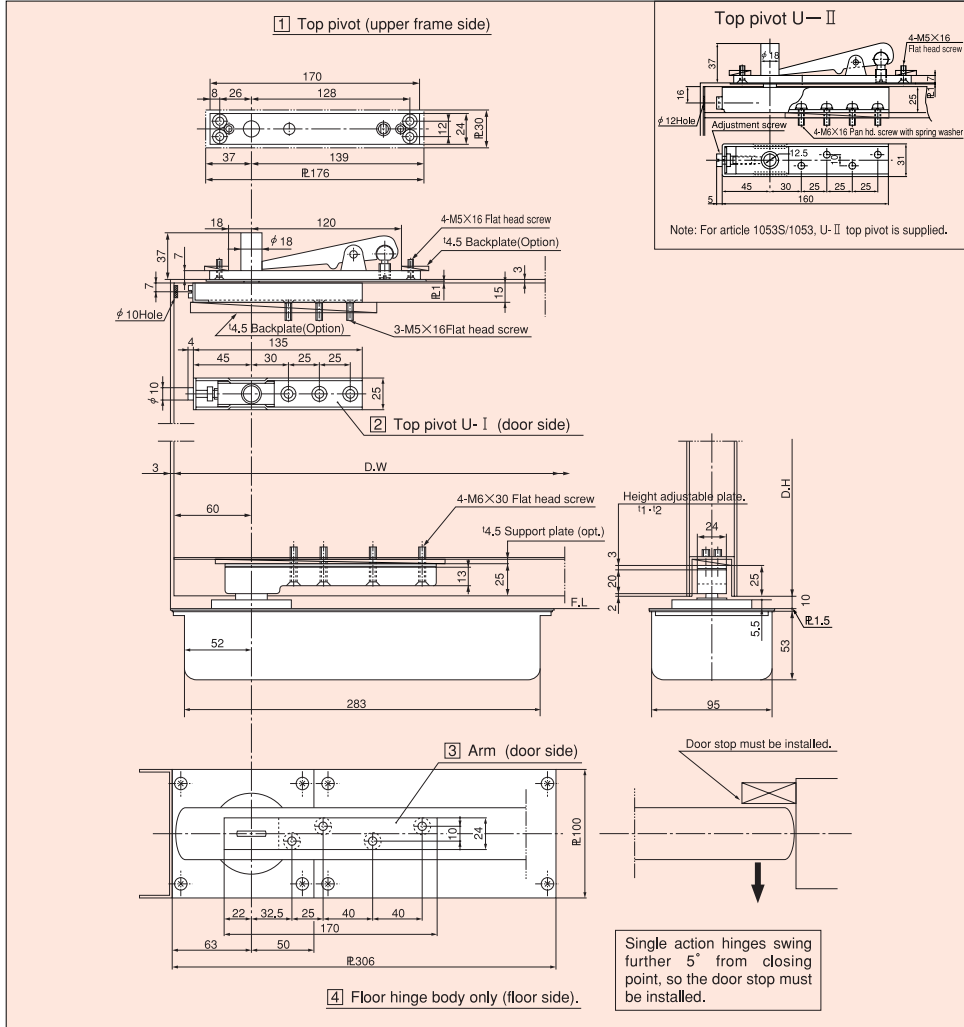


**1001S · 1001**  
**1002S · 1002**  
**1003S · 1003**

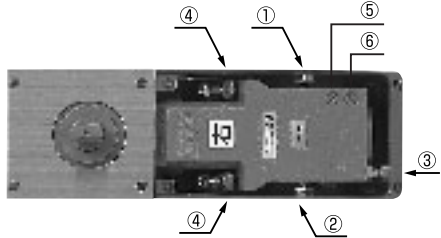


- ① Door closure position adjusting screw
- ② Door closure position adjusting screw
- ③ Door moving direction adjusting screw
- ④ Door moving direction adjusting screw
- ⑤ Door closing speed adjusting valve
- ⑥ Door closing speed adjusting valve

Model		Maximum Door	Weight
(90°) Hold Open	Non-Hold Open	Width×Height (mm)	(kg)
1001-S	1001	900×2,100	70
1002-S	1002	950×2,100	100
1003-S	1003	1,050×2,400	120



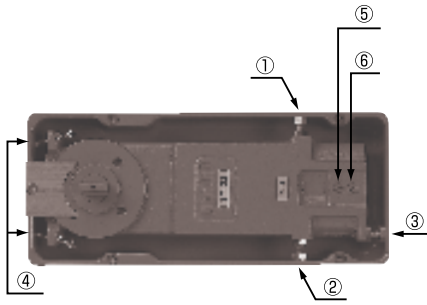
**1051-S · 1051**  
**1052-S · 1052**  
**1053-S · 1053**



- ① Door closure position adjusting screw
- ② Door closure position adjusting screw
- ③ Door moving direction adjusting screw
- ④ Door moving direction adjusting screw
- ⑤ Door closing speed adjusting valve
- ⑥ Door closing speed adjusting valve

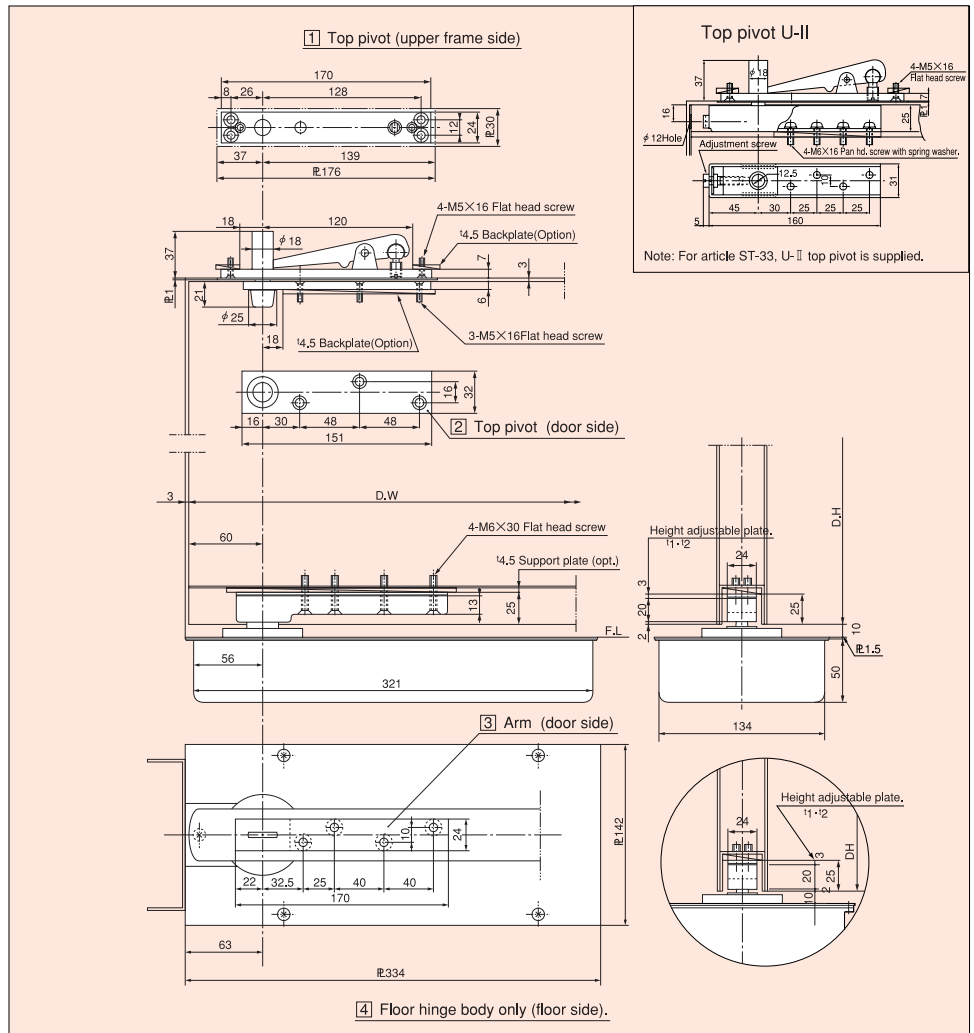
Model		Maximum Door	Weight
(90°) Hold Open	Non-Hold Open	Width×Height (mm)	(kg)
1051-S	1051	900×2,100	70
1052-S	1052	950×2,100	100
1053-S	1053	1,050×2,400	120

# ST-33 · T-33

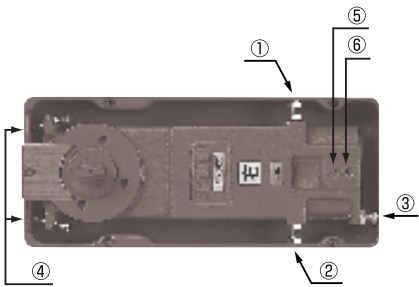


- ① Door closure position adjusting screw
- ② Door closure position adjusting screw
- ③ Door moving direction adjusting screw
- ④ Door moving direction adjusting screw
- ⑤ Door closing speed adjusting valve
- ⑥ Door closing speed adjusting valve

Model		Maximum Door	Weight
(90°) Hold Open	Non-Hold Open	Width×Height (mm)	(kg)
ST-33	T-33	1,050×2,100	160

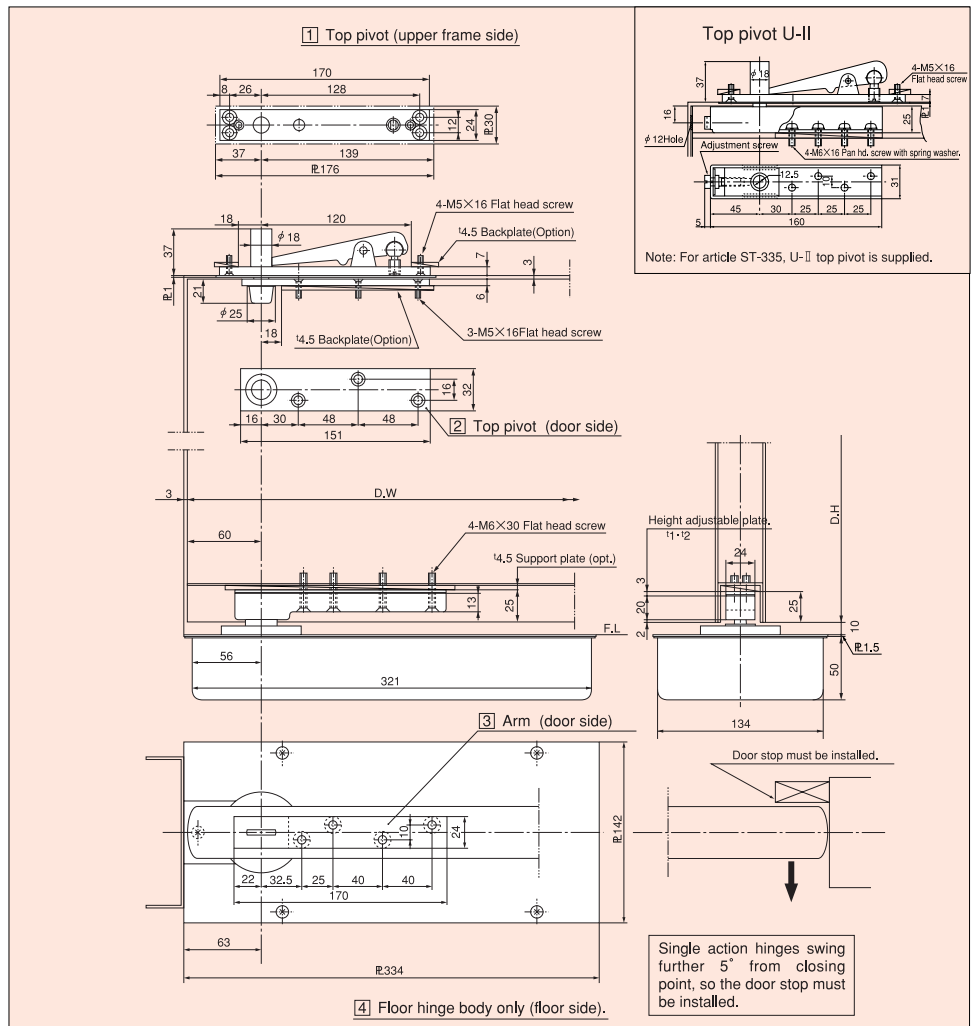


# ST-335 · T-335



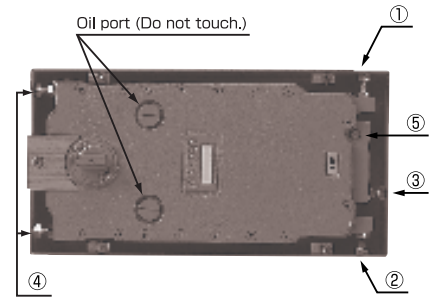
- ① Door closure position adjusting screw
- ② Door closure position adjusting screw
- ③ Door moving direction adjusting screw
- ④ Door moving direction adjusting screw
- ⑤ Door closing speed adjusting valve
- ⑥ Door closing speed adjusting valve

Model		Maximum Door	Weight
(90°) Hold Open	Non-Hold Open	Width×Height (mm)	(kg)
ST-335	T-335	1,050×2,400	160





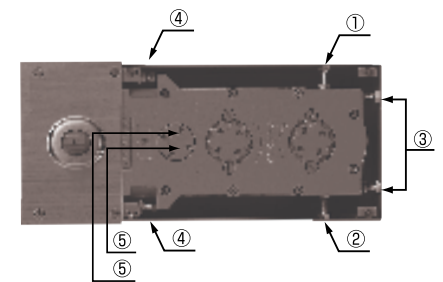
# ST-44 · T-44 ST-45 · T-45 ST-46 · T-46



- ① Door closure position adjusting screw
- ② Door closure position adjusting screw
- ③ Door moving direction adjusting screw
- ④ Door moving direction adjusting screw
- ⑤ Door closing speed adjusting valve

Model		Maximum Door	Weight
(90°) Hold Open	Non-Hold Open	Width×Height (mm)	(kg)
ST-44	T-44	1,050×2,400	200
ST-45	T-45	1,200×2,400	250
ST-46	T-46	1,500×2,700	280

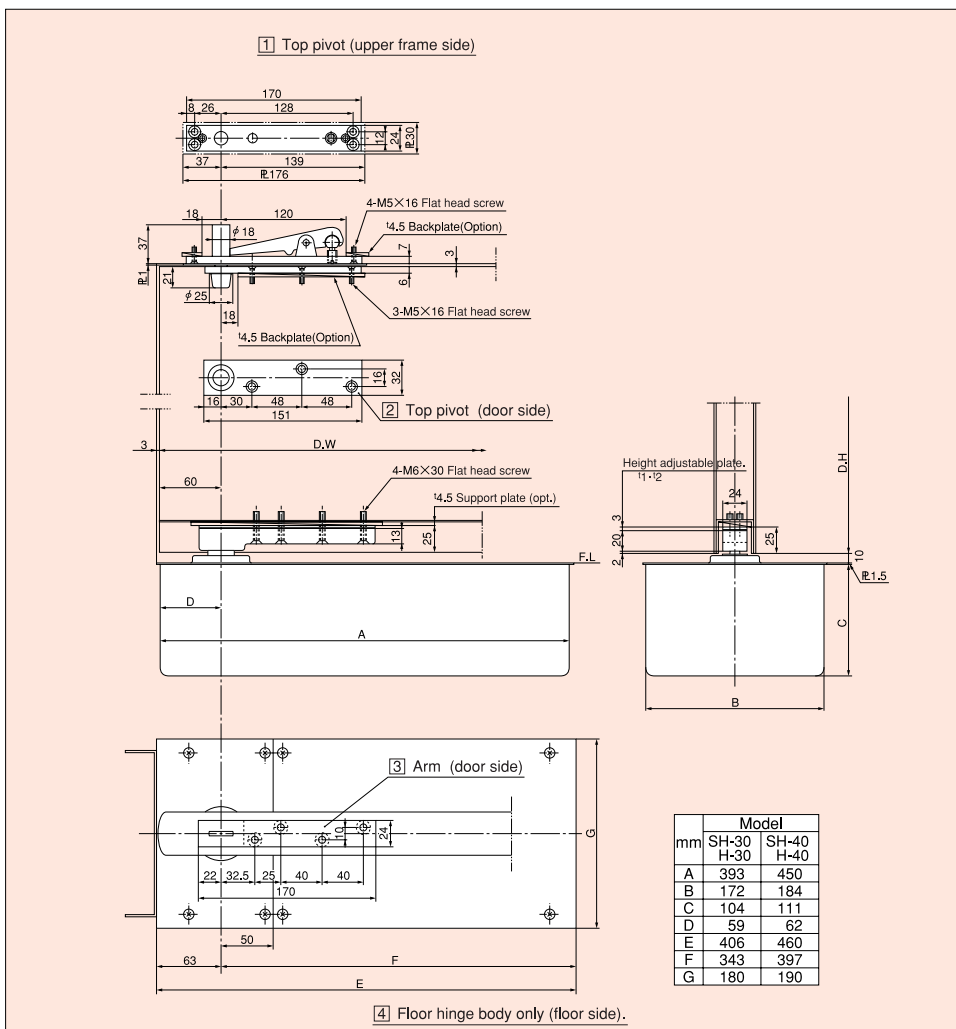
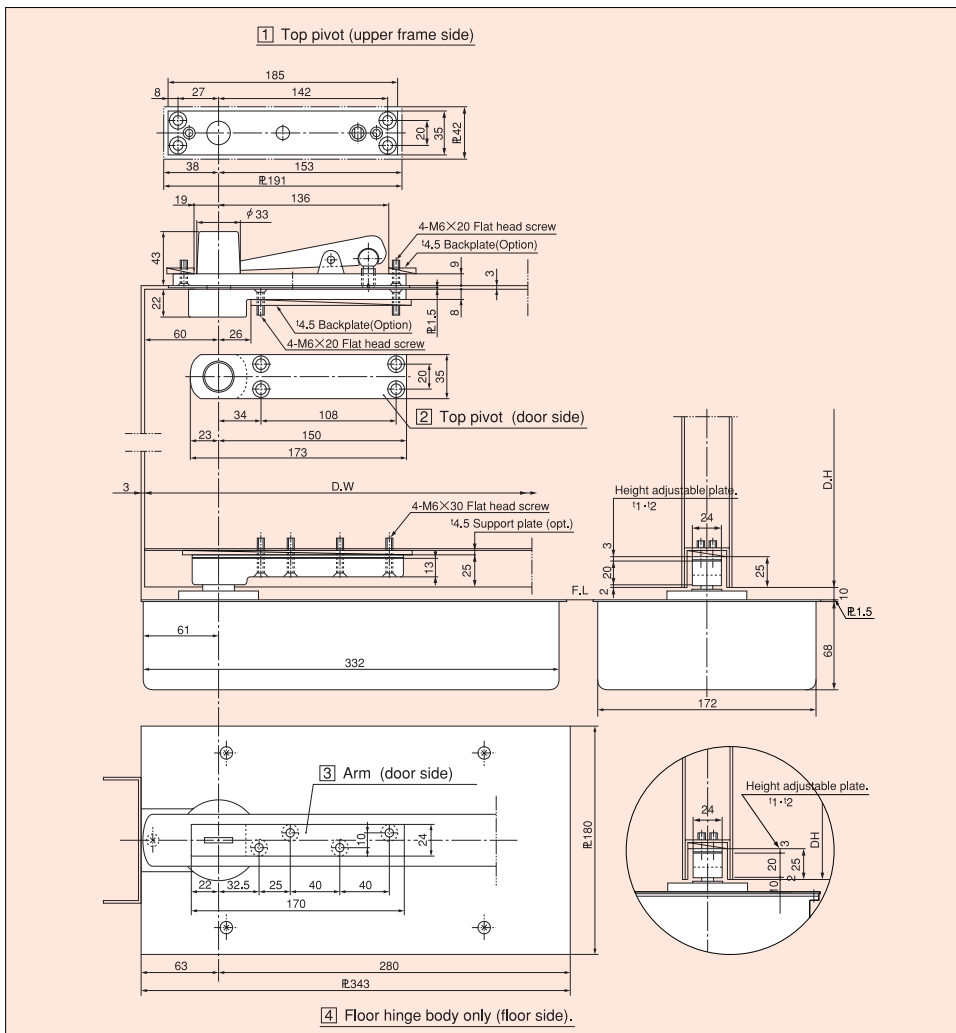
# SH-30 · H-30 SH-40 · H-40



- ① Door closure position adjusting screw
- ② Door closure position adjusting screw
- ③ Door moving direction adjusting screw
- ④ Door moving direction adjusting screw
- ⑤ Door closing speed adjusting valve to be effected after the plug detached.

Model		Maximum Door	Weight
(90°) Hold Open	Non-Hold Open	Width×Height (mm)	(kg)
SH-30	H-30	950×2,100	120
SH-40	H-40	1,050×2,400	185

	Model						
	A	B	C	D	E	F	G
SH-30·H-30	393	172	104	59	406	343	180
SH-40·H-40	450	184	111	62	460	397	190

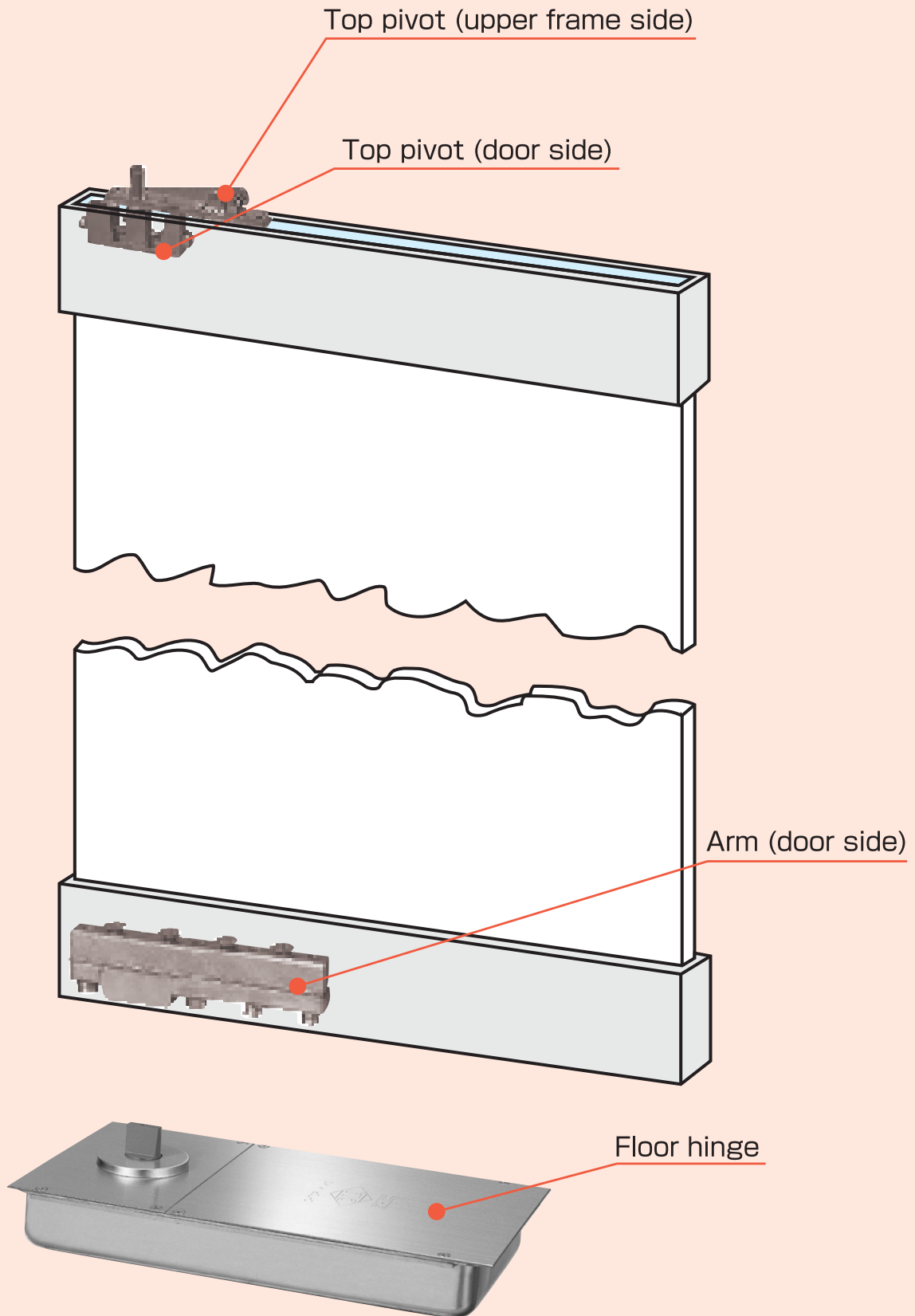


# FLOOR HINGES



## CENTER HUNG Double Action

STANDARD SETTING OF DIA FLOOR HINGES FOR TEMPERED GLASS DOORS:

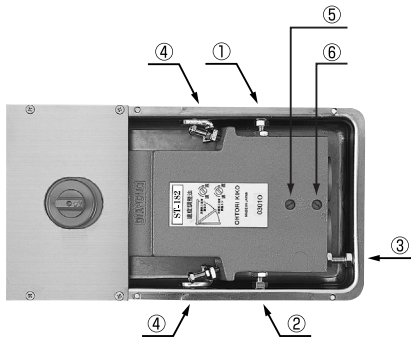




# ST-181·T-181/ST-182·T-182/ST-183·T-183

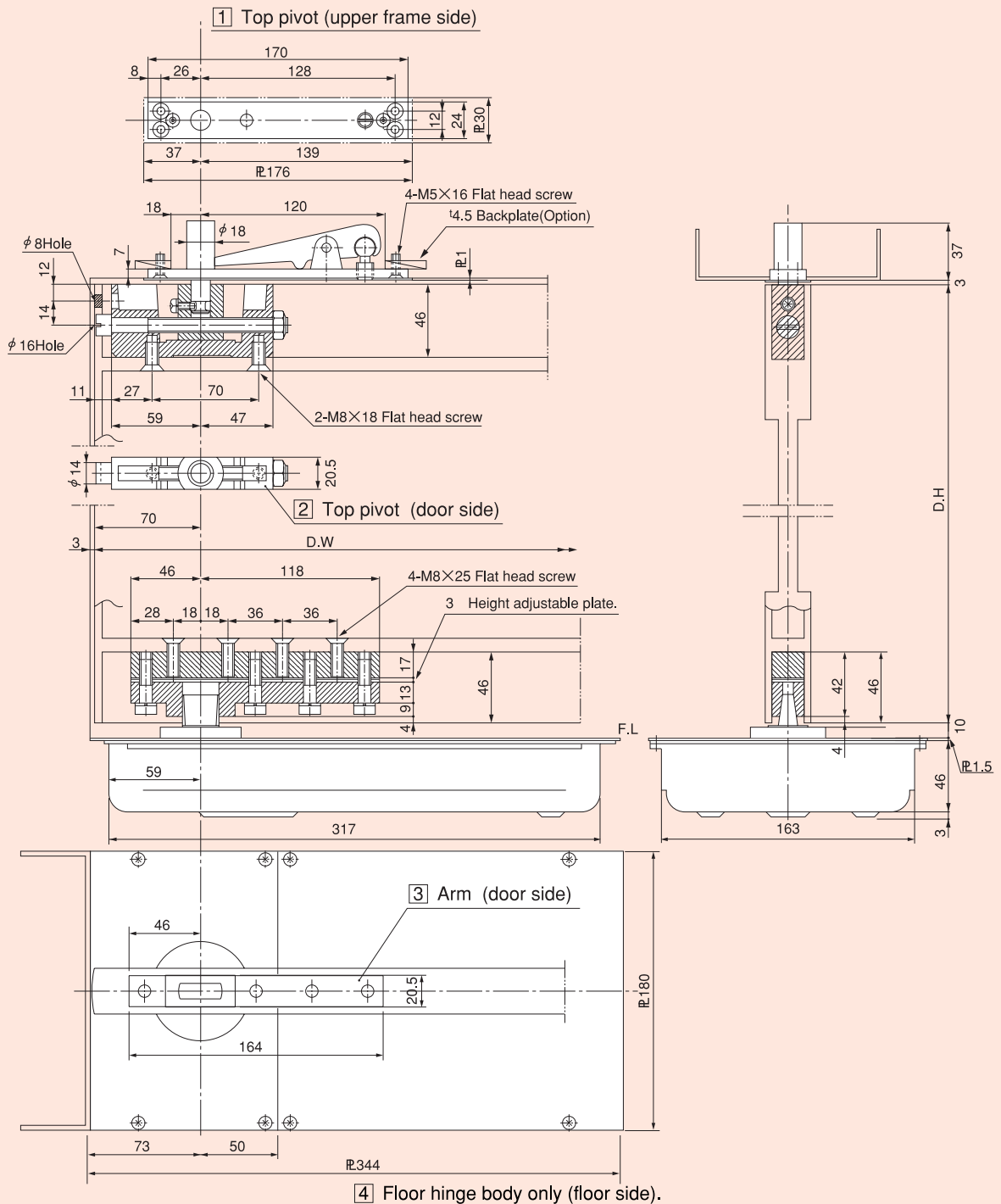
**Thermo Constant All Seasons.**

**No speed adjustment required between (-10°~50°)**

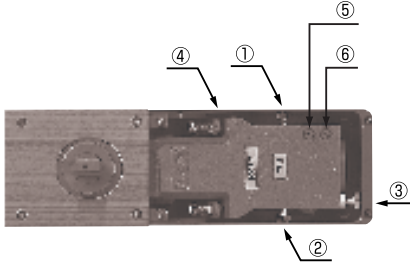


- ① Door closure position adjusting screw
- ② Door closure position adjusting screw
- ③ Door moving direction adjusting screw
- ④ Door moving direction adjusting screw
- ⑤ Door closing speed adjusting valve
- ⑥ Door closing speed adjusting valve

Model		Maximum Door
(90°) Hold Open	Non-Hold Open	Width×Height (mm)
ST-181	T-181	914×2,134
ST-182	T-182	1,067×2,134
ST-183	T-183	1,200×2,134

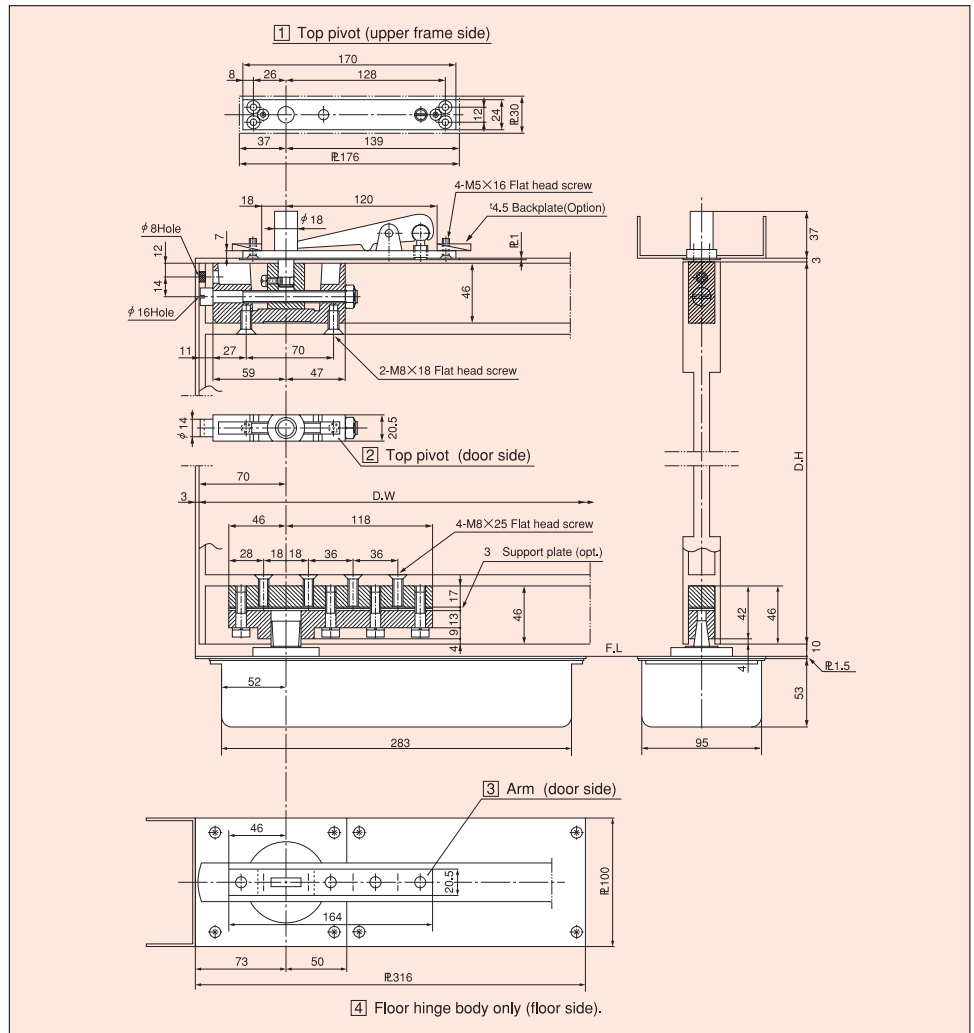


# 1001SG · 1001G 1002SG · 1002G 1003SG · 1003G

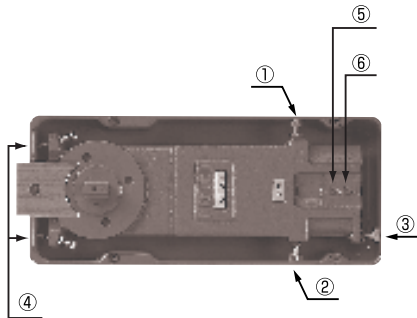


- ① Door closure position adjusting screw
- ② Door closure position adjusting screw
- ③ Door moving direction adjusting screw
- ④ Door moving direction adjusting screw
- ⑤ Door closing speed adjusting valve
- ⑥ Door closing speed adjusting valve

Model		Maximum Door
(90°) Hold Open	Non-Hold Open	Width×Height (mm)
1001SG	1001G	762×2,134
1002SG	1002G	914×2,134
1003SG	1003G	1,067×2,134

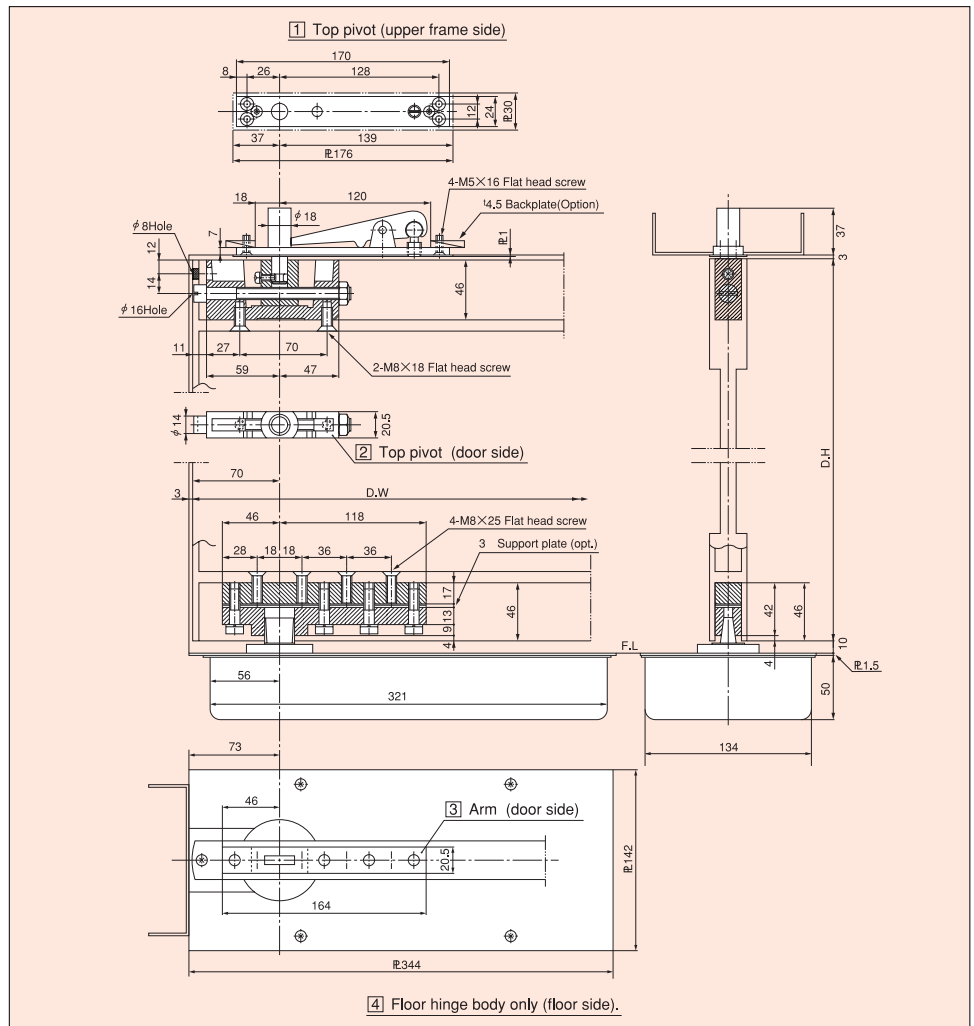


# ST-133 · T-133

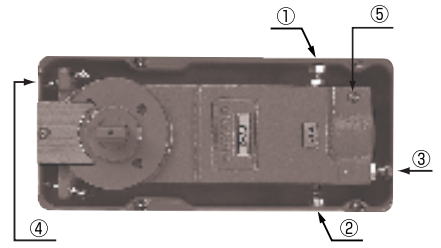


- ① Door closure position adjusting screw
- ② Door closure position adjusting screw
- ③ Door moving direction adjusting screw
- ④ Door moving direction adjusting screw
- ⑤ Door closing speed adjusting valve
- ⑥ Door closing speed adjusting valve

Model		Maximum Door
(90°) Hold Open	Non-Hold Open	Width×Height (mm)
ST-133	T-133	1,067×2,134

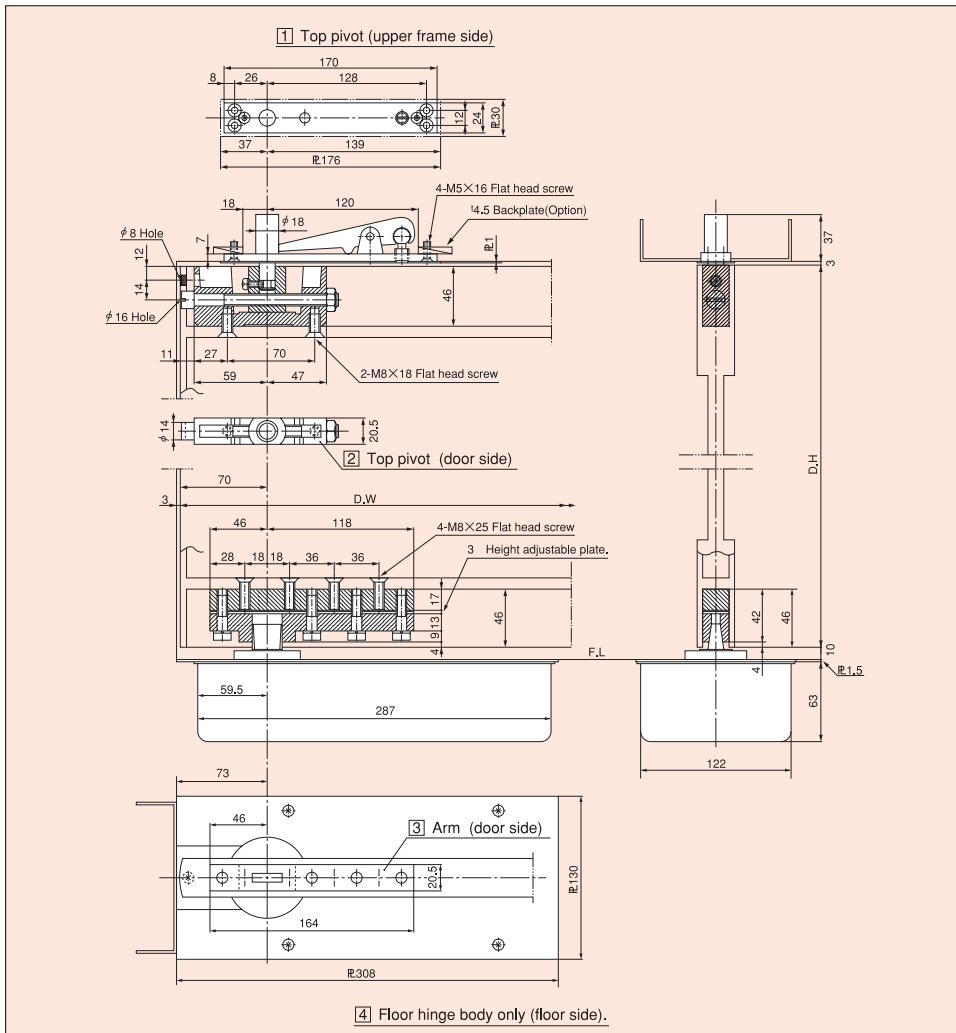


# D-122 · 122

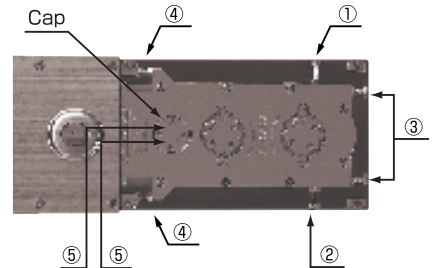


- ① Door closure position adjusting screw
- ② Door closure position adjusting screw
- ③ Door moving direction adjusting screw
- ④ Door moving direction adjusting screw
- ⑤ Door closing speed adjusting valve

Model		Maximum Door
(90°) Hold Open	Non-Hold Open	Width×Height (mm)
D-122	122	762×2,134



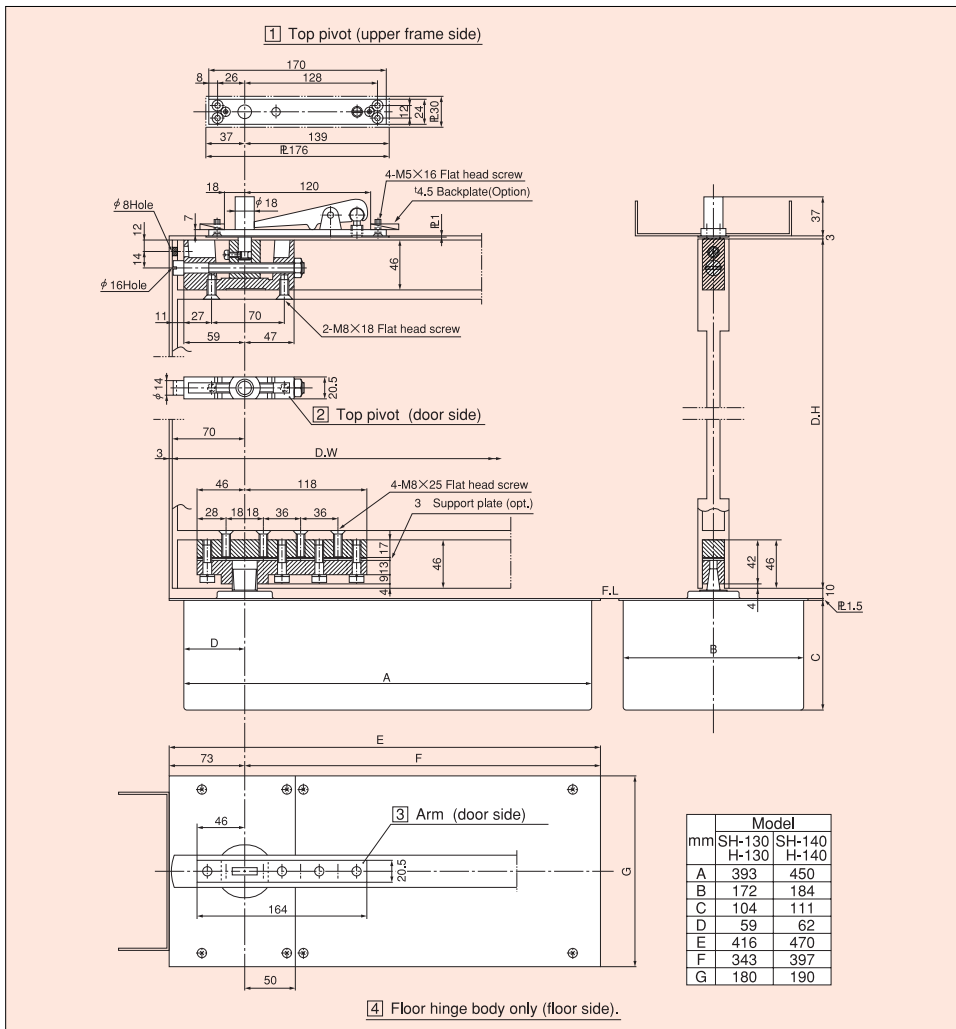
# SH-130 · H-130 SH-140 · H-140



- ① Door closure position adjusting screw
- ② Door closure position adjusting screw
- ③ Door moving direction adjusting screw
- ④ Door moving direction adjusting screw
- ⑤ Door closing speed adjusting valve to be effected after the plug detached.

Model		Maximum Door
(90°) Hold Open	Non-Hold Open	Width×Height (mm)
SH-130	H-130	914×2,134
SH-140	H-140	1,067×2,438

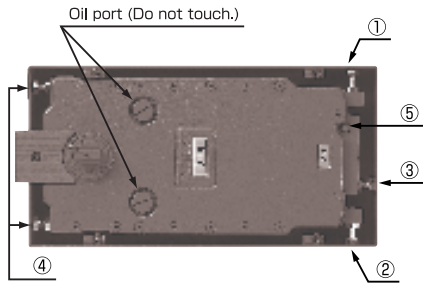
	A	B	C	D	E	F	G
SH-130 · H-130	393	172	104	59	416	343	180
SH-140 · H-140	450	184	111	62	470	397	190



	Model	
mm	SH-130 H-130	SH-140 H-140
A	393	450
B	172	184
C	104	111
D	59	62
E	416	470
F	343	397
G	180	190

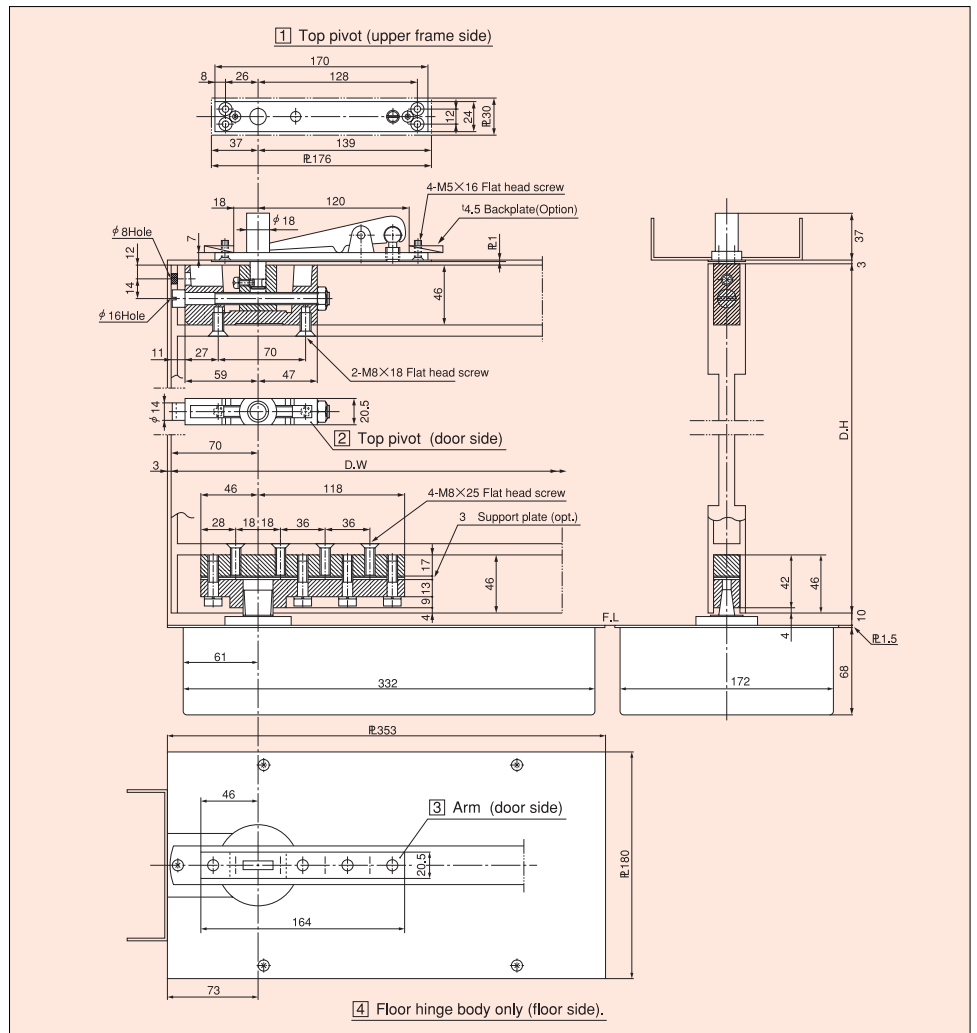
# ST-144 · T-144

# ST-145 · T-145



- ① Door closure position adjusting screw
- ② Door closure position adjusting screw
- ③ Door moving direction adjusting screw
- ④ Door moving direction adjusting screw
- ⑤ Door closing speed adjusting valve

Model		Maximum Door
(90°) Hold Open	Non-Hold Open	Width×Height (mm)
ST-144	T-144	1,067×2,134
ST-145	T-145	1,219×2,438

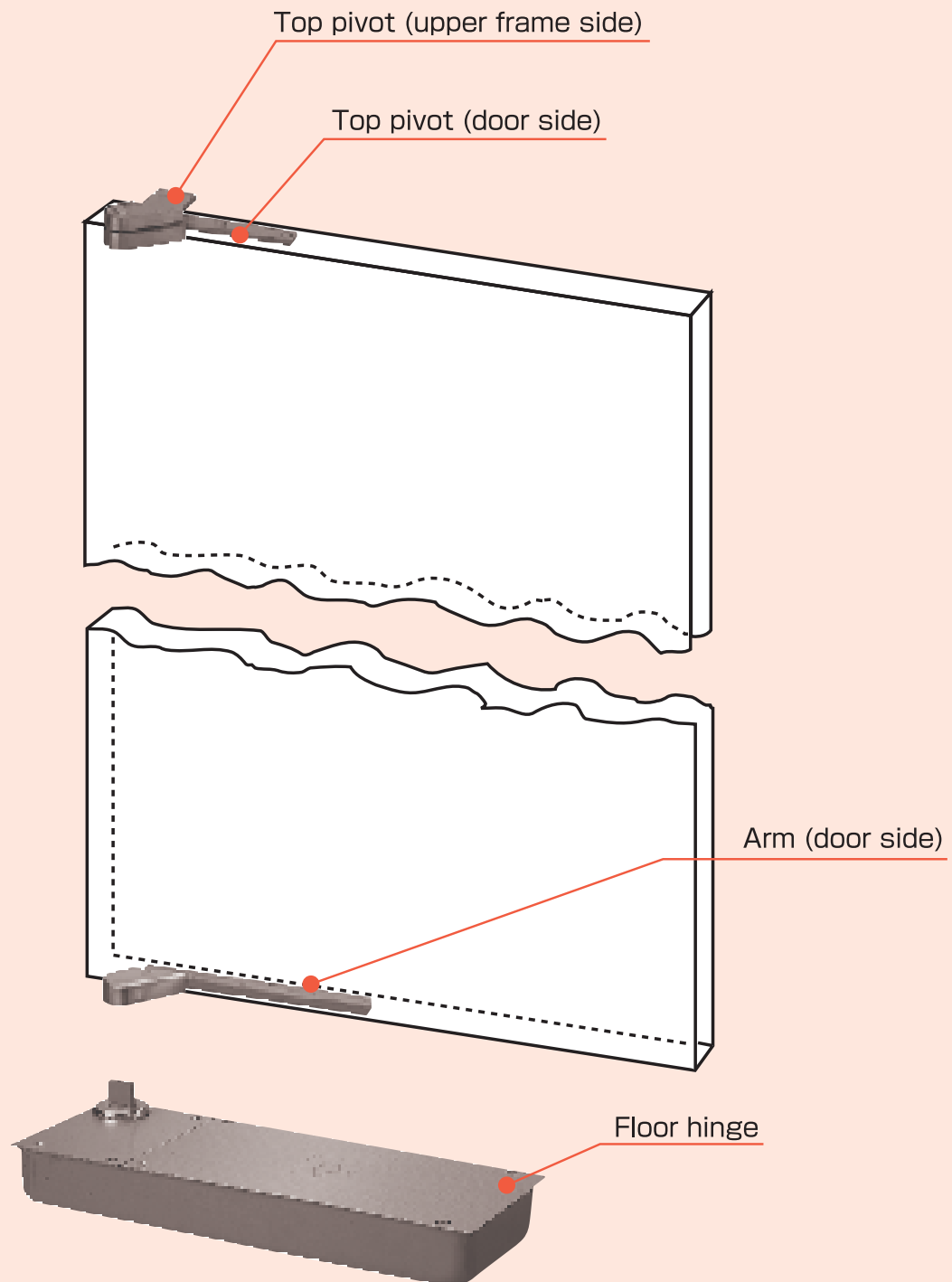




# FLOOR HINGES



## OFFSET HUNG Single Action HO and NHO, double functions in one body.



\*540 series products have NHO and HO devices in one body.

■ For NHO

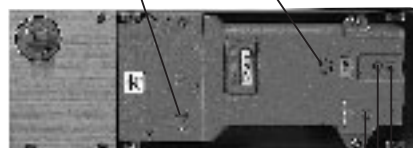
Hold the door open at 30°, and turn the stop screw clockwise until end.

■ For HO

Hold the door open at 30°, and turn the stop screw counter-clockwise until screw head and floor plate surface become flat.

Stop screw

Oil port (Do not touch.)

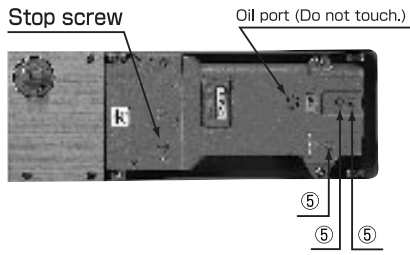


Speed control valve No.3 (for latching)

Speed control valve No.1

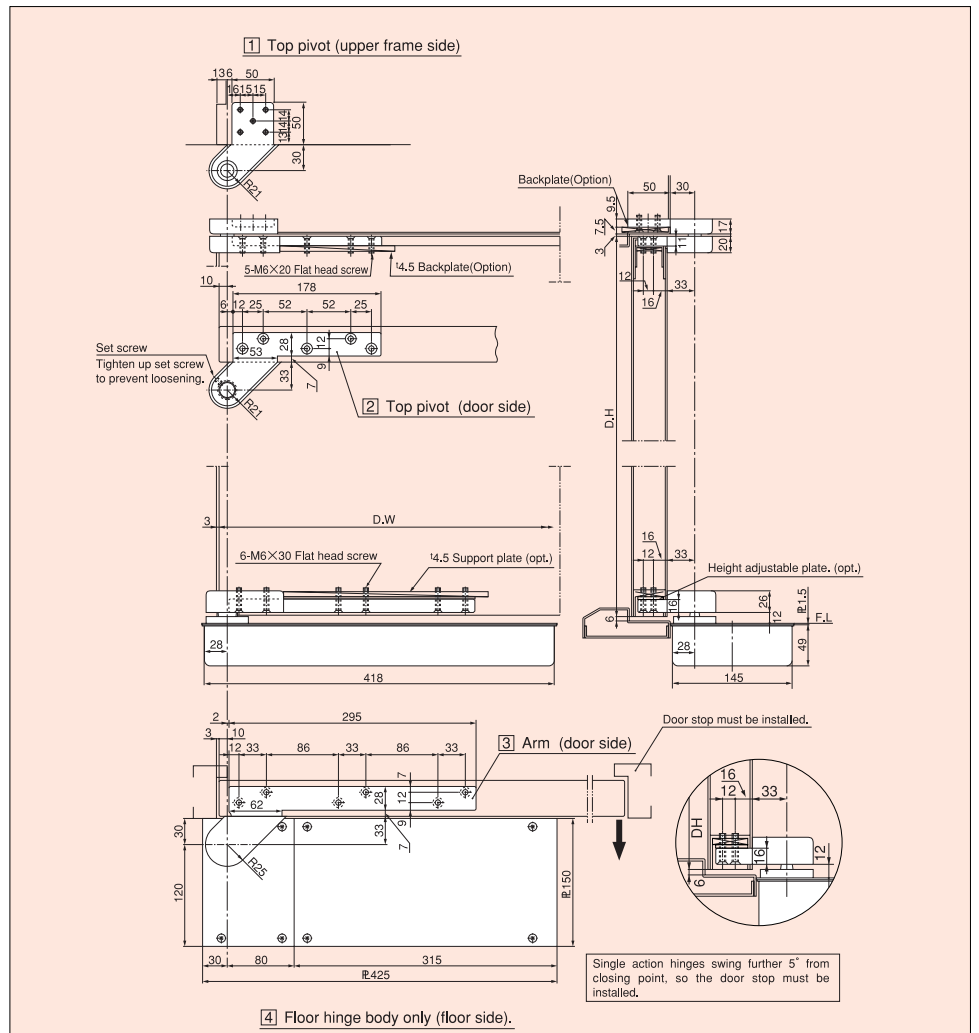
Speed control valve No.2

# 542K·543K 544K·545K

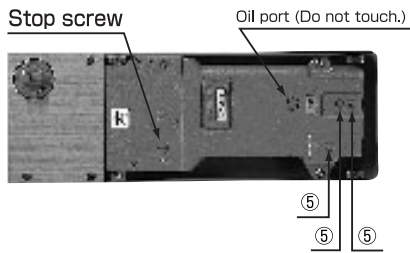


- ① Door closure position adjusting screw
- ② Door closure position adjusting screw
- ③ Door moving direction adjusting screw
- ④ Door moving direction adjusting screw
- ⑤ Door closing speed adjusting valve

Model	Maximum Door Width×Height (mm)	Weight (kg)
542K	950×2,100	70
543K	1,050×2,200	110
544K	1,200×2,300	150
545K	1,600×2,400	185

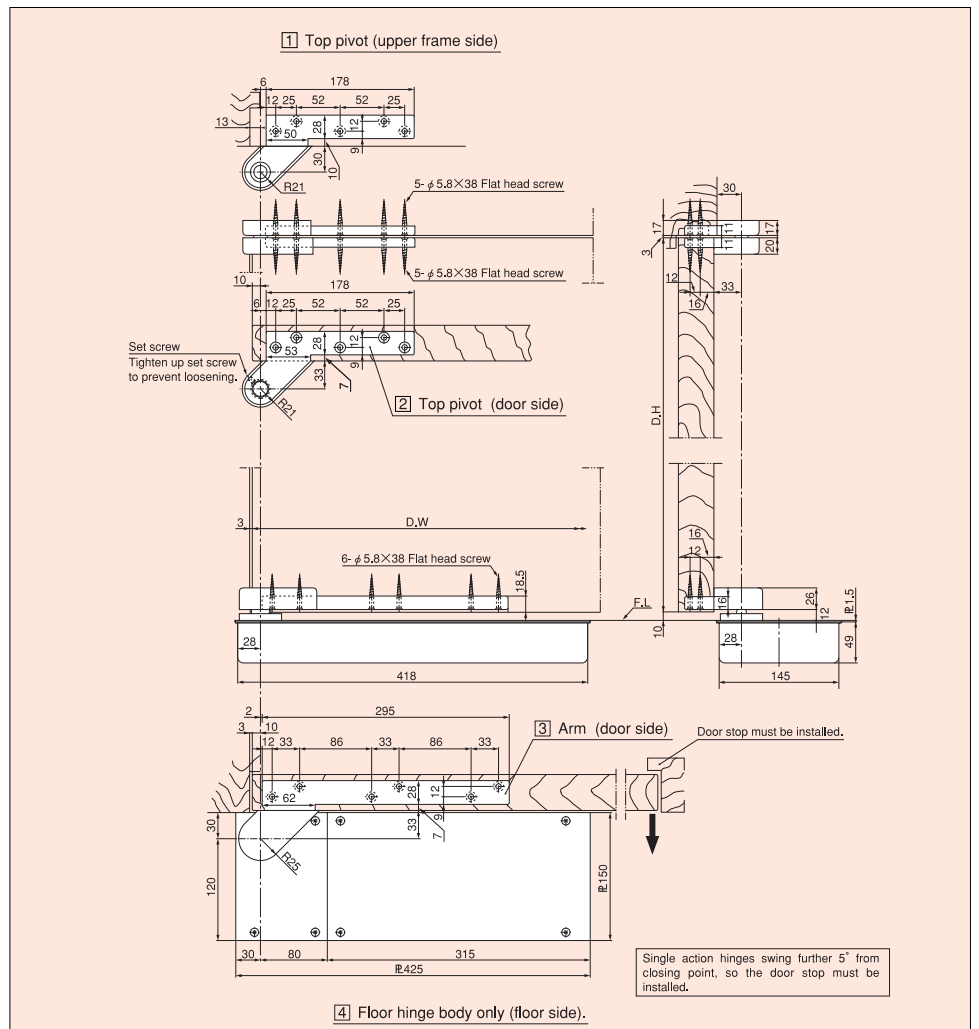


# W542K·W543K

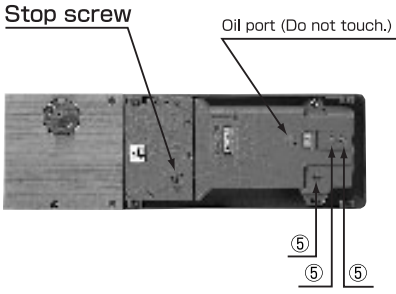


- ① Door closure position adjusting screw
- ② Door closure position adjusting screw
- ③ Door moving direction adjusting screw
- ④ Door moving direction adjusting screw
- ⑤ Door closing speed adjusting valve

Model	Maximum Door Width×Height (mm)	Weight (kg)
W542K	950×2,100	70
W543K	1,050×2,200	110

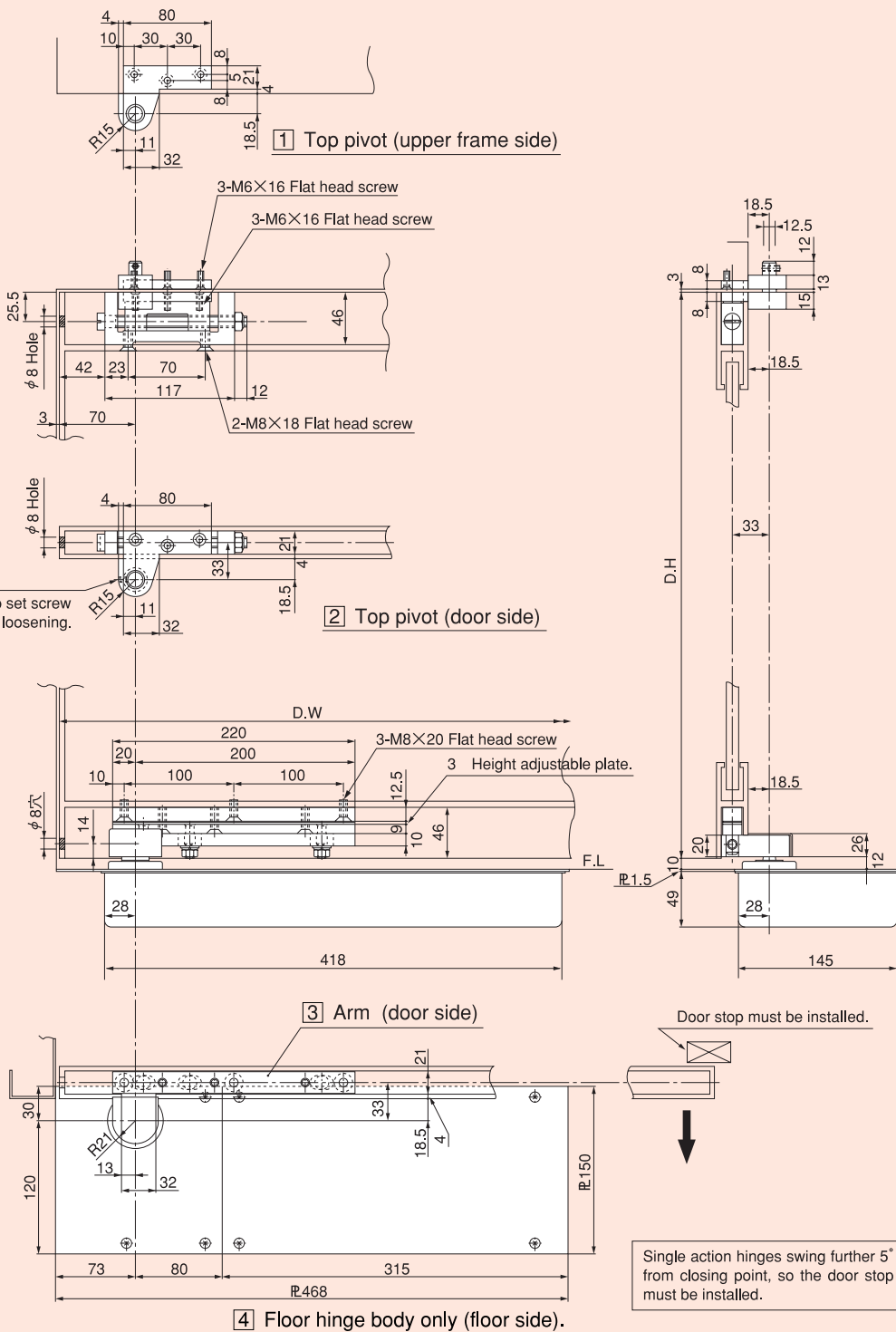


# 1543K

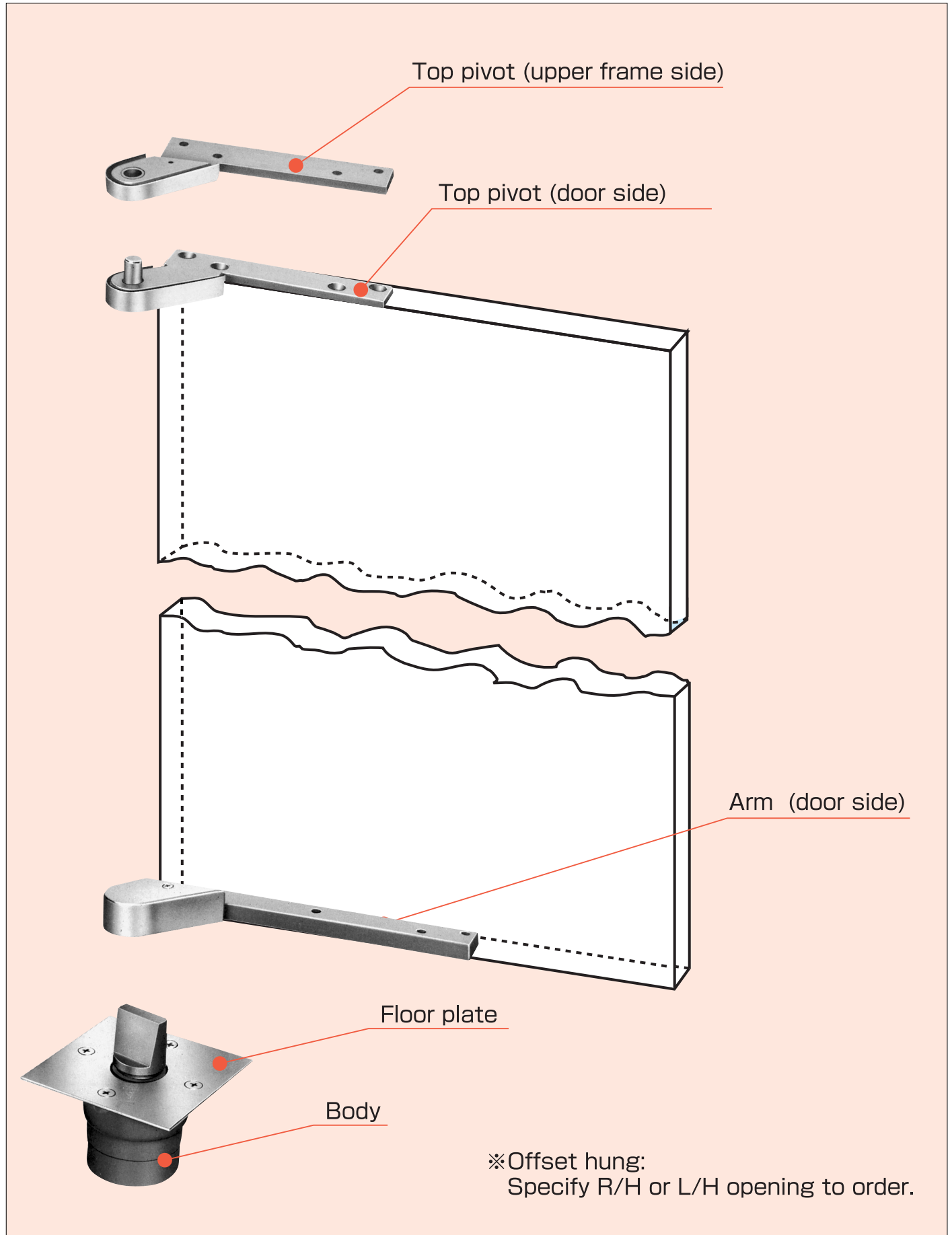


- ① Door closure position adjusting screw
- ② Door closure position adjusting screw
- ③ Door moving direction adjusting screw
- ④ Door moving direction adjusting screw
- ⑤ Door closing speed adjusting valve

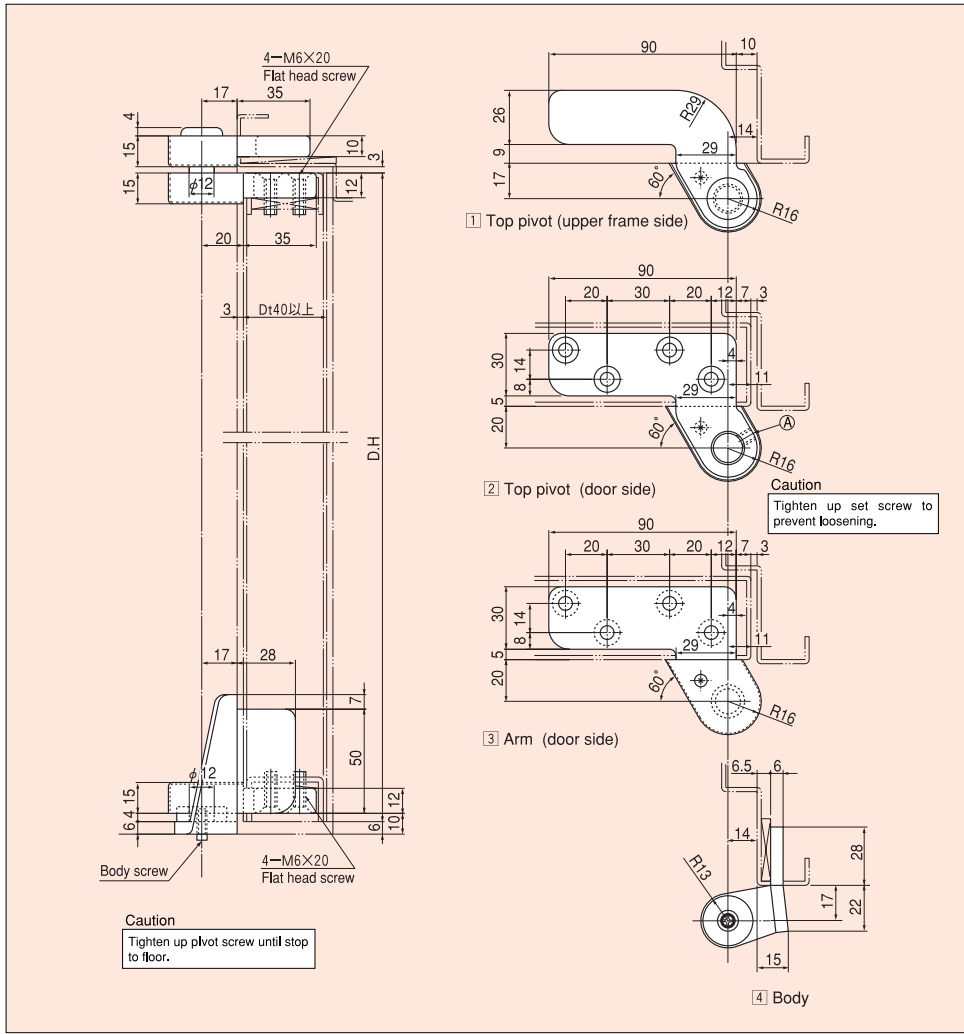
Number	Maximum Door
	Width×Height (mm)
1543K	914×2,134



# PIVOT HINGES

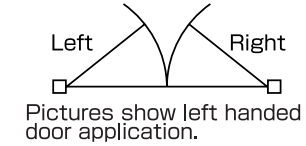




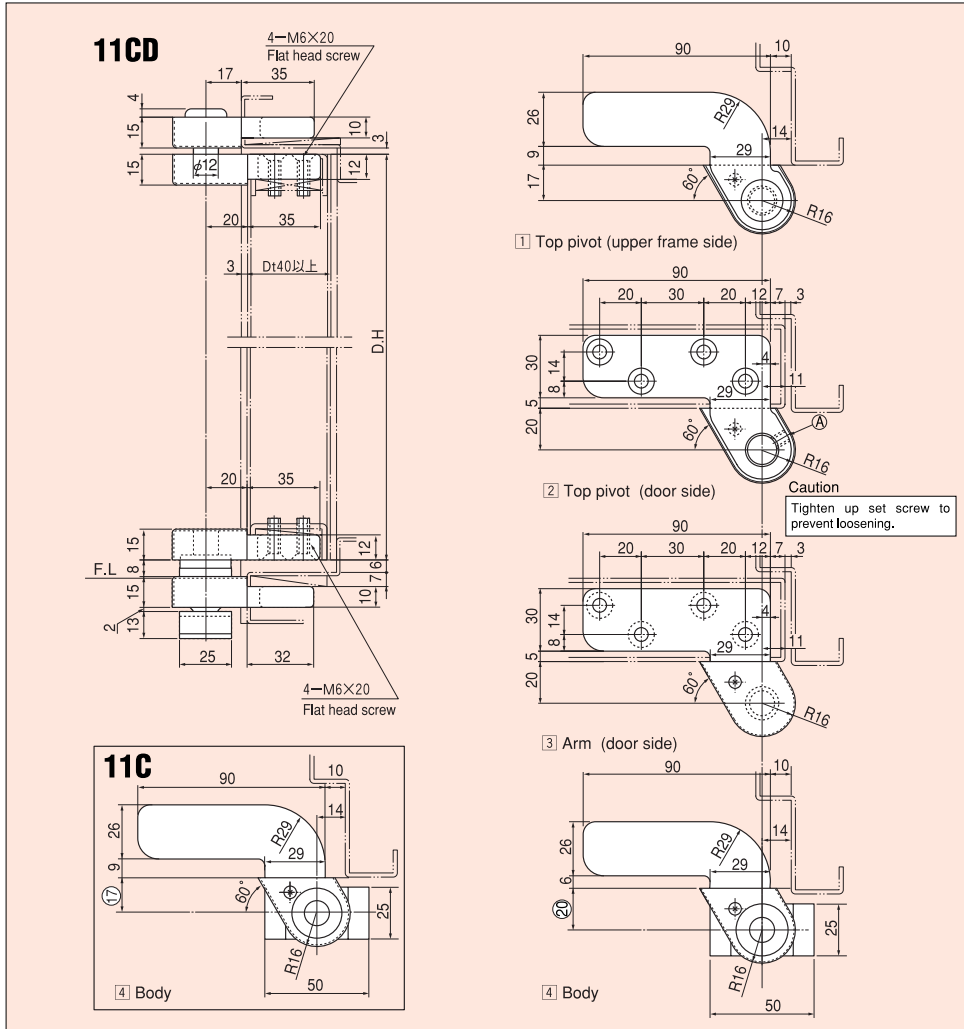


# 11-D

## OFFSET HUNG (Steel Door)

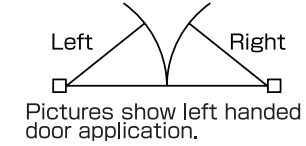


<b>MAXIMUM DOOR</b>	
D.W×D.H (mm)	900×2100
DOOR WEIGHT (kg)	80



# 11CD · 11C

## OFFSET HUNG (Steel Door)



<b>MAXIMUM DOOR</b>	
D.W×D.H (mm)	900×2100
DOOR WEIGHT (kg)	80

# 13CD·13C

OFFSET HUNG  
(Steel Door)

## MAXIMUM DOOR

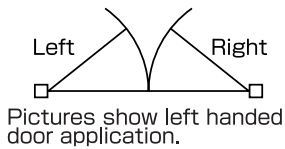
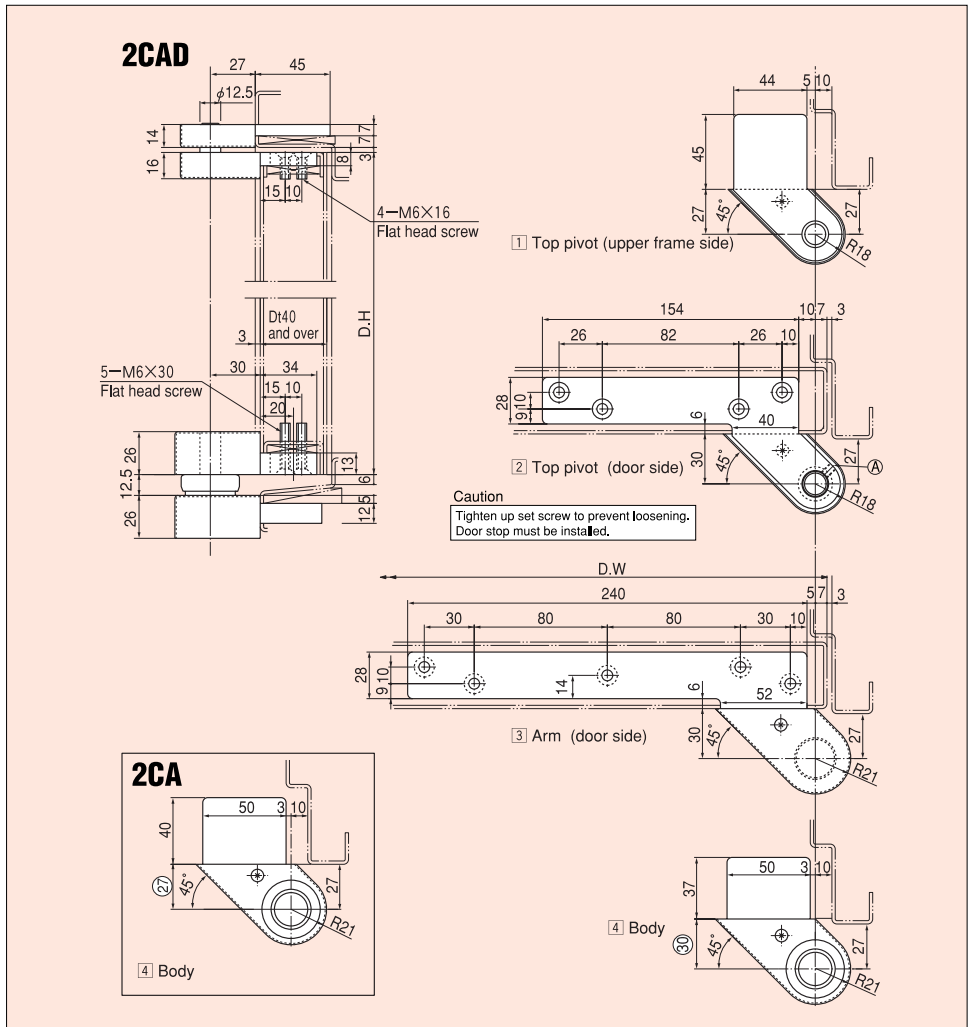
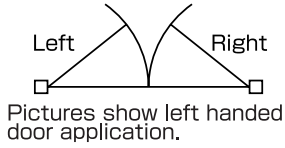
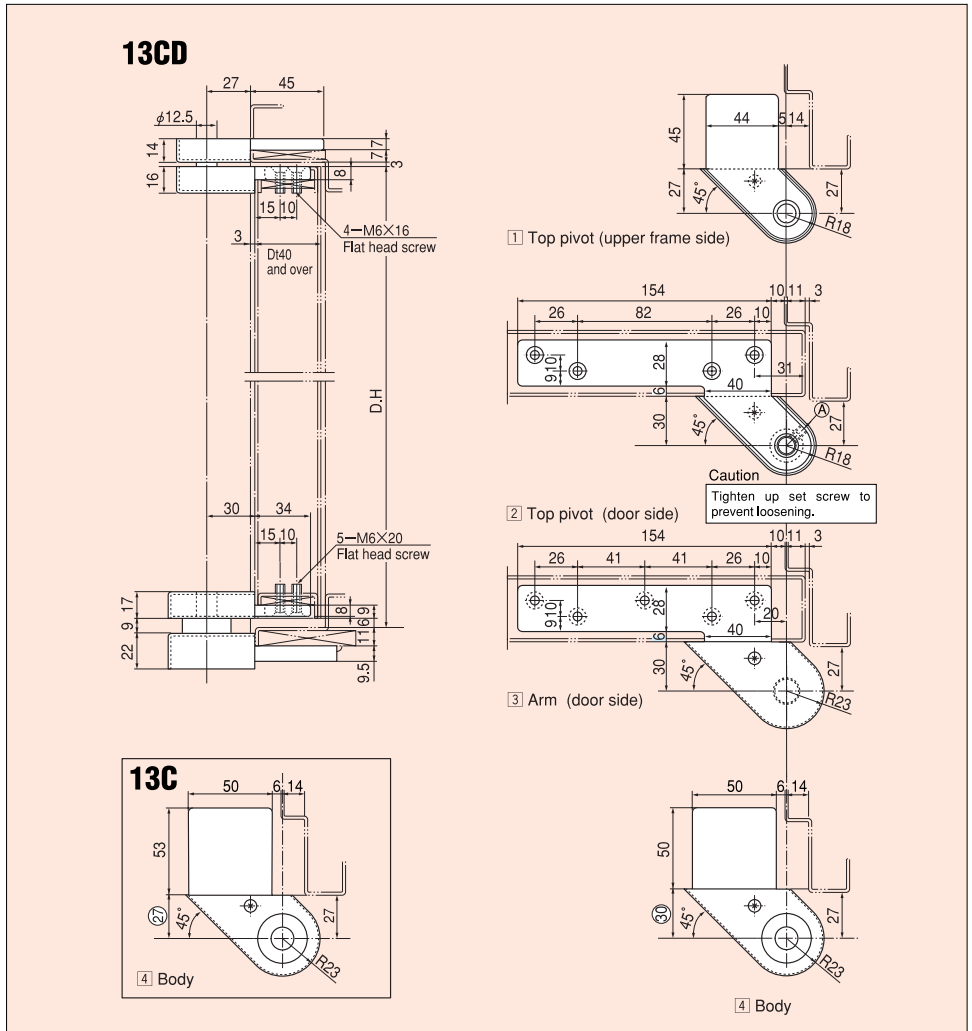
D.W×D.H (mm)	1050×2200
DOOR WEIGHT (kg)	120

# 2CAD·2CA

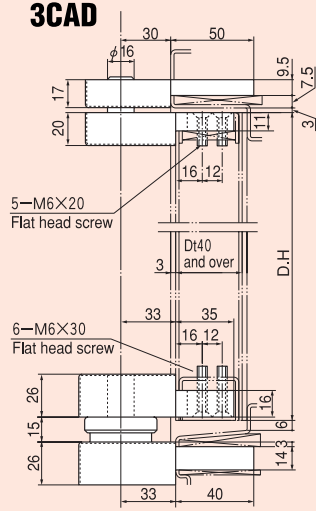
OFFSET HUNG  
(Steel Door)

## MAXIMUM DOOR

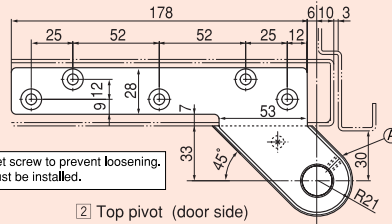
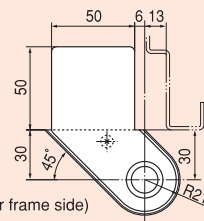
D.W×D.H (mm)	1500×2400
DOOR WEIGHT (kg)	180



### 3CAD

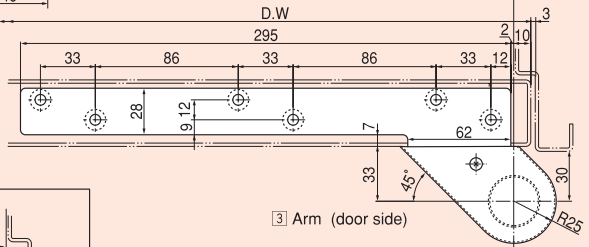


1 Top pivot (upper frame side)



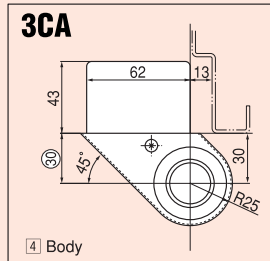
2 Top pivot (door side)

**Caution**  
Tighten up set screw to prevent loosening.  
Door stop must be installed.



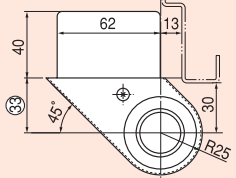
3 Arm (door side)

### 3CA



4 Body

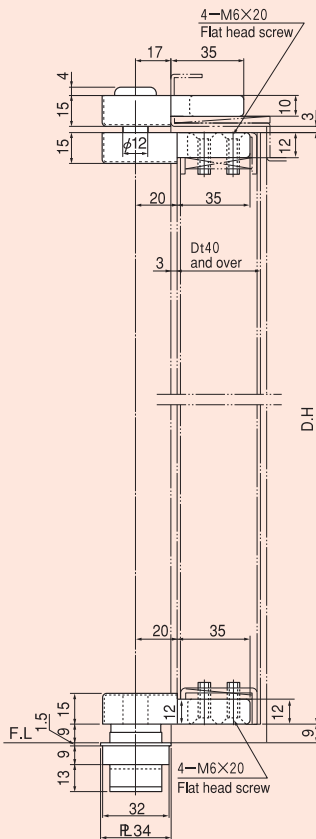
4 Body



Pictures show left handed door application.

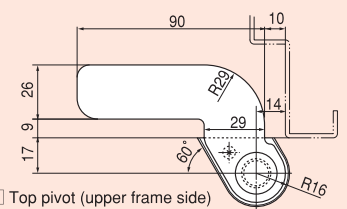
#### MAXIMUM DOOR

D.W×D.H (mm)	1800×3000
DOOR WEIGHT (kg)	300

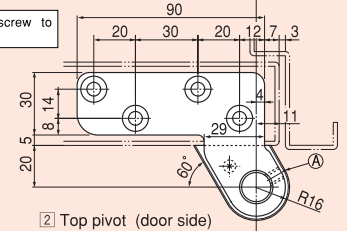


1 Top pivot (upper frame side)

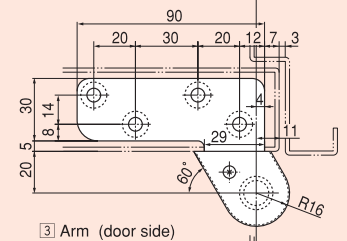
**Caution**  
Tighten up set screw to prevent loosening.



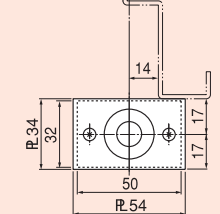
2 Top pivot (door side)



3 Arm (door side)



4 Body



Pictures show left handed door application.

#### MAXIMUM DOOR

D.W×D.H (mm)	900×2100
DOOR WEIGHT (kg)	80

# 13B

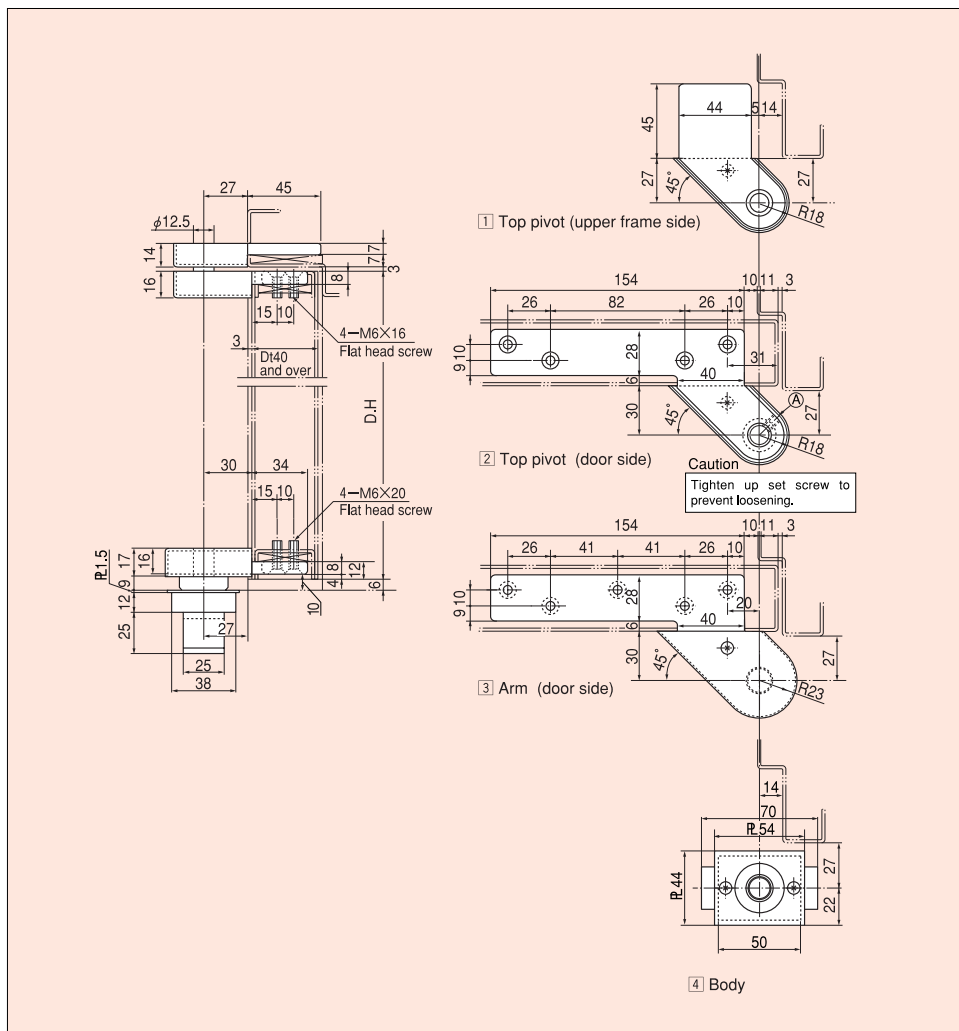
## OFFSET HUNG (Steel Door)



Pictures show left handed door application.

### ■ MAXIMUM DOOR

D.W×D.H (mm)	1050×2200
DOOR WEIGHT (kg)	120



# 2BC·2B

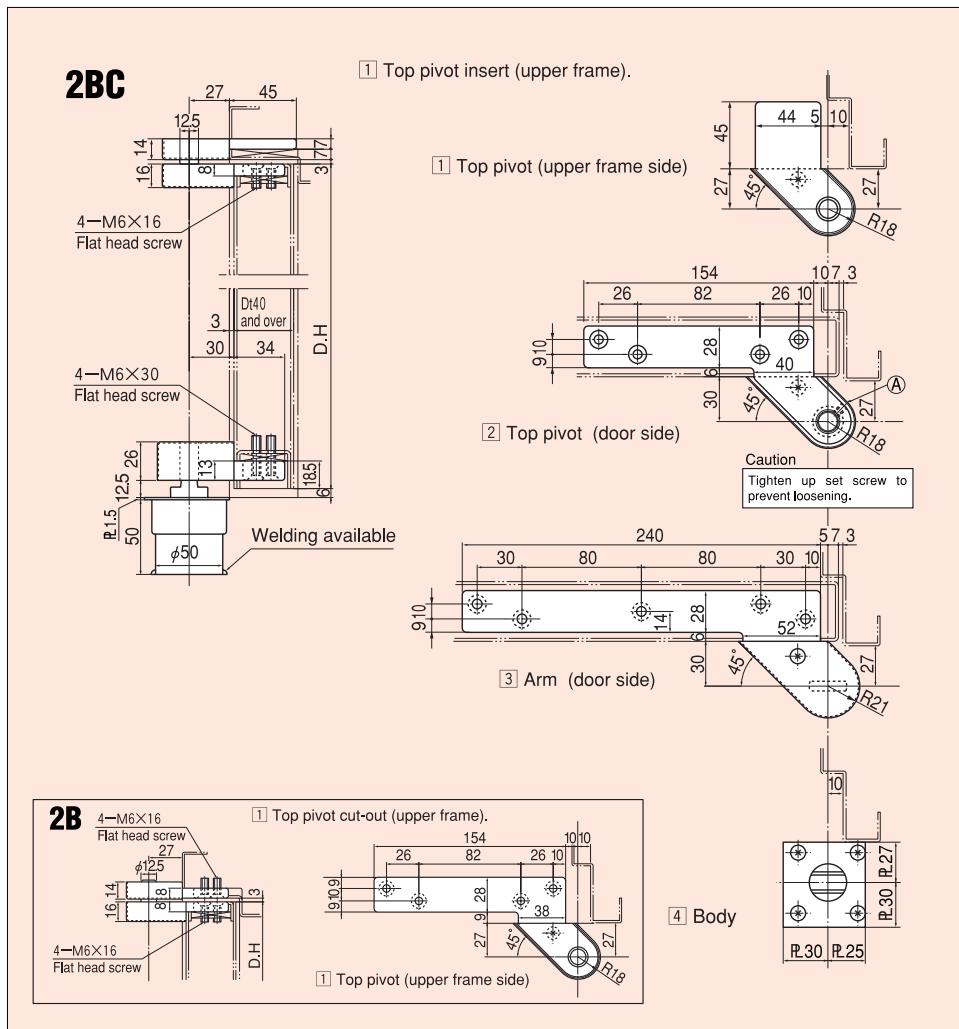
## OFFSET HUNG (Steel Door)



Pictures show left handed door application.

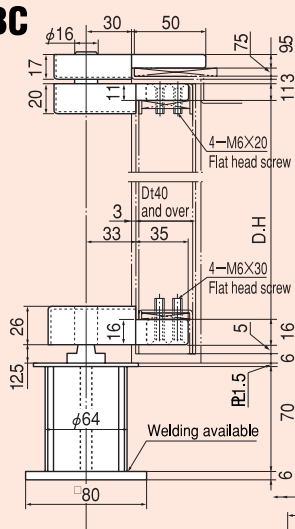
### ■ MAXIMUM DOOR

D.W×D.H (mm)	1500×2400
DOOR WEIGHT (kg)	180

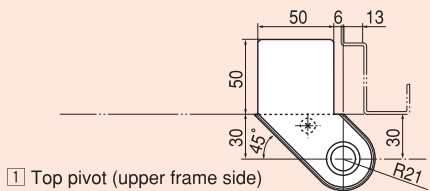




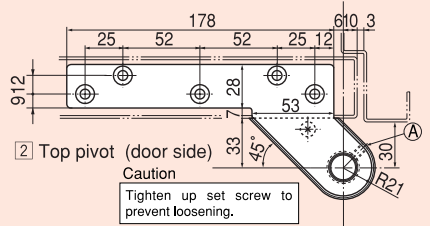
# 3BC



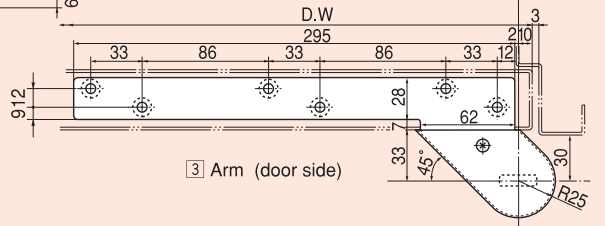
1 Top pivot insert (upper frame).



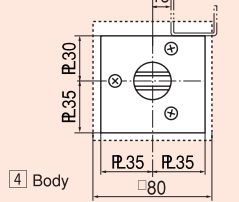
1 Top pivot (upper frame side)



2 Top pivot (door side)  
Caution  
Tighten up set screw to prevent loosening.

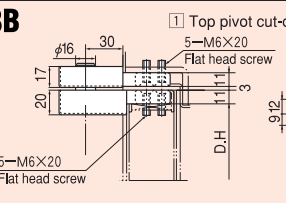


3 Arm (door side)

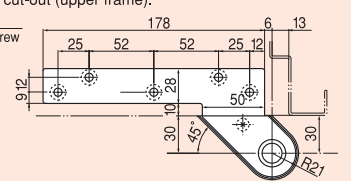


4 Body

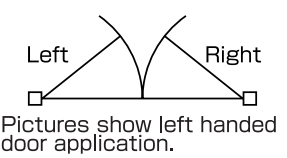
# 3B



1 Top pivot cut-out (upper frame).



1 Top pivot cut-out (upper frame)

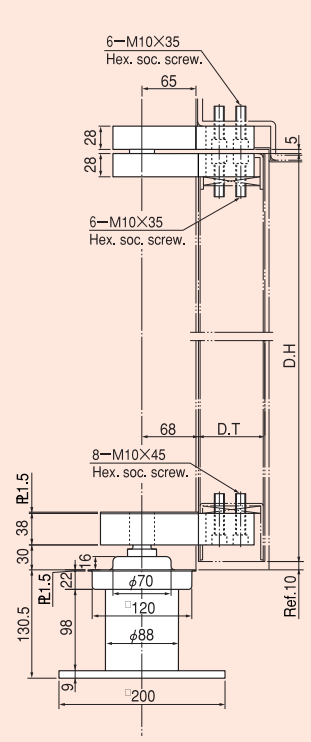


## MAXIMUM DOOR

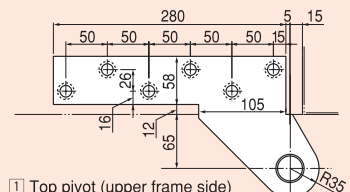
D.W×D.H (mm)	1800×3000
DOOR WEIGHT (kg)	300

# S-4B

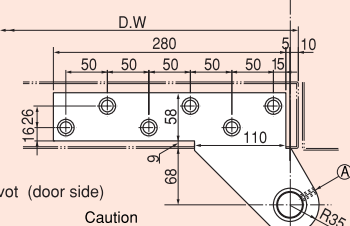
## OFFSET HUNG (Steel Door)



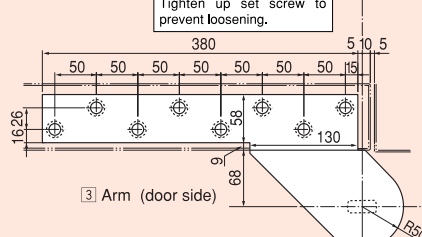
\* Parts supplied to order.  
\* Consult for the delivery time.



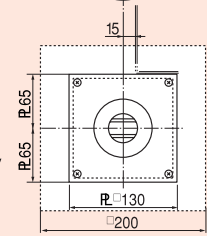
1 Top pivot (upper frame side)



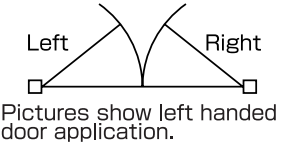
2 Top pivot (door side)  
Caution  
Tighten up set screw to prevent loosening.



3 Arm (door side)



4 Body



## MAXIMUM DOOR

D.W×D.H (mm)	4000×5000
DOOR WEIGHT (kg)	1000

# SW-11D

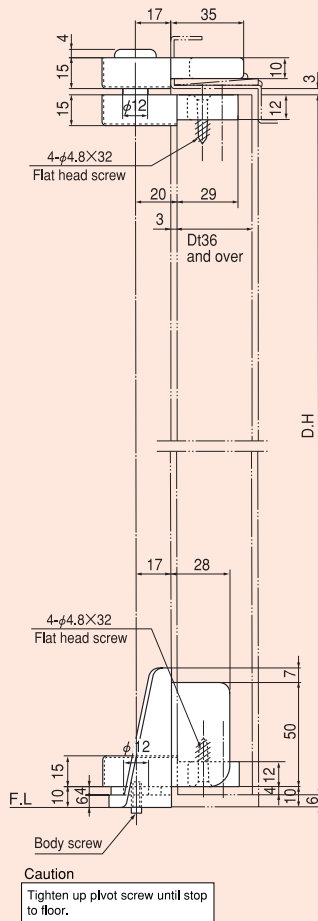
OFFSET HUNG  
(Steel Door)



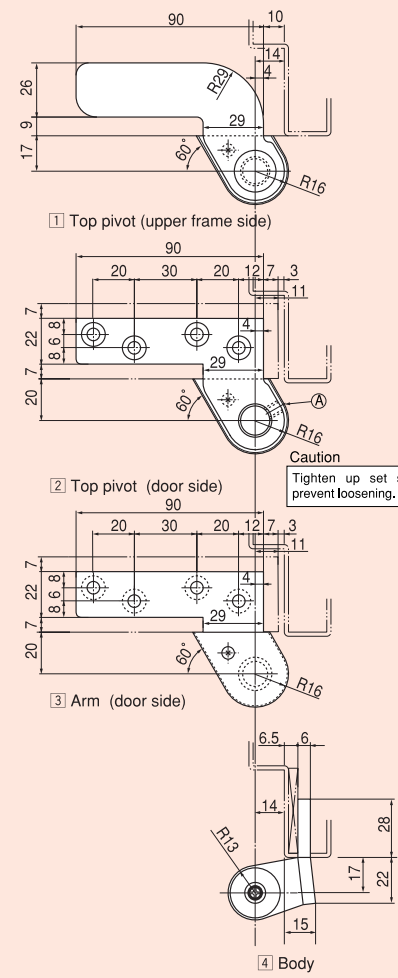
Pictures show left handed door application.

## MAXIMUM DOOR

D.W×D.H (mm)	900×2200
DOOR WEIGHT (kg)	80



Caution  
Tighten up pivot screw until stop to floor.



Caution  
Tighten up set screw to prevent loosening.

# SW-11CD·SW-11C

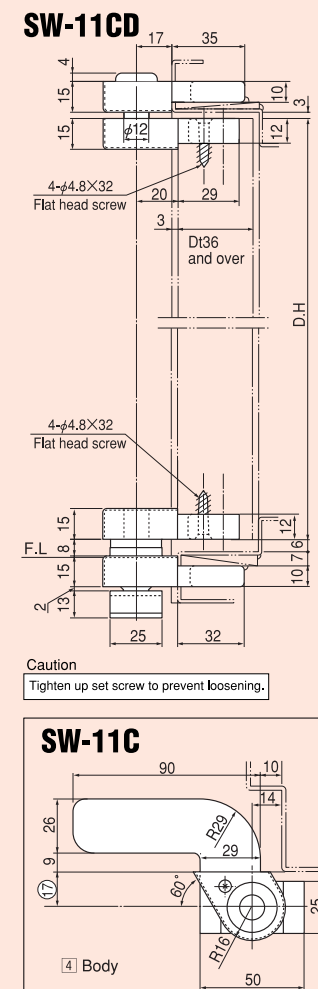
OFFSET HUNG  
(Steel Door)



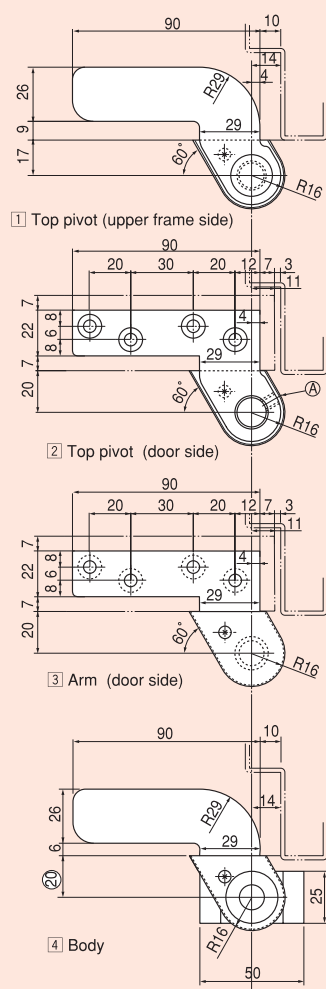
Pictures show left handed door application.

## MAXIMUM DOOR

D.W×D.H (mm)	900×2100
DOOR WEIGHT (kg)	80



Caution  
Tighten up set screw to prevent loosening.

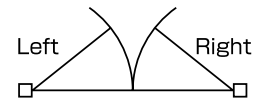
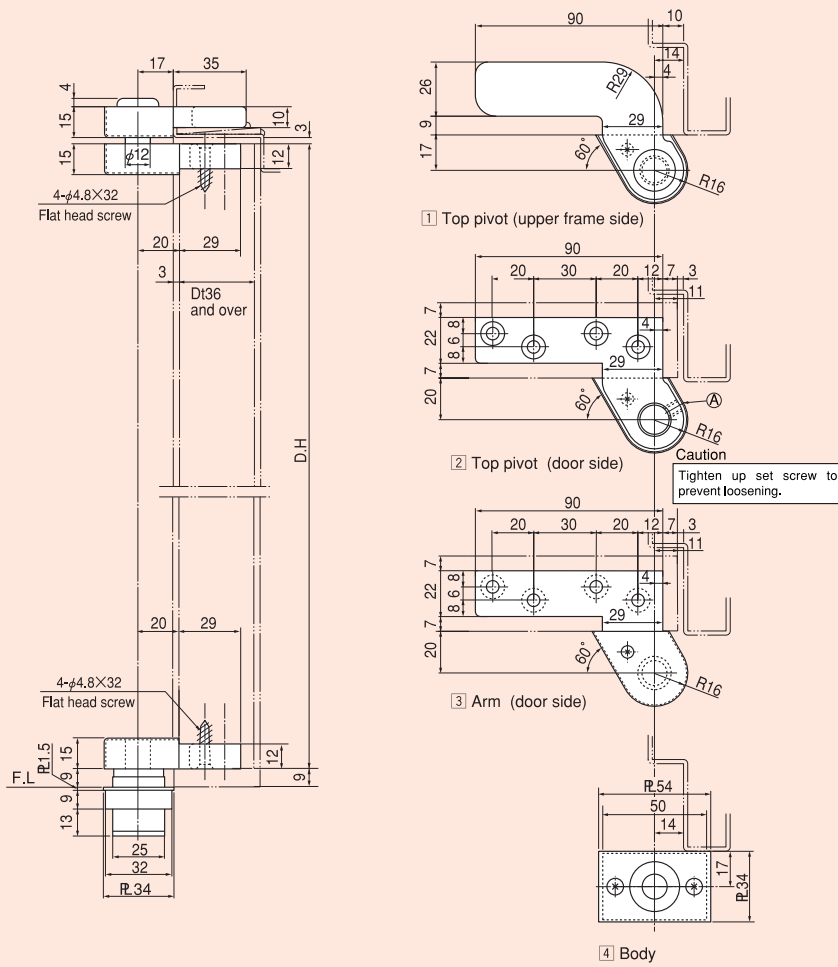


4 Body

4 Body

# SW-11B

## OFFSET HUNG (Steel Door)



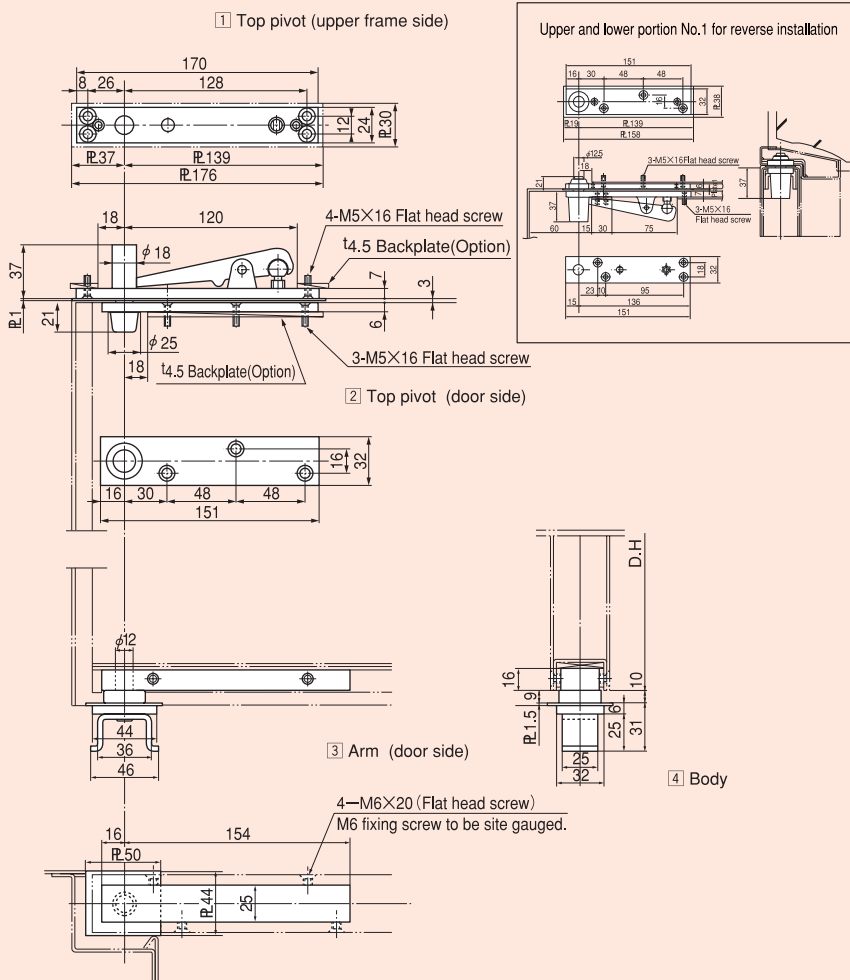
Pictures show left handed door application.

### MAXIMUM DOOR

D.W×D.H (mm)	900×2100
DOOR WEIGHT (kg)	80

# S-1AF

## CENTER HUNG (Steel Door)

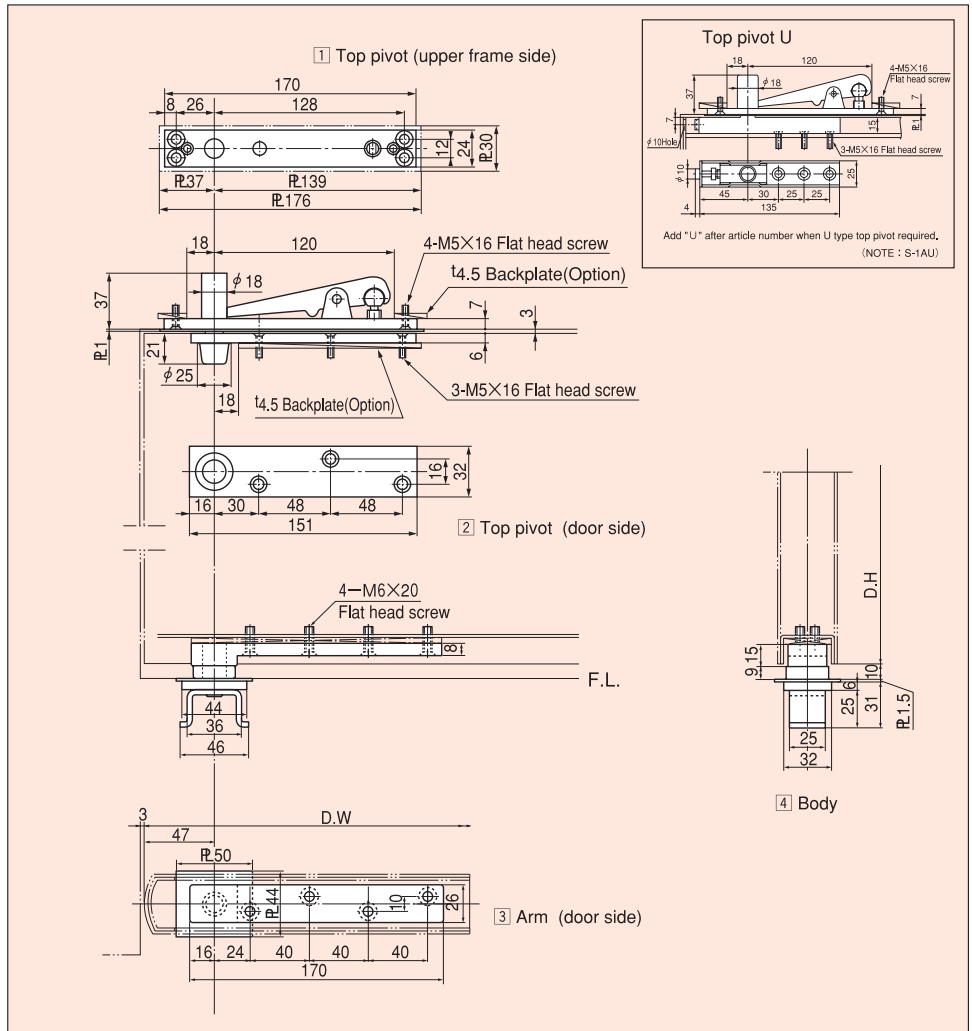


### MAXIMUM DOOR

D.W×D.H (mm)	900×2100
DOOR WEIGHT (kg)	100

# S-1A

## CENTER HUNG

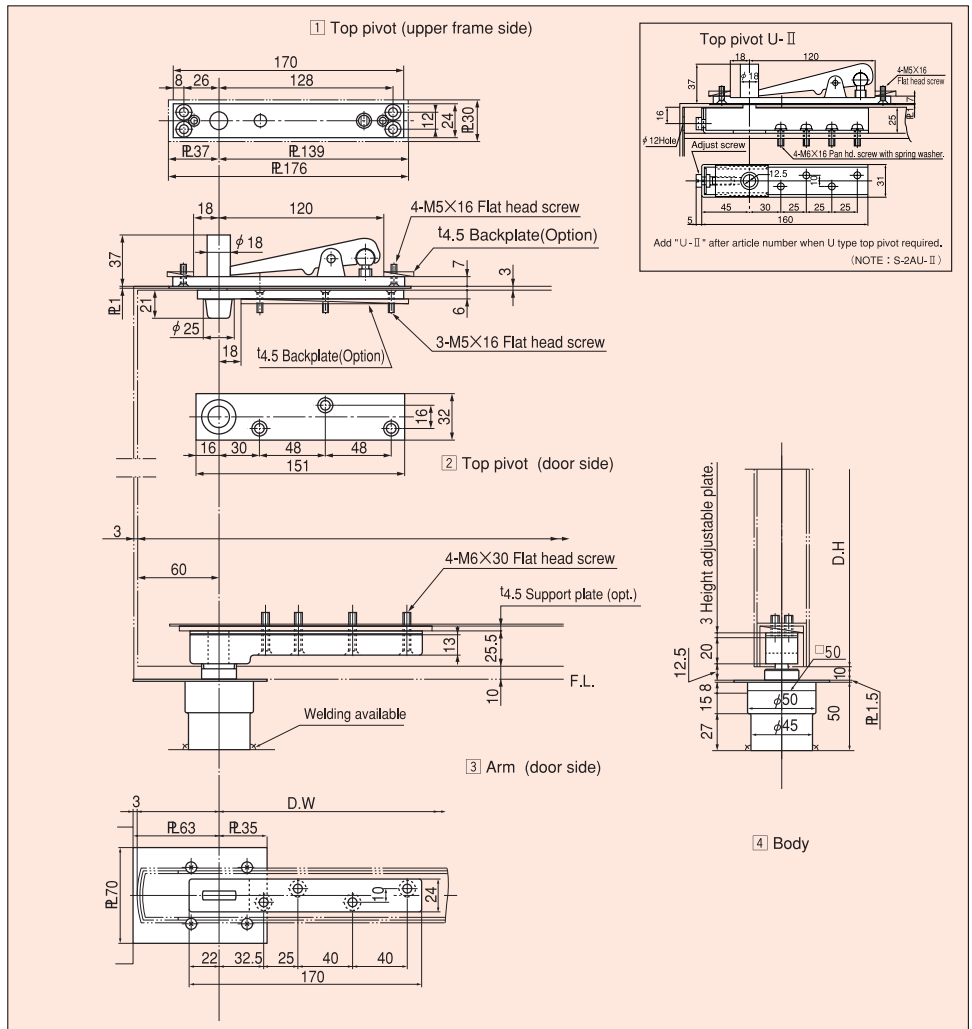


### MAXIMUM DOOR

D.W×D.H (mm)	900×2100
DOOR WEIGHT (kg)	100

# S-2A

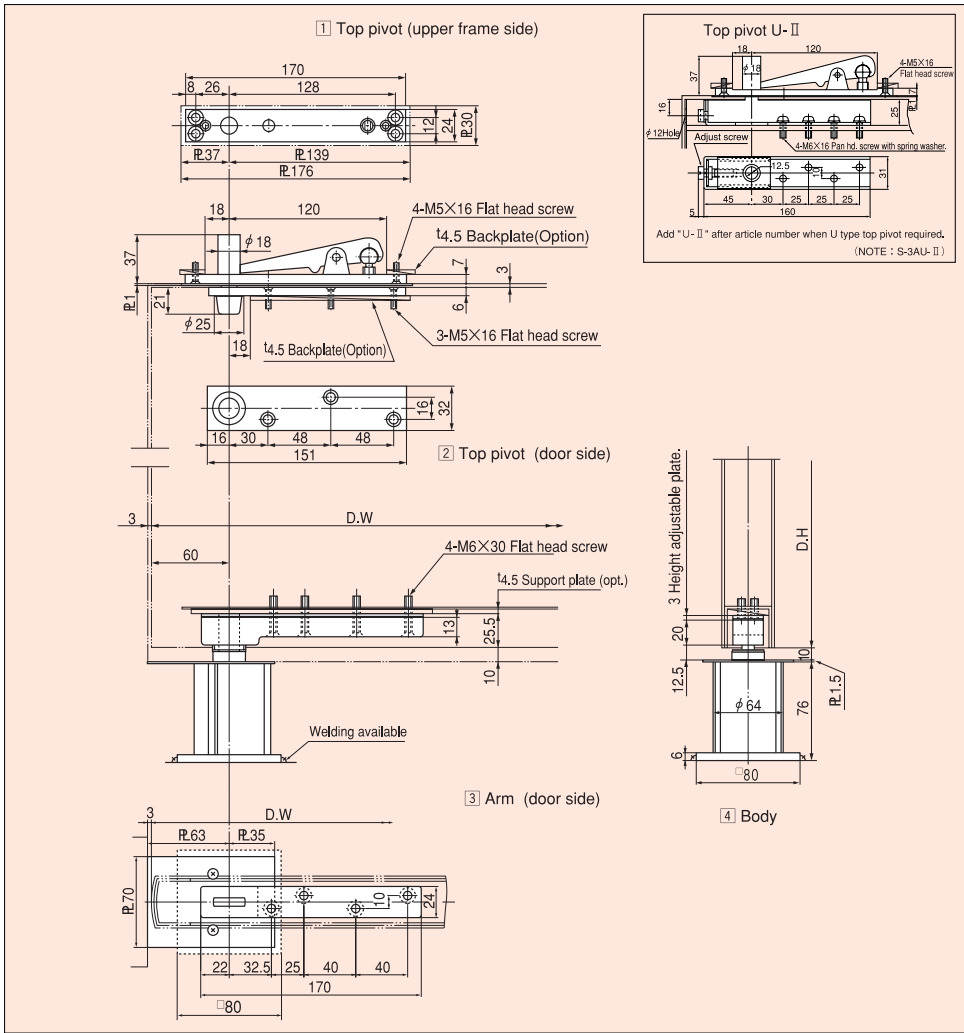
## CENTER HUNG



### MAXIMUM DOOR

D.W×D.H (mm)	1500×2400
DOOR WEIGHT (kg)	180



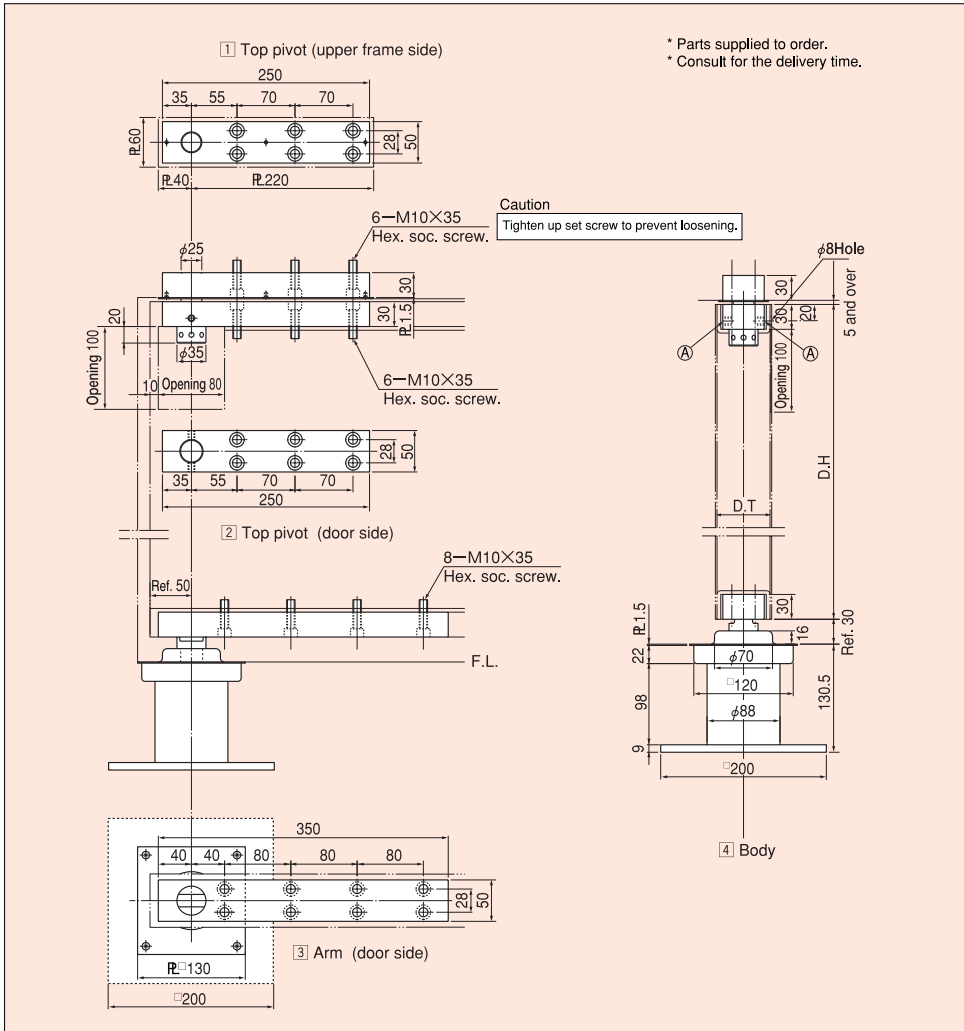


# S-3A

## CENTER HUNG

### MAXIMUM DOOR

D.W×D.H (mm)	1800×3000
DOOR WEIGHT (kg)	300



# S-4A

## CENTER HUNG

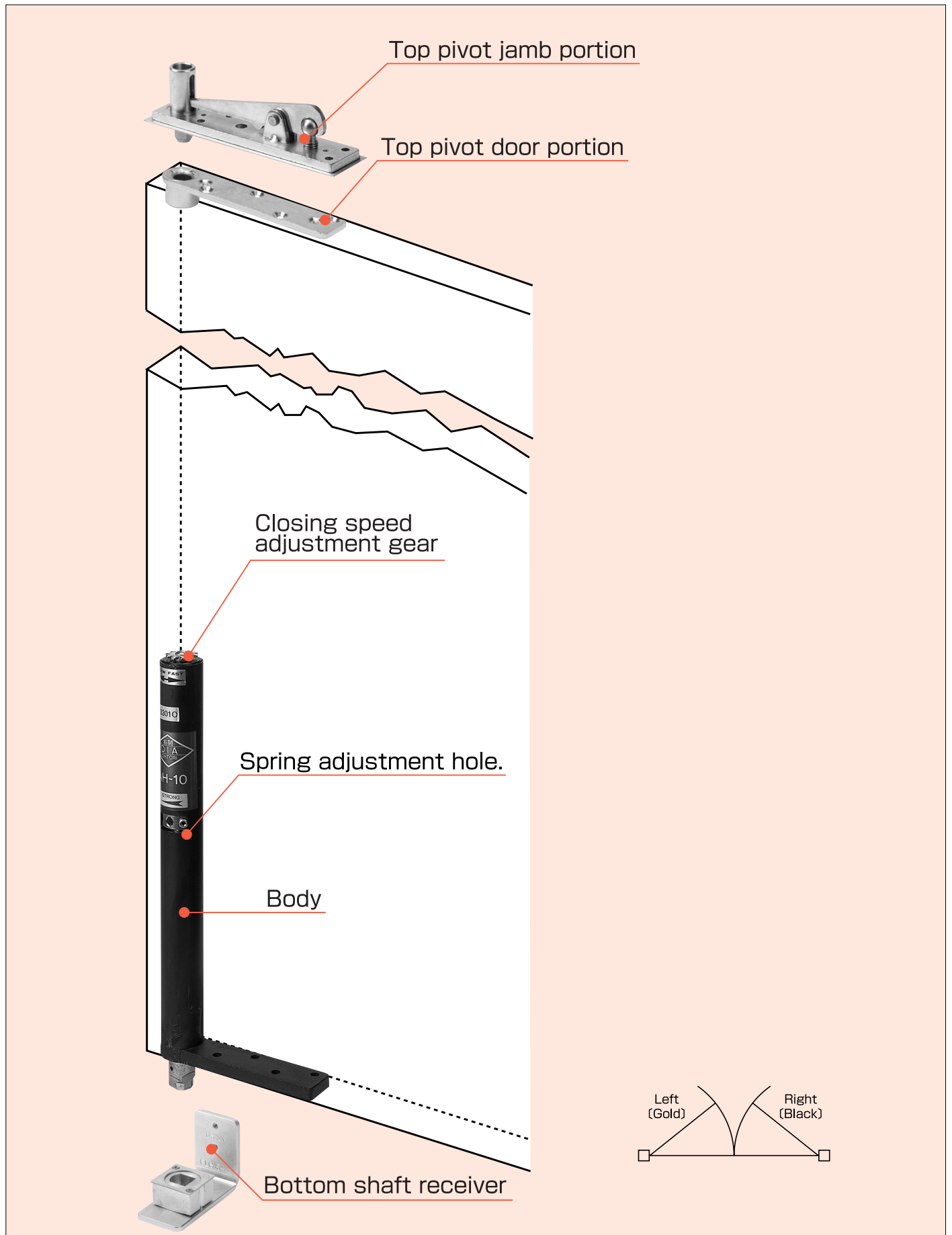
### MAXIMUM DOOR

D.W×D.H (mm)	4000×5000
DOOR WEIGHT (kg)	1000

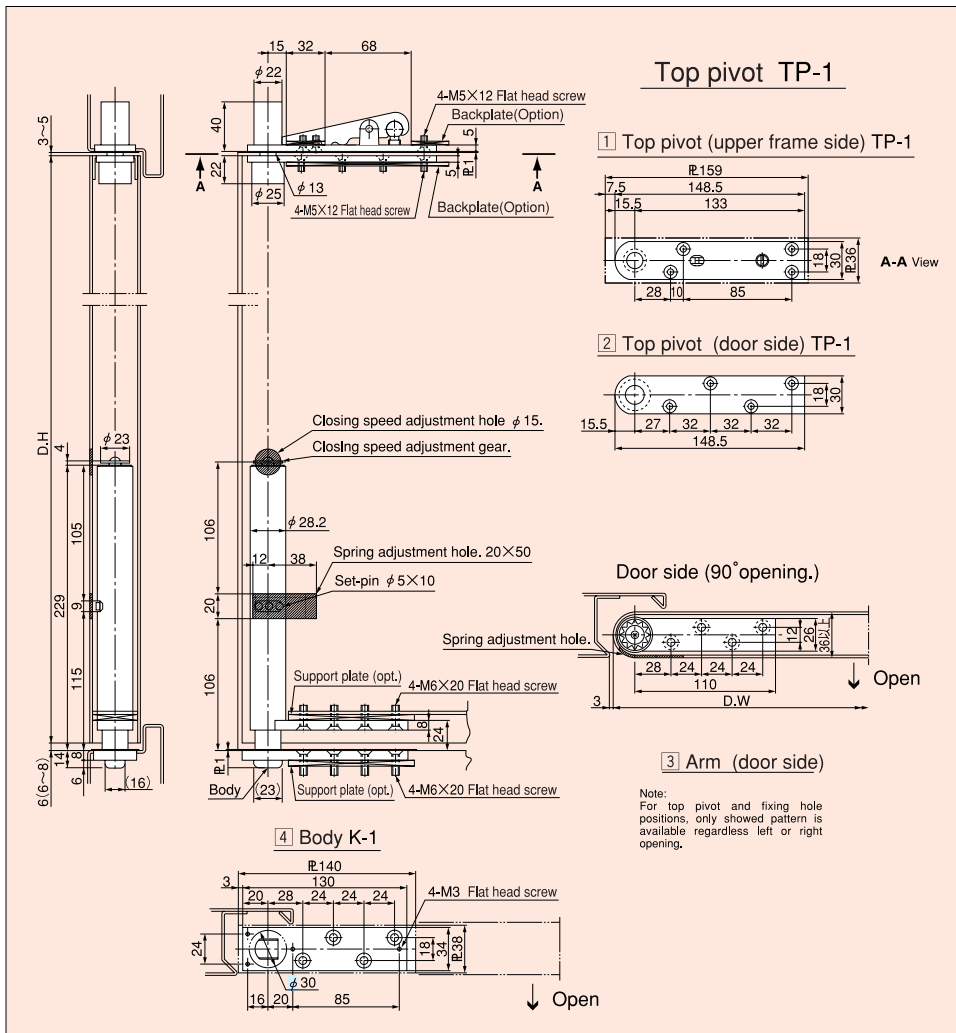
# AUTO HINGES



## CONCEALED type CENTER HUNG Single Action



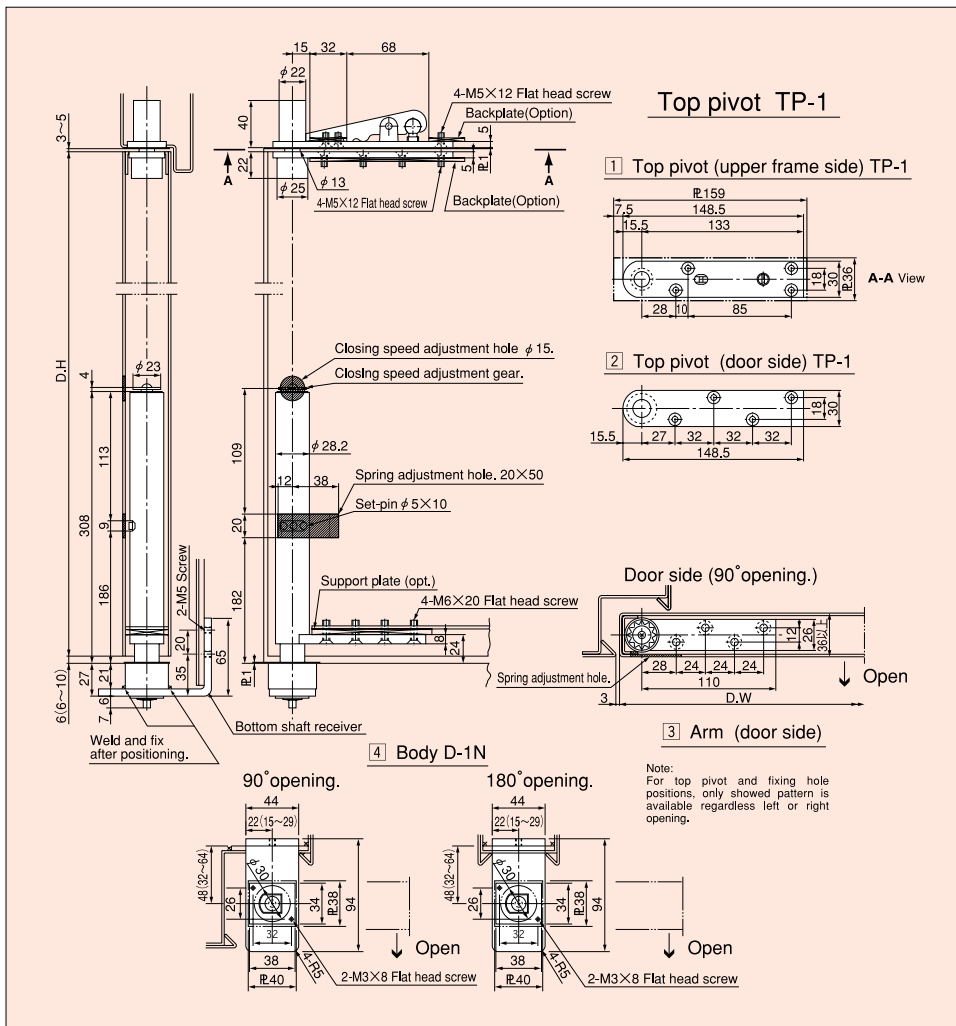
# AH-8K WICKET DOOR



### Notes:

1. Illustration refers to right opening.
2. Top pivot refers to standard applications. Specify upside-down top pivot if necessary.
3. Use standard supplied rubber caps to closing force and spring adjustment holes.
4. Door stop must be installed.
5. At pre-set installation, cut-out for spring adjustment hole is unnecessary.
6. Fix the round part of [4] pivot seat groove to hanging side.

Number	Model	Maximum Door Width
AH-8KL	CENTER HUNG	W=800mm
AH-8KR		H=1850mm D=36mm and above
Maximum Door Weight	Open	Hold open
40Kg	180° One side opening	—



# AH-8

### Notes:

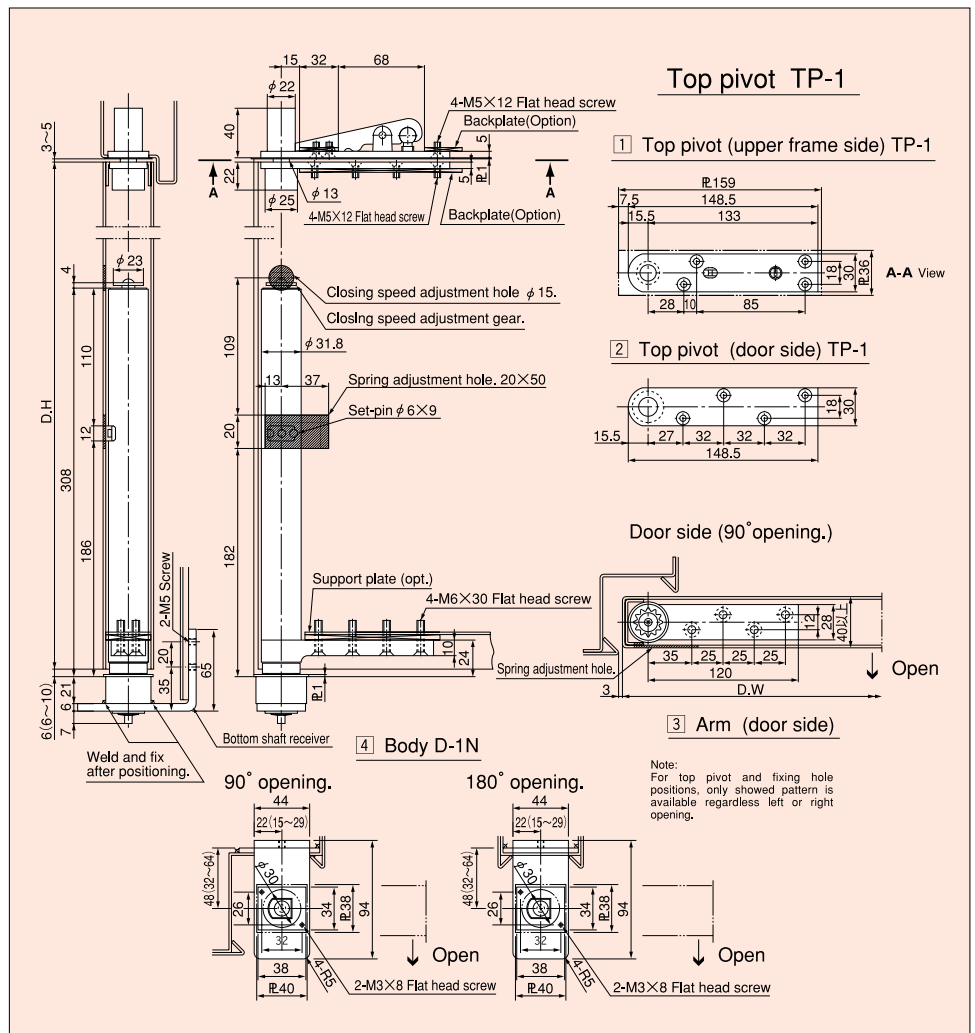
1. Illustration refers to right opening.
2. Use plumb down from top pivot, and adjust center of the pivot seat sliding, and then weld securely.
3. Use standard supplied rubber caps to closing force and spring adjustment holes.
4. Door stop must be installed.
5. Pre-set installation also becomes possible after pivot seat has been welded.
6. Fix the round part of [4] pivot seat groove to hanging side.
7. Body [3] must be fastened with screws. Do not weld temporarily.
8. For top pivot and fixing hole positions, only showed pattern is available regardless left or right opening.
9. At reverse applications, remove seal covering spring adjustment hole and exchange the set pin.

Number	Model	Maximum Door Width
AH-8L	CENTER HUNG	W=800mm
AH-8R		H=2000mm D=36mm and above
Maximum Door Weight	Open	Hold open
50Kg	180° One side opening	—

# AH-10 AH-12

- Notes:
1. Illustration refers to right opening.
  2. Use plumb down from top pivot, and adjust center of the pivot seat sliding, and then weld securely.
  3. Use standard supplied rubber caps to closing force and spring adjustment holes.
  4. Door stop must be installed.
  5. Pre-set installation also becomes possible after pivot seat has been welded.
  6. Fix the round part of [4] pivot seat groove to hanging side.
  7. Body [3] must be fastened with screws. Do not weld temporarily.
  8. For top pivot and fixing hole positions, only showed pattern is available regardless left or right opening.
  9. At reverse applications, remove seal covering spring adjustment hole and exchange the set pin.

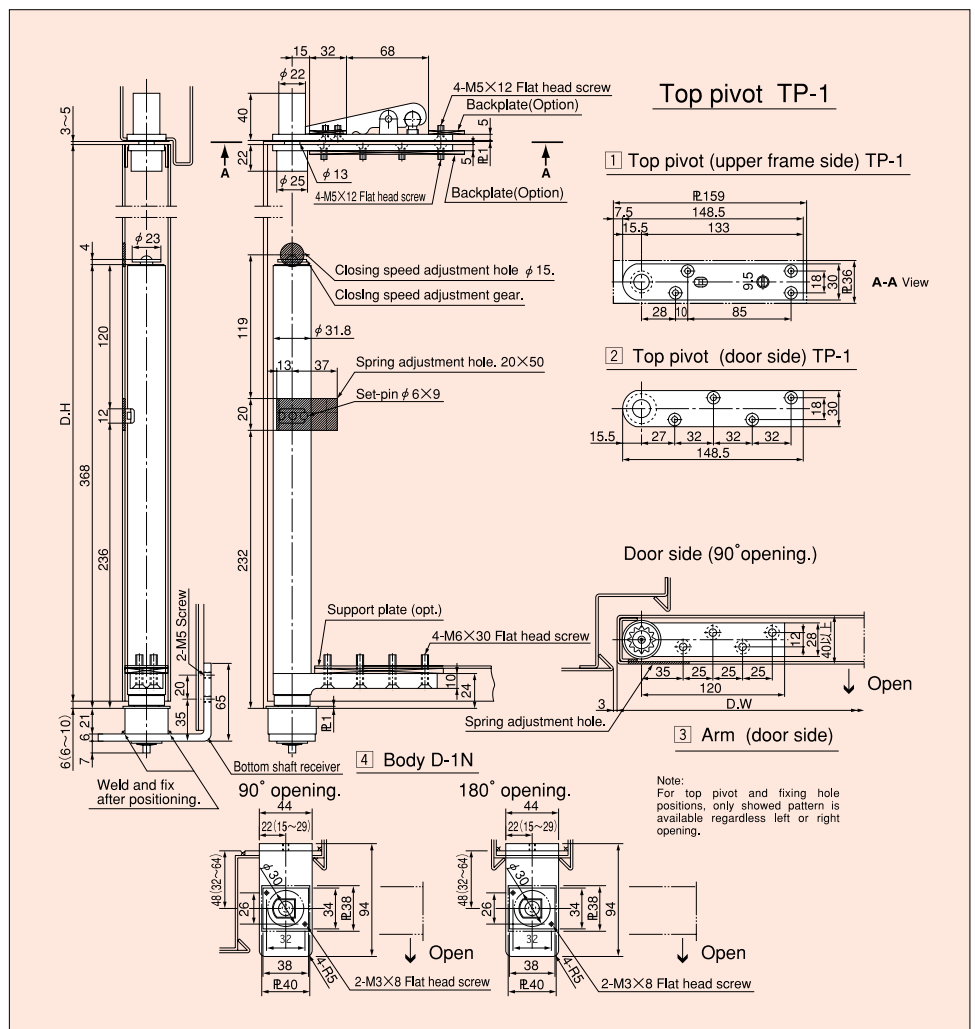
Number	Model	Maximum Door Width
AH-10L	CENTER HUNG	W=1000mm
AH-10R		H=2100mm D=40mm and above
AH-12L	CENTER HUNG	W=1200mm
AH-12R		H=2100mm D=40mm and above
Maximum Door Weight	Open	Hold open
85Kg	180° One side opening	—
100Kg	180° One side opening	—



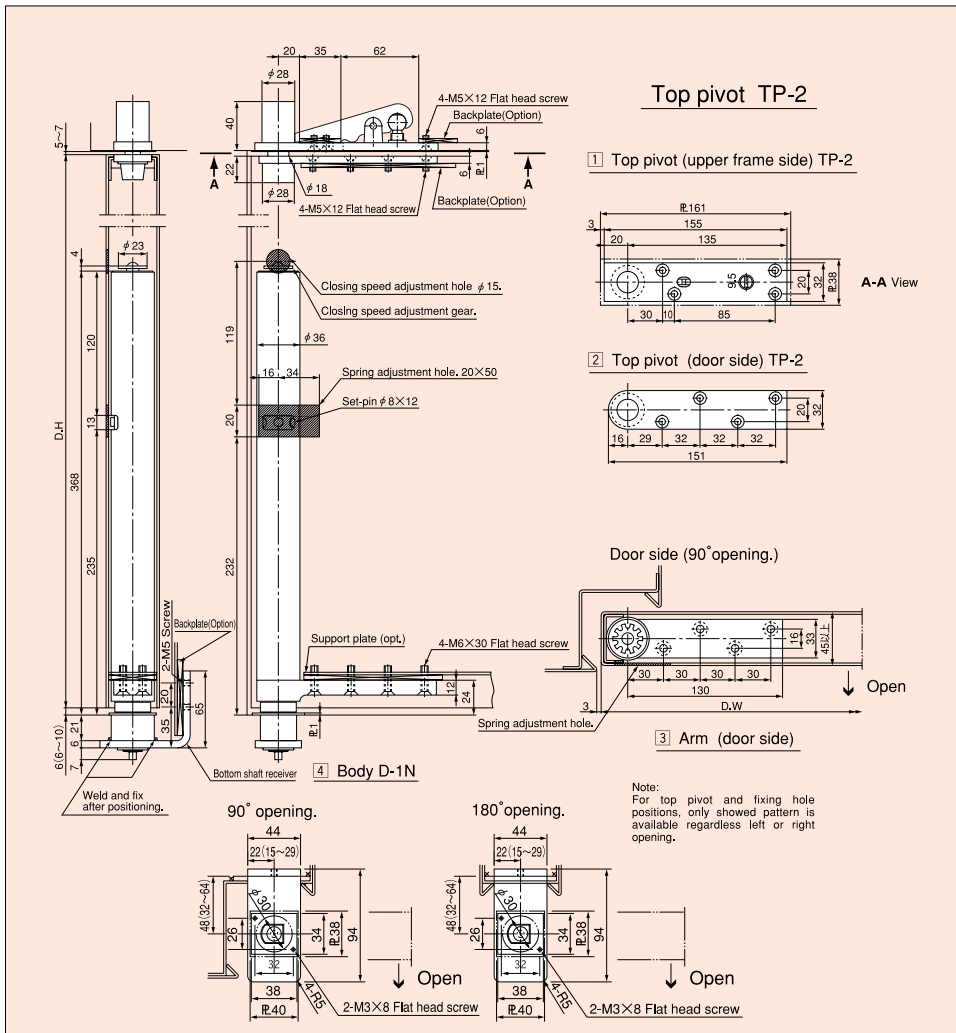
# AH-14

- Notes:
1. Illustration refers to right opening.
  2. Use plumb down from top pivot, and adjust center of the pivot seat sliding, and then weld securely.
  3. Use standard supplied rubber caps to closing force and spring adjustment holes.
  4. Door stop must be installed.
  5. Pre-set installation also becomes possible after pivot seat has been welded.
  6. Fix the round part of [4] pivot seat groove to hanging side.
  7. Body [3] must be fastened with screws. Do not weld temporarily.
  8. For top pivot and fixing hole positions, only showed pattern is available regardless left or right opening.
  9. At reverse applications, remove seal covering spring adjustment hole and exchange the set pin.

Number	Model	Maximum Door Width
AH-14L	CENTER HUNG	W=1400mm
AH-14R		H=2100mm D=40mm and above
Maximum Door Weight	Open	Hold open
130Kg	180° One side opening	—



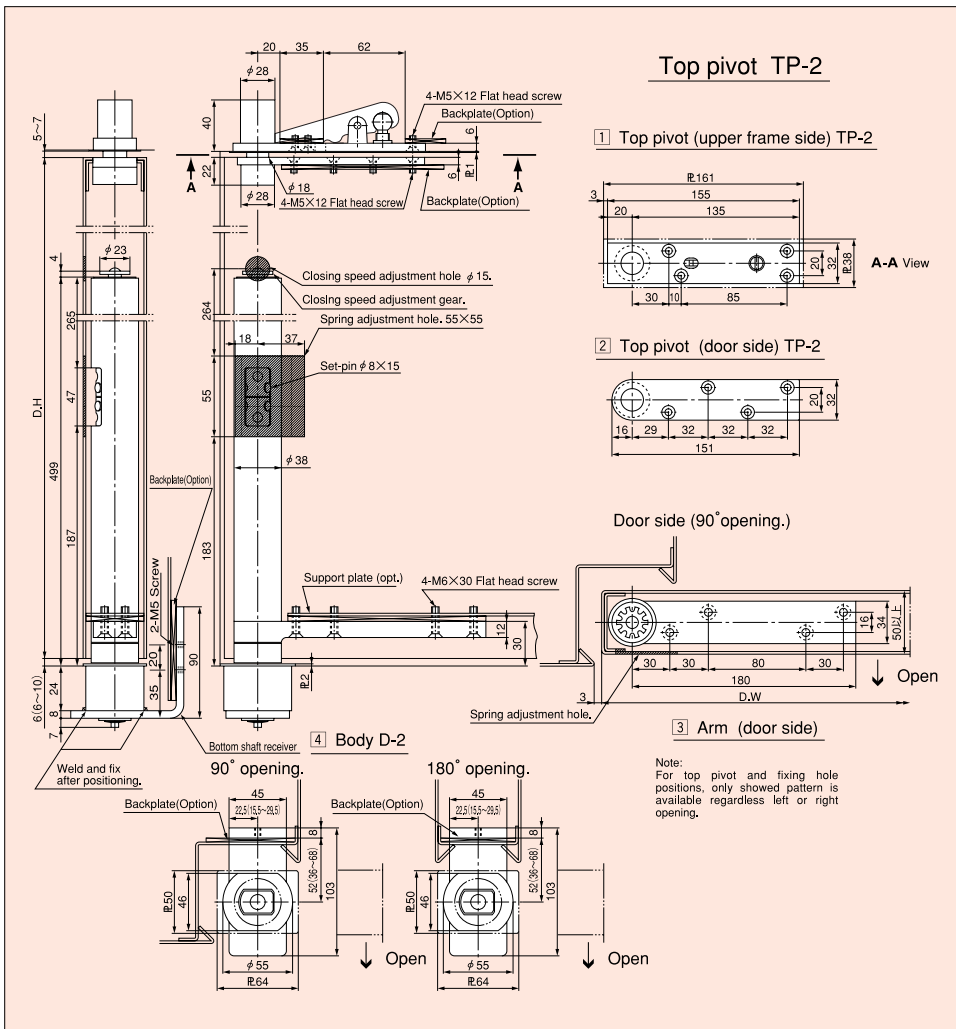
# AH-16



**Notes:**

1. Illustration refers to right opening.
2. Use plumb down from top pivot, and adjust center of the pivot seat sliding, and then weld securely.
3. Use standard supplied rubber caps to closing force and spring adjustment holes.
4. Door stop must be installed.
5. Pre-set installation also becomes possible after pivot seat has been welded.
6. Fix the round part of [4] pivot seat groove to hanging side.
7. Body [3] must be fastened with screws. Do not weld temporarily.

Number	Model	Maximum Door Width
AH-16L	CENTER HUNG	W=1600mm
AH-16R		H=2400mm D=45mm and above
Maximum Door Weight	Open	Hold open
160Kg	180° One side opening	—



# AH-18 AH-22

**Notes:**

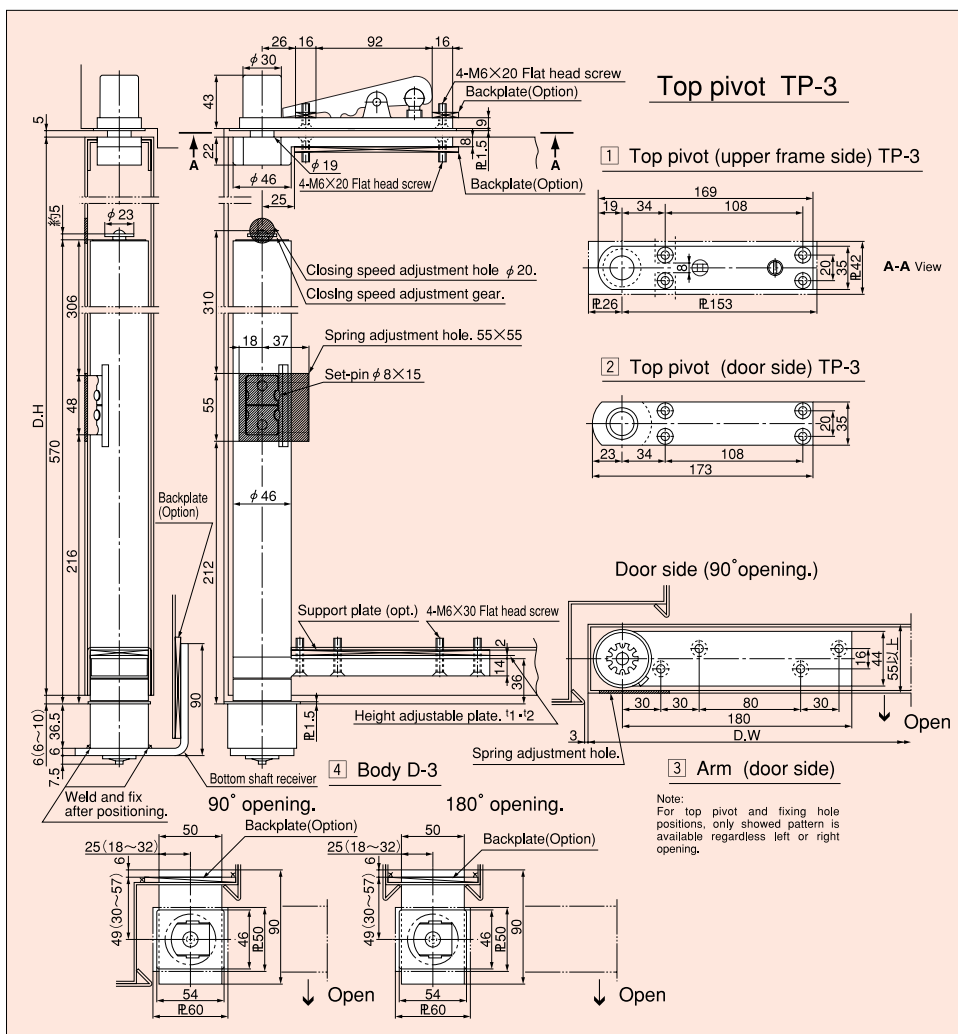
1. Illustration refers to right opening.
2. Use plumb down from top pivot, and adjust center of the pivot seat sliding, and then weld securely.
3. Use standard supplied rubber caps to closing force and spring adjustment holes.
4. Door stop must be installed.
5. Pre-set installation also becomes possible after pivot seat has been welded.
6. Fix the round part of [4] pivot seat groove to hanging side.
7. Body [3] must be fastened with screws. Do not weld temporarily.

Number	Model	Maximum Door Width
AH-18L	CENTER HUNG	W=1800mm
AH-18R		H=2400mm D=50mm and above
AH-22L	CENTER HUNG	W=2200mm
AH-22R		H=2400mm D=50mm and above
Maximum Door Weight	Open	Hold open
200Kg	180° One side opening	—
240Kg	180° One side opening	—

# AH-26

- Notes:
1. Illustration refers to right opening.
  2. Use plumb down from top pivot, and adjust center of the pivot seat sliding. and then weld securely.
  3. Use standard supplied rubber caps to closing force and spring adjustment holes.
  4. Door stop must be installed.
  5. Pre-set installation also becomes possible after pivot seat has been welded.
  6. Fix the round part of [4] pivot seat groove to hanging side.
  7. Body [3] must be fastened with screws. Do not weld temporarily.

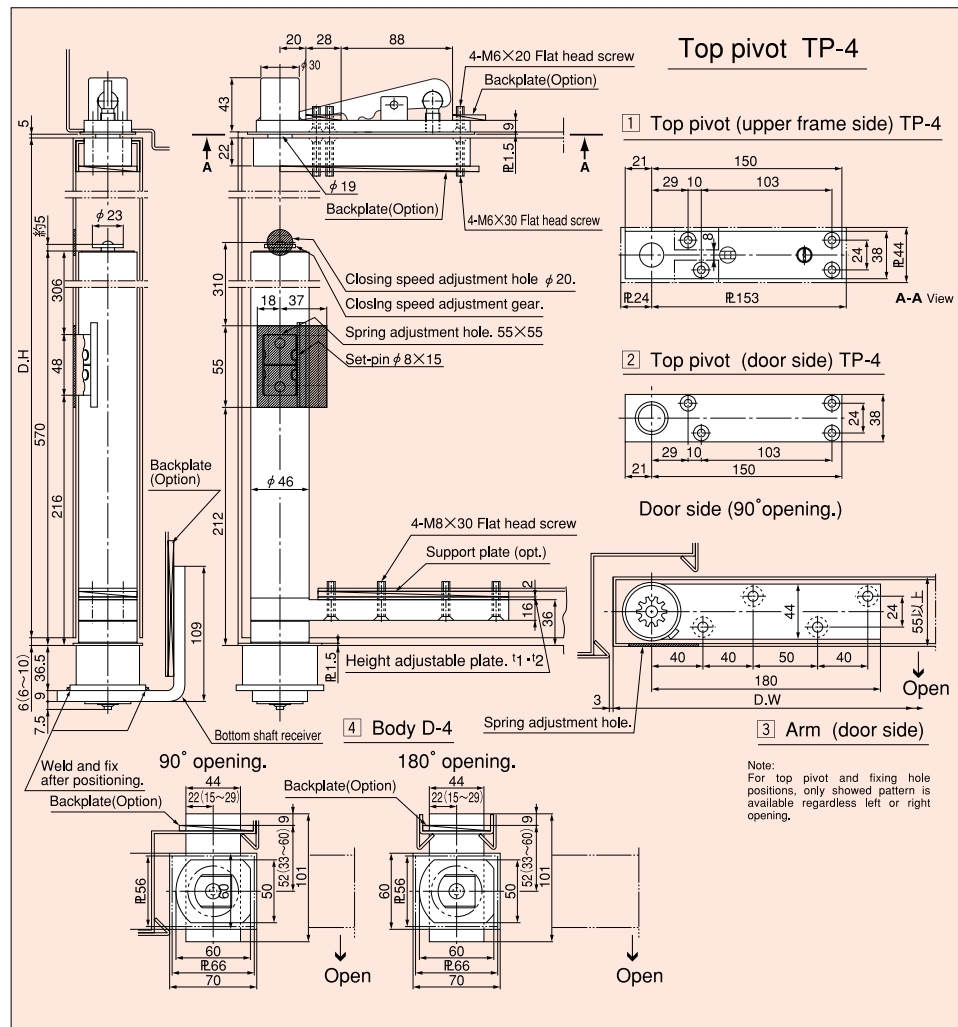
Number	Model	Maximum Door Width
AH-26L	CENTER HUNG	W=2600mm
AH-26R		H=2600mm
		D=55mm and above
Maximum Door Weight	Open	Hold open
310Kg	180° One side opening	—



# AH-30 AH-30H

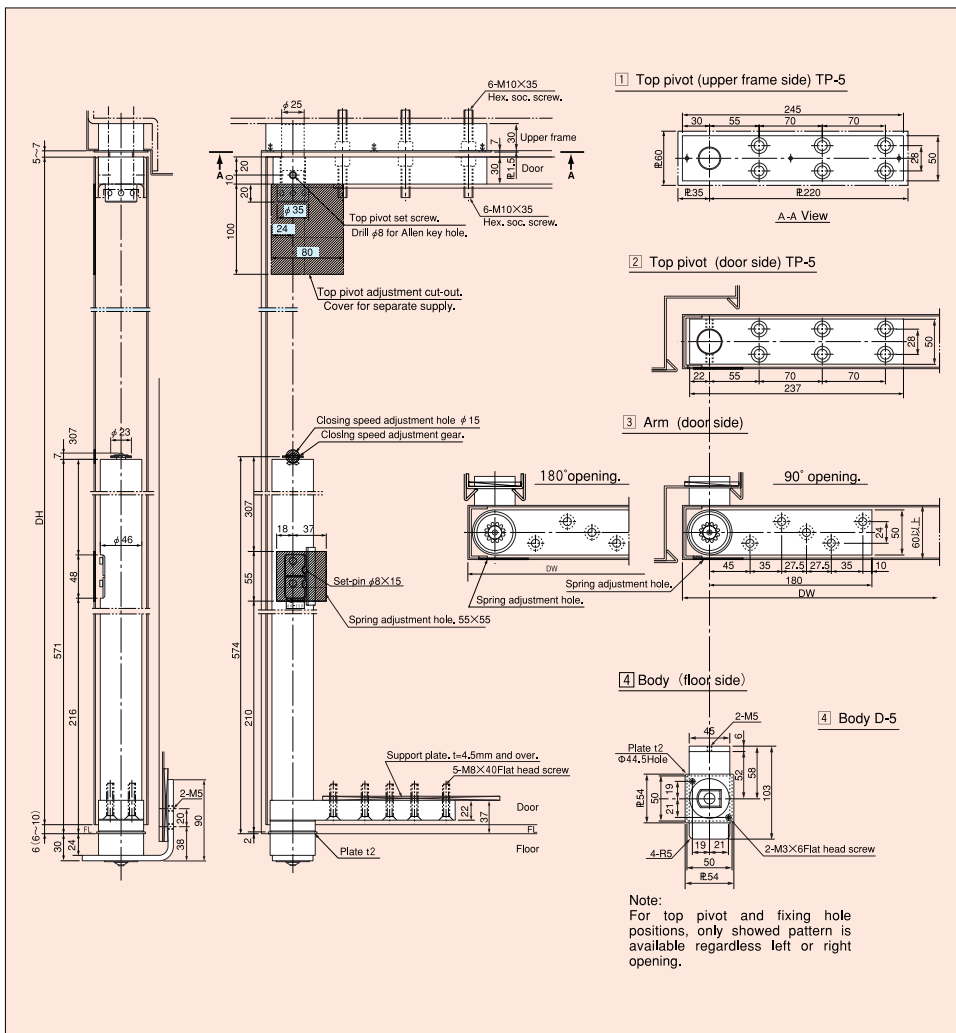
- Notes:
1. Illustration refers to right opening.
  2. Use plumb down from top pivot, and adjust center of the pivot seat sliding. and then weld securely.
  3. Use standard supplied rubber caps to closing force and spring adjustment holes.
  4. Door stop must be installed.
  5. Pre-set installation also becomes possible after pivot seat has been welded.
  6. Fix the round part of [4] pivot seat groove to hanging side.
  7. Body [3] must be fastened with screws. Do not weld temporarily.

Number	Model	Maximum Door Width
AH-30L	CENTER HUNG	W=3000mm
AH-30R		H=2600mm
		D=55mm and above
Maximum Door Weight	Open	Hold open
410Kg	180° One side opening	—
510Kg	180° One side opening	—





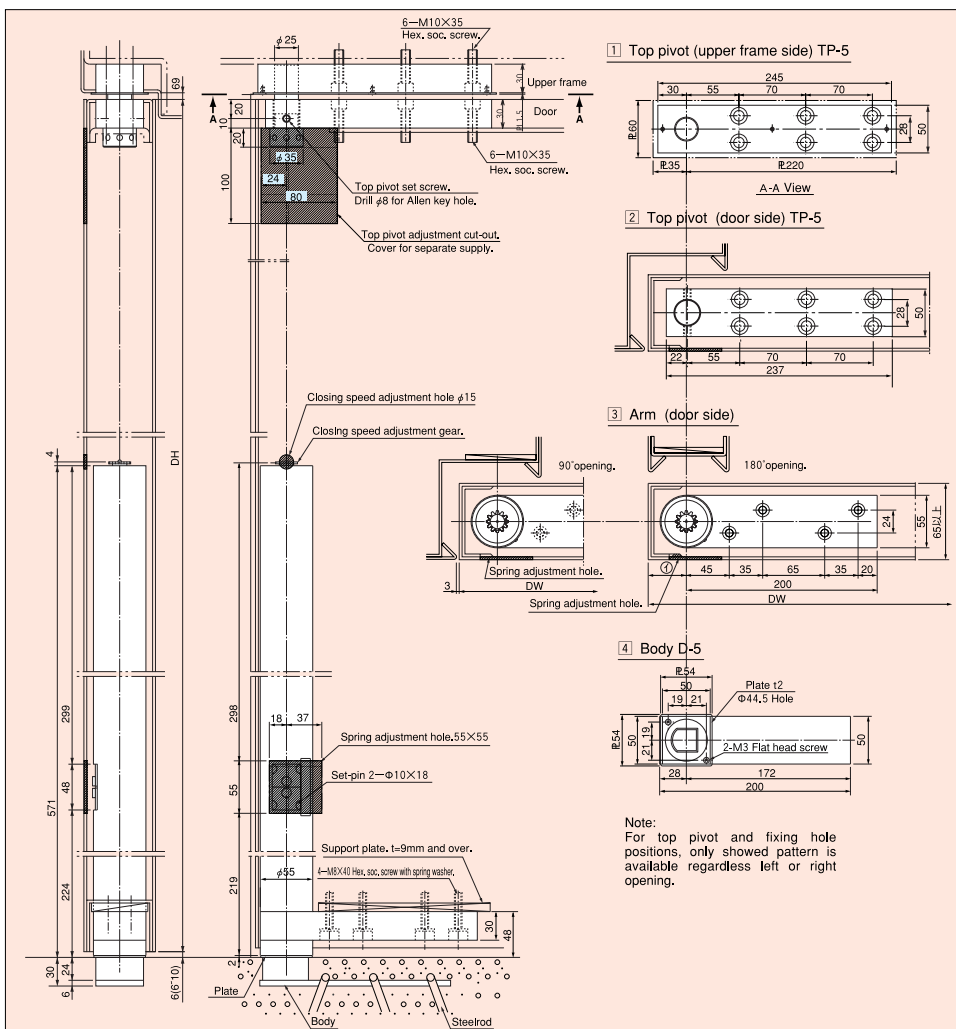
# AH-35



### Notes:

1. Illustration refers to right opening.
2. Use plumb down from top pivot, and adjust center of the pivot seat sliding, and then weld securely.
3. Use standard supplied rubber caps to closing force and spring adjustment holes.
4. Door stop must be installed.
5. Pre-set installation also becomes possible after pivot seat has been welded.
6. Fix the round part of [4] pivot seat groove to hanging side.
7. Body [3] must be fastened with screws. Do not weld temporarily.

Number	Model	Maximum Door Width
AH-35L	CENTER HUNG	W=3500mm
AH-35R		H=2800mm D=60mm and above
Maximum Door Weight	Open	Hold open
650Kg	180° One side opening	—



# AH-40

### Notes:

1. Illustration refers to right opening.
2. Use plumb down from top pivot, and adjust center of the pivot seat sliding, and then weld securely.
3. Use standard supplied rubber caps to closing force and spring adjustment holes.
4. Door stop must be installed.
5. Pre-set installation also becomes possible after pivot seat has been welded.
6. Fix the round part of [4] pivot seat groove to hanging side.
7. Body [3] must be fastened with screws. Do not weld temporarily.

Number	Model	Maximum Door Width
AH-40L	CENTER HUNG	W=4000mm
AH-40R		H=3000mm D=65mm and above
Maximum Door Weight	Open	Hold open
800Kg	180° One side opening	—

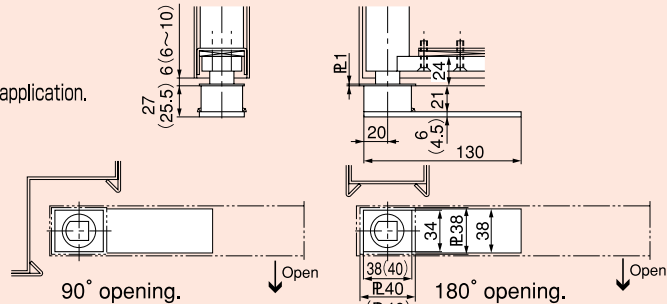
# AUTO HINGES

## CONCEALED type CENTER HUNG Single Action

### B-1Type

■ Illustrations refer to R/H application.

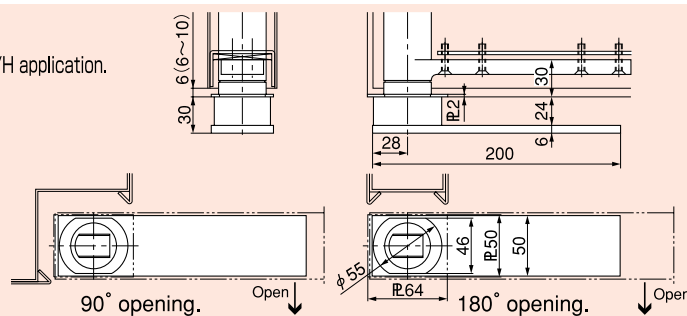
Applicable models:  
AH-8 · AH-10 · AH-14. For  
B-1A and AH-16, use dimensions  
quoted in parentheses.



### B-2Type

■ Illustrations refer to R/H application.

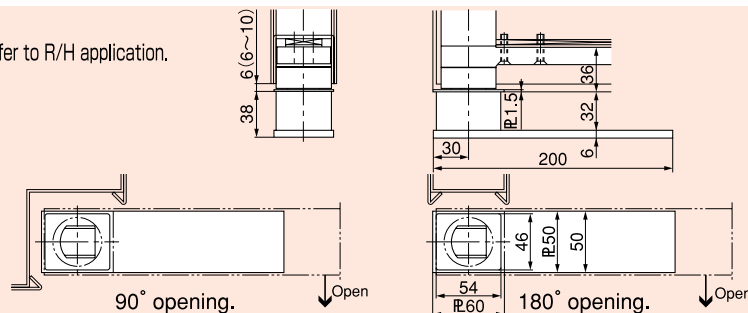
Applicable models:  
AH-18 · AH-22



### B-3Type

■ Illustrations refer to R/H application.

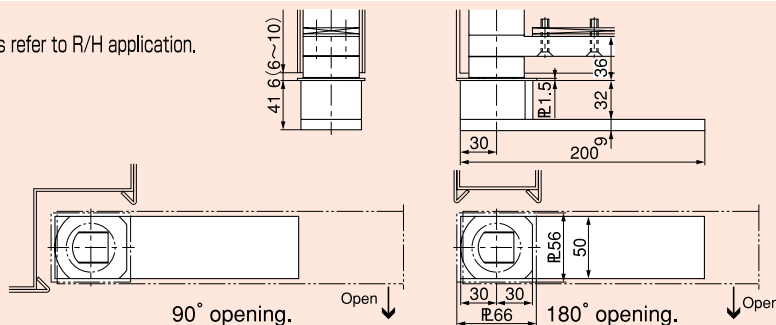
Applicable model:  
AH-26



### B-4Type

■ Illustrations refer to R/H application.

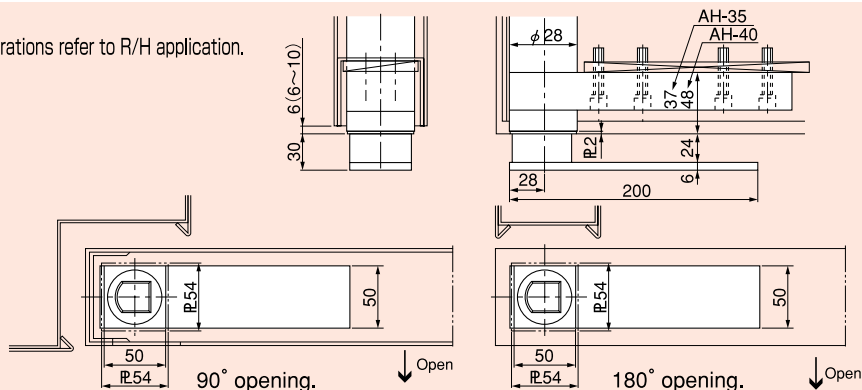
Applicable models:  
AH-30 · AH-30H



### B-5Type

■ Illustrations refer to R/H application.

Applicable models:  
AH-35 · AH-40



# DOOR SELECTORS

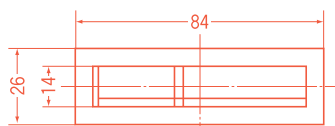
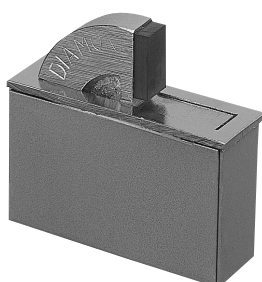


Model	Arm Length L (mm)	Second closing door (W)		First closing door (W)	
		Offset Hung	Center Hung	Offset Hung	Center Hung
DS-250	250	Below 1000	Below 1000	Below 1000	Below 1000
DS-350	350	1000~2000	1000~3000	1000~2000	1000~3000

# ROTARY DOOR STOPPERS

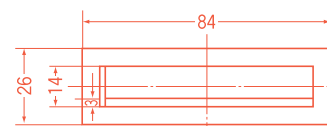
## VERTICAL TYPE

RT-35



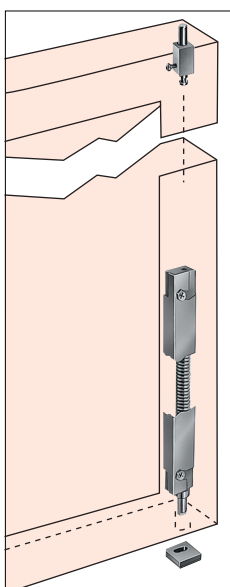
## HORIZONTAL TYPE

RY-35



# SPRING HINGES

For various inspection doors



- For one side opening use only.
- Weld to use.

### STANDARD

Model	MAXIMUM DOORS	
	WIDTH×HEIGHT(mm)	WEIGHT(kg)
TE-1N	450×1,000	10
TE-2N	600×1,200	16
TE-3N	750×1,800	25
TE-4N	850×2,000	30





# OHTORI KIKO CO.,LTD.

■ Head Office & Factory;  
19, Nanei-cho Tottori 689-1121, Japan.

Tel. 81-857-53-4611  
Fax. 81-857-53-4614  
E-mail:otr@bronze.ocn.ne.jp

■ Osaka Office  
1-7, 2-chome Kikawahigashi Yodogawa-ku Osaka 532-0012, Japan.

Tel. 81-6-6304-7676  
Fax. 81-6-6304-5455  
E-mail:otr-osaka@jeans.ocn.ne.jp

■ Tokyo Office  
2-17, 2-chome Sotokanda Chuyoda-ku Tokyo 101-0021, Japan.

Tel. 81-3-3255-7971  
Fax. 81-3-3255-7976  
E-mail:otrkyo@jeans.ocn.ne.jp

■ Branches  
Nagoya, Hiroshima, Fukuoka, Sendai